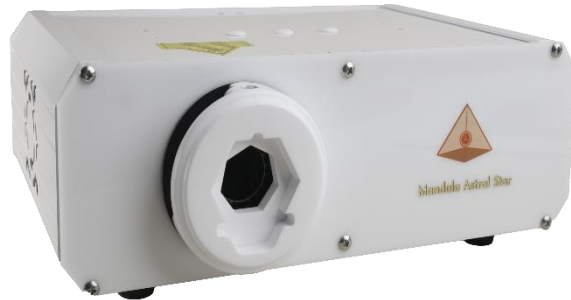


# Mandala Star App User Manual Mandala Astral Star



Please read the manual before using the tools.

**Version 2**

## Table of Contents

|              |   |           |
|--------------|---|-----------|
| <b>1</b>     | <b><i>Android Device Specification Requirement</i></b> .....      | <b>2</b>  |
| <b>2</b>     | <b><i>Mobile Application End-User License Agreement</i></b> ..... | <b>3</b>  |
| <b>3</b>     | <b><i>Application Download and Installation</i></b> .....         | <b>4</b>  |
| <b>4</b>     | <b><i>Mandala Star Application Main Page Features</i></b> .....   | <b>7</b>  |
| <b>4.1</b>   | <b><i>Basic Mode and Advance Mode</i></b> .....                   | <b>8</b>  |
| <b>5</b>     | <b><i>Application Setup</i></b> .....                             | <b>9</b>  |
| <b>5.1</b>   | <b><i>Application Activation</i></b> .....                        | <b>10</b> |
| <b>5.2</b>   | <b><i>Application Settings</i></b> .....                          | <b>11</b> |
| <b>5.2.1</b> | <b><i>Bluetooth Connection Setup:</i></b> .....                   | <b>11</b> |
| <b>5.2.2</b> | <b><i>General Setting</i></b> .....                               | <b>12</b> |
| <b>5.2.3</b> | <b><i>Mandala Dynamic Scan Setting</i></b> .....                  | <b>13</b> |
| <b>5.2.4</b> | <b><i>Light Alchemy Pulsar Setting</i></b> .....                  | <b>13</b> |
| <b>6</b>     | <b><i>Mandala Astral Star</i></b> .....                           | <b>14</b> |
| <b>6.1</b>   | <b><i>Library</i></b> .....                                       | <b>14</b> |
| <b>6.1.1</b> | <b><i>Pattern/item Laser Light Color Selection</i></b> .....      | <b>16</b> |
| <b>6.2</b>   | <b><i>Preset</i></b> .....  | <b>16</b> |
| <b>6.2.1</b> | <b><i>Basic Preset</i></b> .....                                  | <b>17</b> |
| <b>6.2.2</b> | <b><i>Create Preset</i></b> .....                                 | <b>19</b> |
| <b>6.2.3</b> | <b><i>Preset Play Mode</i></b> .....                              | <b>21</b> |
| <b>6.3</b>   | <b><i>Pre Scan</i></b> .....                                      | <b>23</b> |
| <b>6.4</b>   | <b><i>Scan</i></b> .....  | <b>24</b> |
| <b>6.4.1</b> | <b><i>Select Scan</i></b> .....                                   | <b>24</b> |
| <b>6.4.2</b> | <b><i>Integrated Scan</i></b> .....                               | <b>25</b> |
| <b>6.5</b>   | <b><i>Public Presets</i></b> .....                                | <b>26</b> |
| <b>6.5.1</b> | <b><i>Upload Preset</i></b> .....                                 | <b>26</b> |

## 1 Android Device Specification Requirement

Mandala Star application can only be operated with **Android mobile phone or tablet.**

### Minimum requirement:

**Operating System:** Android OS

**Android version:** Android 12 or above

**Others:** Bluetooth WIFI function and Open location



## 2 Mobile Application End-User License Agreement

Please read this Mobile Application End-User License Agreement (“EULA”) carefully before downloading or using the Mandala Star App mobile application (“the application”). This EULA governs your use of the application, which will allow you to access Light Mandalas library and control Light Mandalas tools by your mobile device. Your use of the application indicates your consent to this EULA.

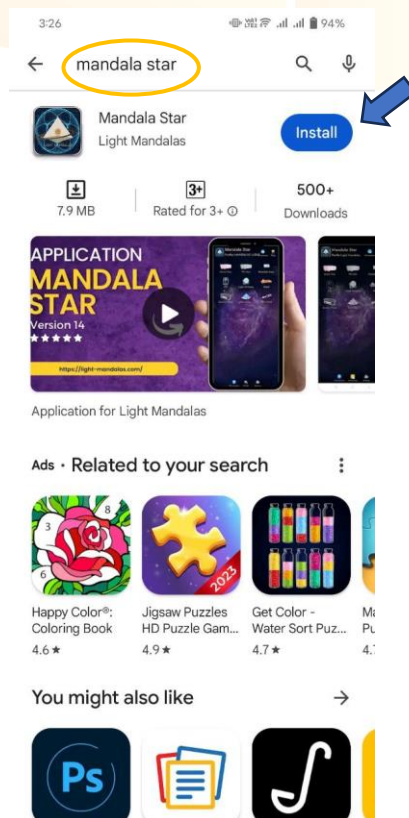
- 1. License.** Light Mandalas Co., Ltd. grants you a revocable, non-exclusive, non-transferable, limited license to download, install, and use the application for your personal and internal business purposes strictly in accordance with this EULA
- 2. Your Account.** Your use of the application requires that you have an account with Light Mandalas.
- 3. Changes to this EULA.** Light Mandalas reserves the right to modify this EULA. Your continued use of the application after Light Mandalas publishes notice of changes to this EULA indicates your consent to the updated terms.
- 4. No Included Maintenance and Support.** Light Mandalas may deploy changes, updates, or enhancements to the application at any time. Light Mandalas may provide maintenance and support for the application but has no obligation whatsoever to furnish such services to you and may terminate such services at any time without notice. You acknowledge that Google has an obligation to furnish any maintenance and/or support services in connection with the application.
- 5. Acceptable Use.** You agree that you will not use or encourage others to use the application in a way that could harm or impair others’ use of the Mobile App.
- 6. Privacy.** Light Mandalas don’t collect your information from your application. Information inside the application will be private.
- 7. No Warranty.** Your use of the application is at your sole risk. The application is provided on an “As Is” and “As Available” basis. Light Mandalas expressly disclaims all warranties of any kind.
- 8. Suspension and Termination of the application.** Light Mandalas reserves the right to suspend or terminate your access to the application at any time.
- 9. Intellectual Property Rights.** In the event of a third-party claim that the application, or your possession and use of the application, infringes third party’s intellectual property rights, Light Mandalas, will be solely responsible for the investigation, defense, settlement and discharge of any such intellectual property infringement claim.

### 3 Application Download and Installation

1. Users can download Mandala Star app from **Google Play Store**.



2. In “**Google Play Store**” try to search “**Mandala Star**”, and click to install the APP.

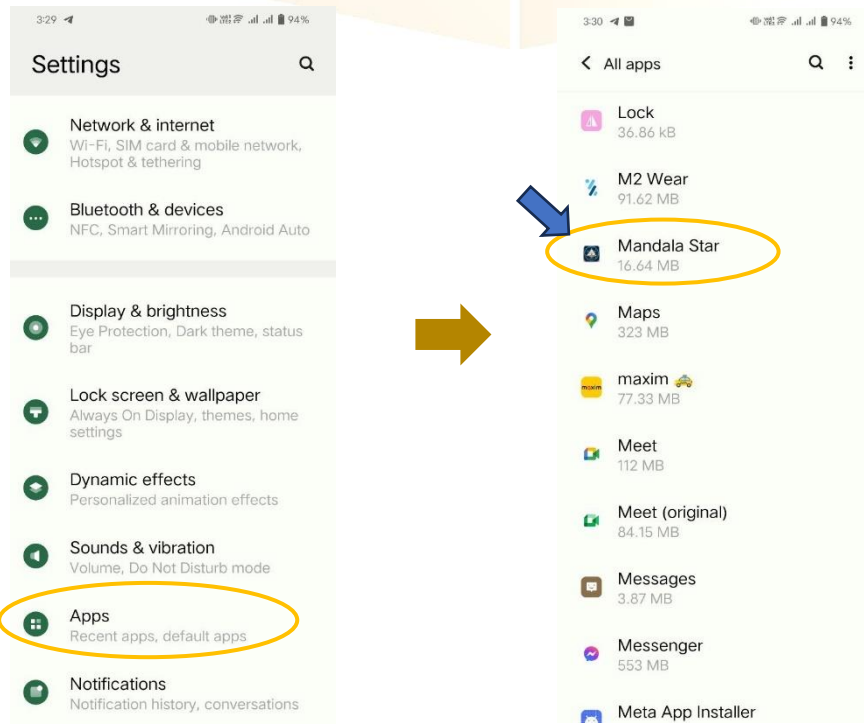


### 3. Allow permissions for Mandala Star APP

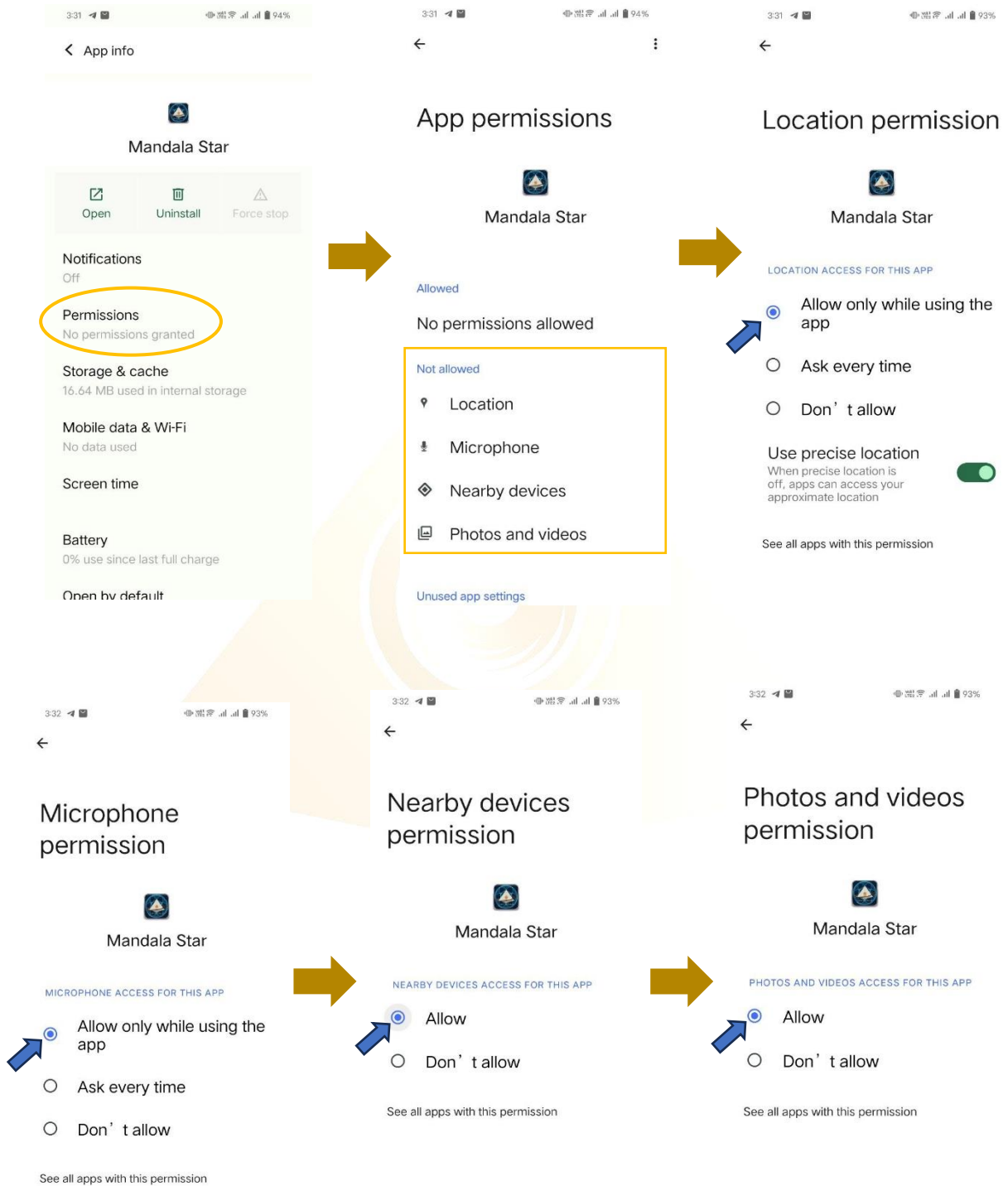
#### a. Go to Tablet Settings



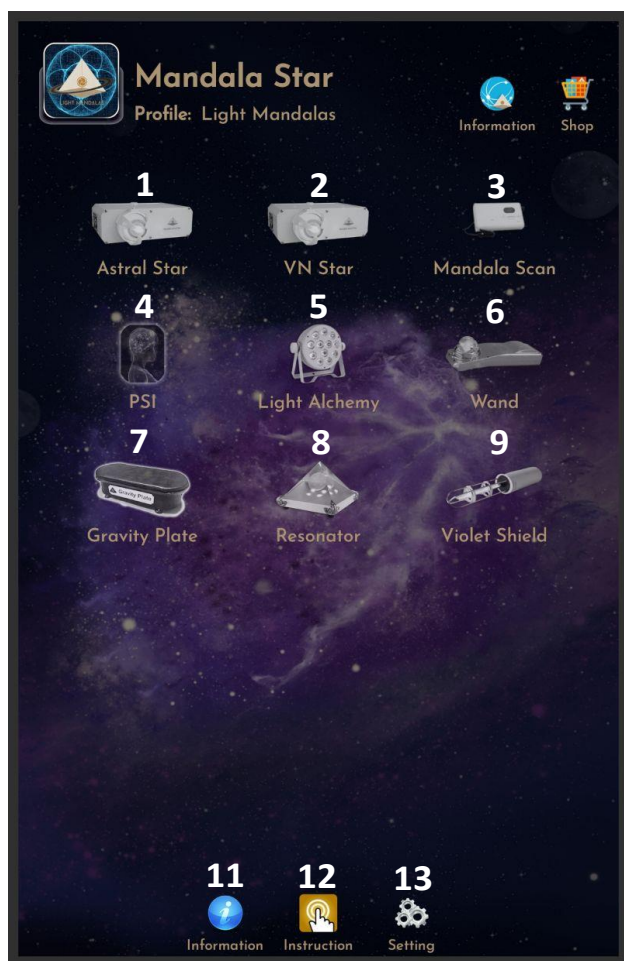
#### b. Go to “Apps” in the setting.



c. Tap on “Permissions” and click allow permission in each of function.



## 4 Mandala Star Application Main Page Features



Programs 1 to 9 on Light Mandalas devices correspond to specific functions, allowing users to select the appropriate program for their desired operation.

1. **Mandala Astral Star**
2. **Mandala VN Star**
3. **Mandala Scan**
4. **Psycho Spiritual Integration – PSI**
  - PSI library has to be purchased prior to use this program.
  - Must use with Mandala Scan.
5. **Mandala Light Alchemy Pulsar**
6. **Mandala Wand**
7. **Gravity Plate**
8. **Mandala Resonator**
9. **Mandala Violet Shield**

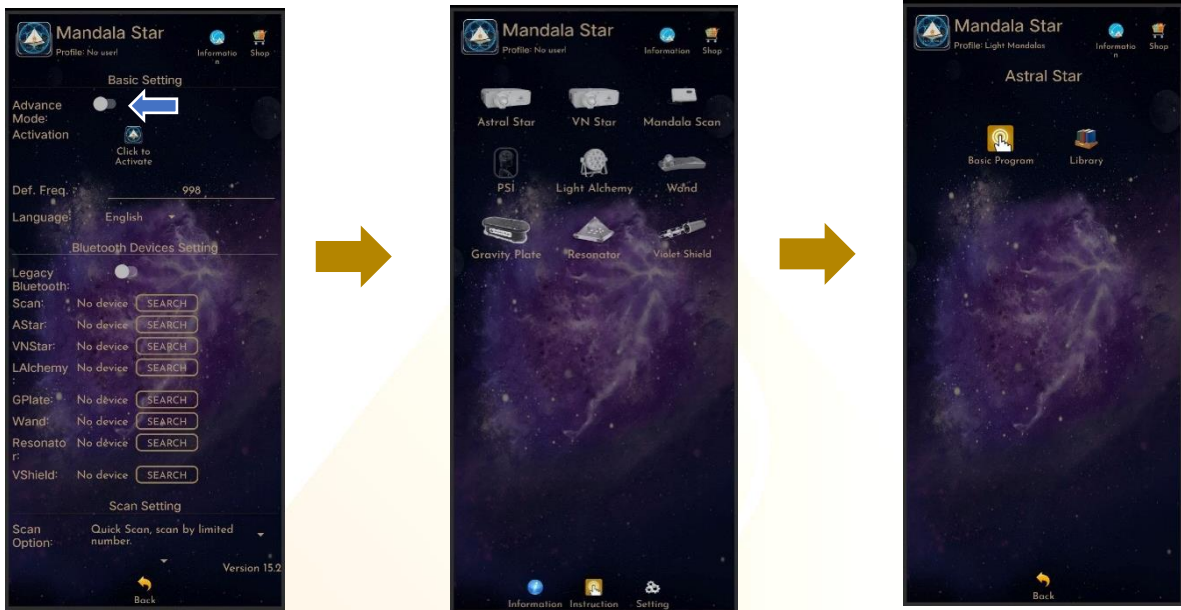
- 11. Information:** Provide the user with the latest application update information.
- 12. Instruction:** Provide video manuals for the user.
- 13. Setting:** Application Setting – Bluetooth Pairing, Mandala Scan Setting, Light Alchemy Setting, Language setting, Database refresh and Activation Code Release



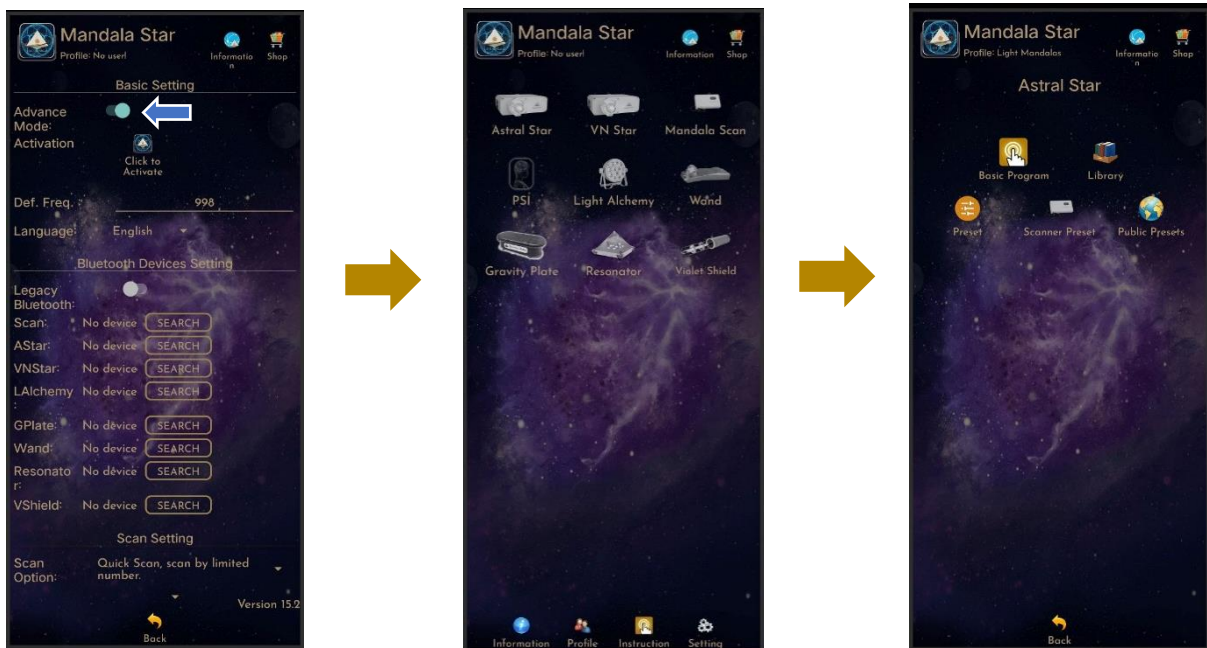
## 4.1 Basic Mode and Advance Mode

Users can select Basic Mode and Advance Mode from the APP setting. Basic Mode allows the beginner to use the basic programs and enjoys the basic healing. In Advance Mode, users can customize the frequency on their own and enjoys other features with the healing programs.

### a. Basic Mode



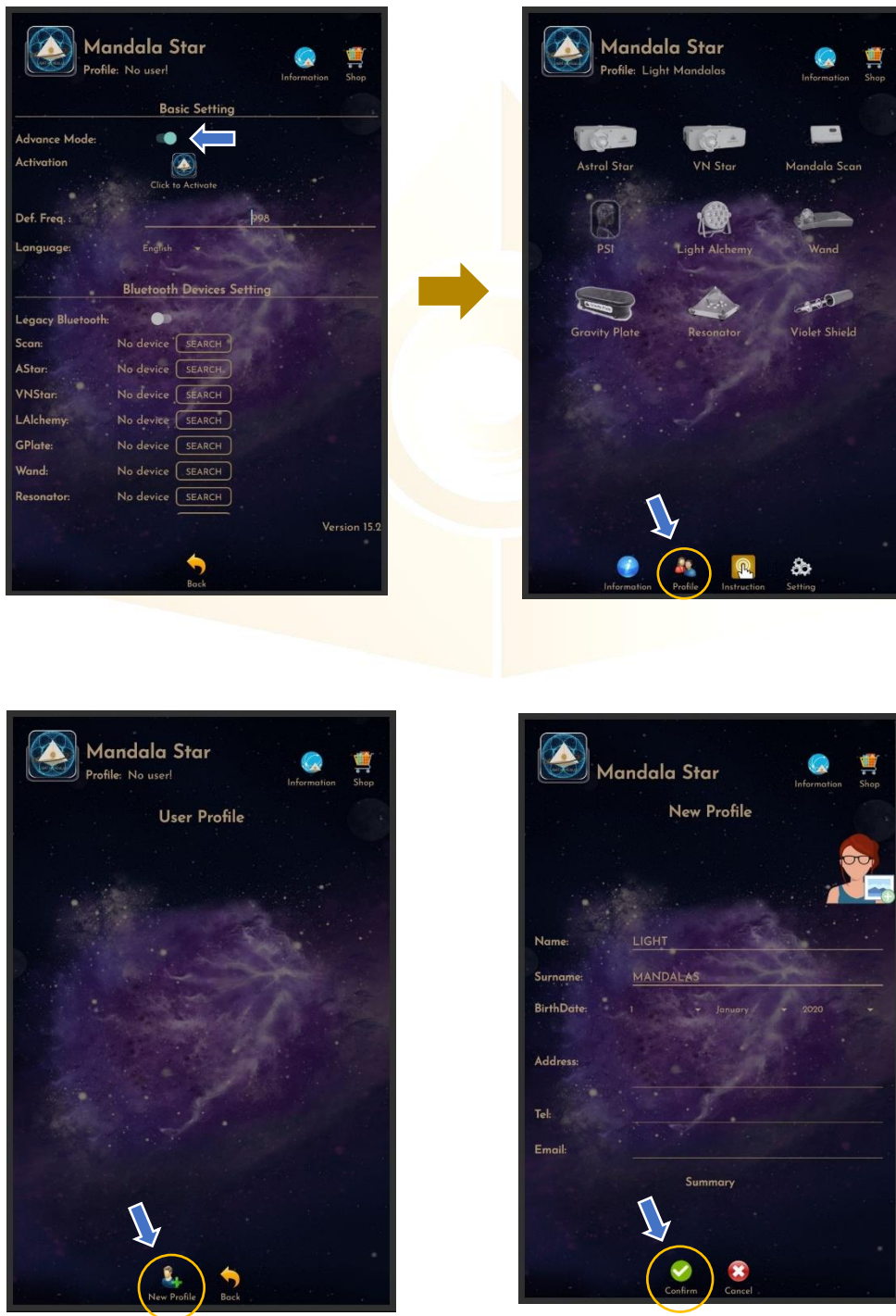
### b. Advance Mode



## 5 Application Setup

Once the user turns on Advance Mode from the APP setting, “User Profile” will prompt up on the Home Page to add new user profile and it can add the picture profile as well. The user’s name will appear on the Home Page.

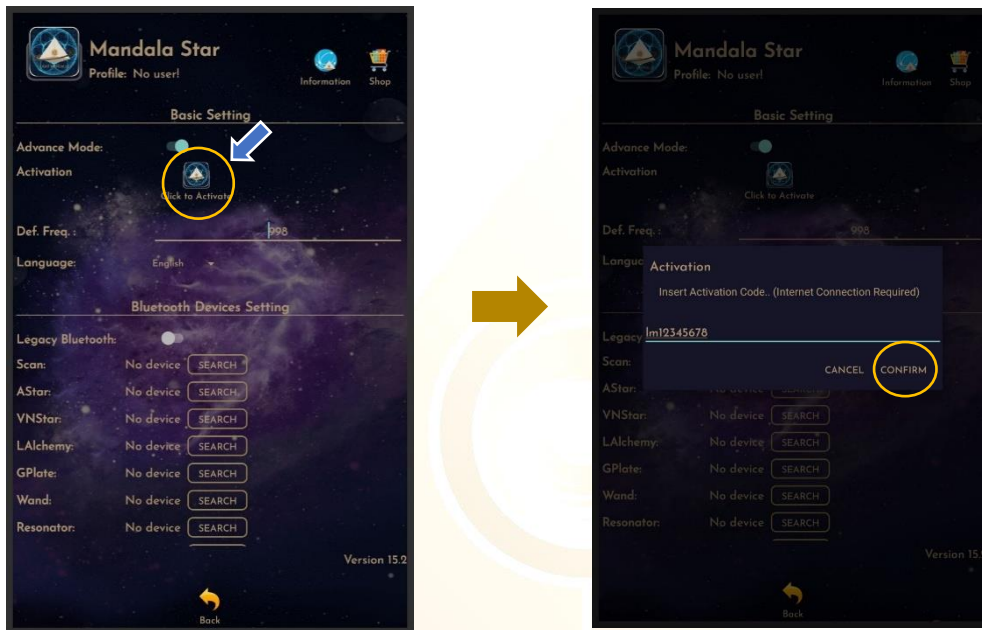
Users can add more another user by tapping on “User Profile” to insert other users’ information.



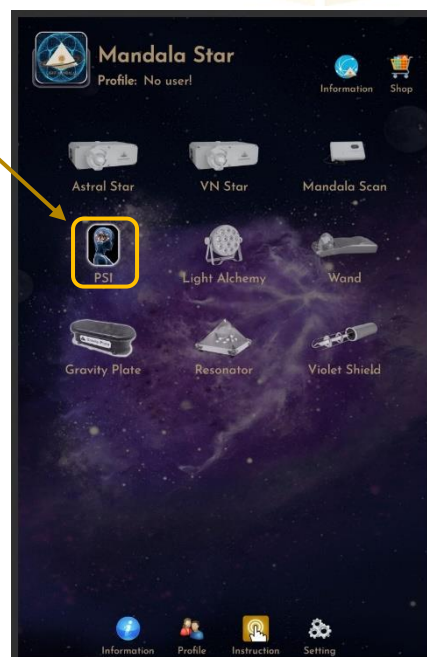
## 5.1 Application Activation

Users have to tap on the icon “Click to Activate” to activate the APP and use the programs. Insert the activation code with small letter of “lm” and tap confirm.

***\*User has to purchase for the libraries and can request activation code from the dealer/local agent.***



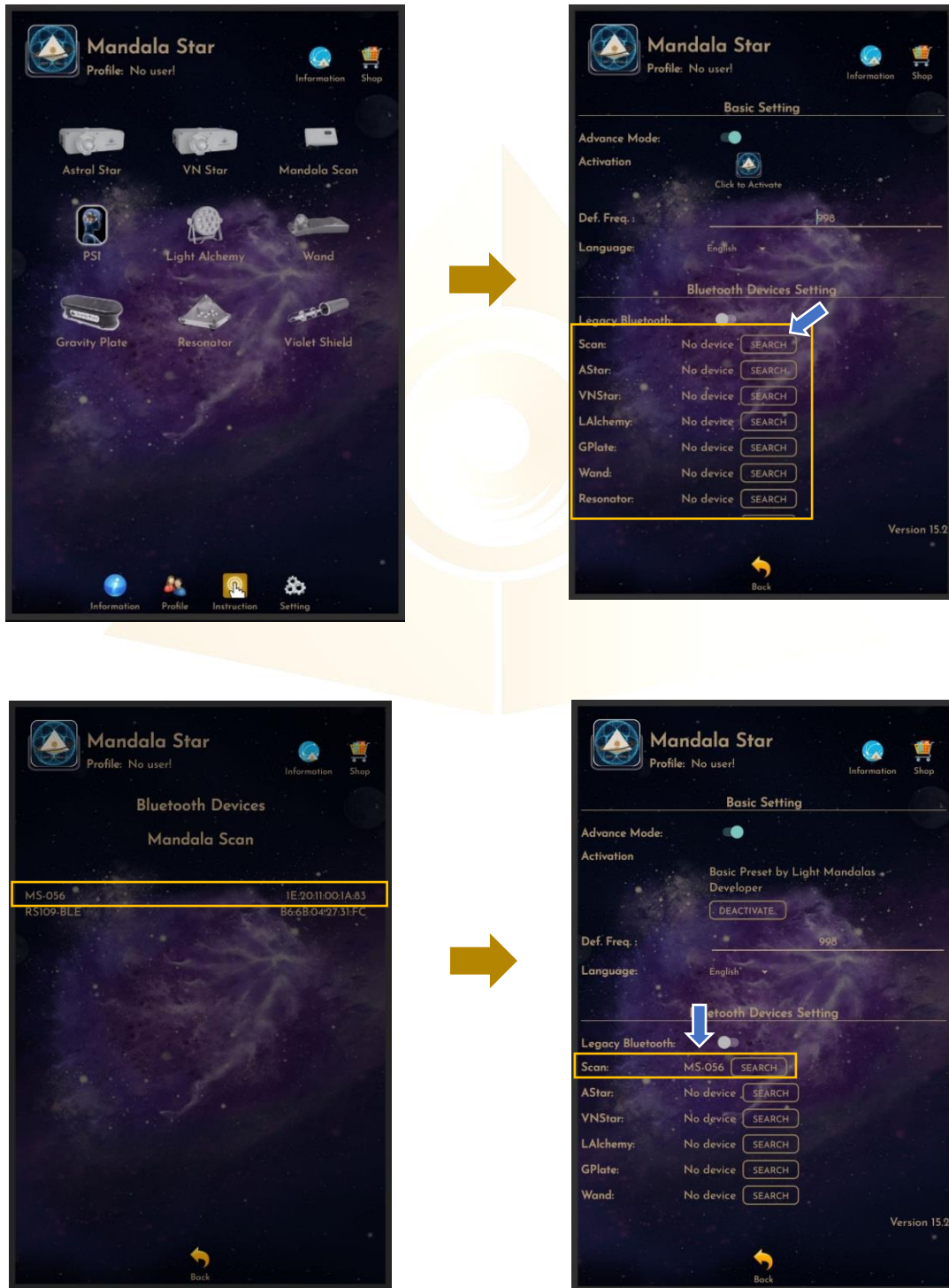
The PSI icon will turn to color if the customer has purchased the PSI library.



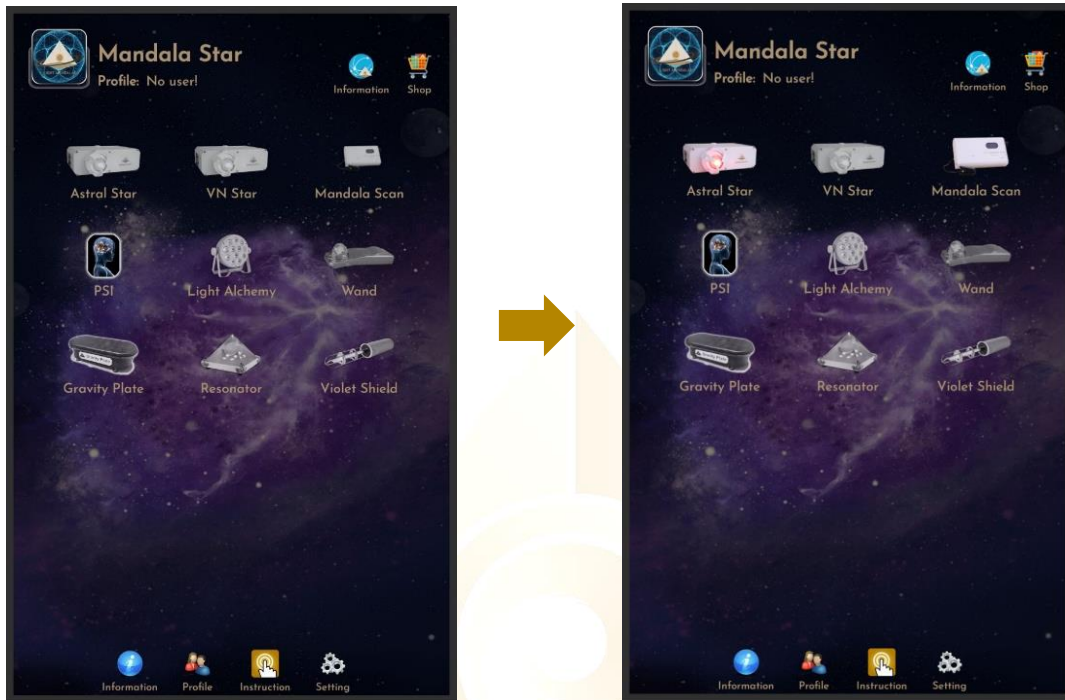
## 5.2 Application Settings

### 5.2.1 Bluetooth Connection Setup:

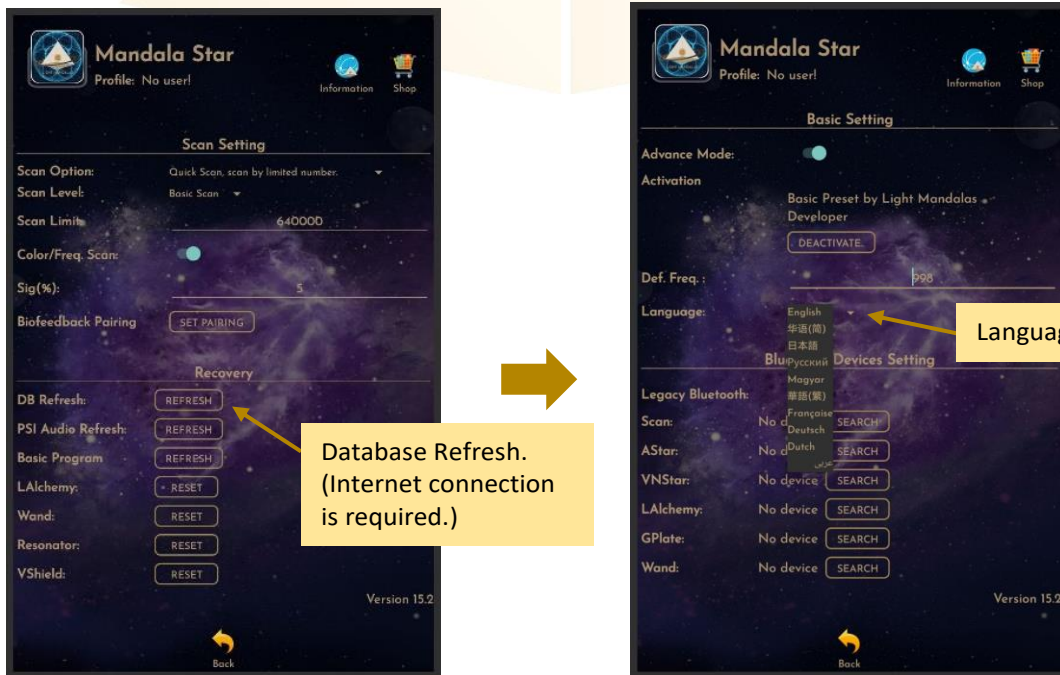
1. Go to the Mandala Star application “**Setting**”, tab on the device which you want to pair with and click “**Search**” to pair Bluetooth with Light Mandalas device.



- The icon of the device on the Home Page will turn to color when APP is pairing Bluetooth with Light Mandals devices.



### 5.2.2 General Setting



### 5.2.3 Mandala Dynamic Scan Setting

**Scan Level:**

1. Basic Scan: scan from Blue to Green state.
2. Deep Scan: will scan only on green state.

**Scan Option:**

1. Quick Scan: scan by limited number
2. Advance Scan and Bio Matrix Scan: scan by human body coherence. (Unlimited number of scan)

**Color/Freq. Scan:**

**Color Scan for Astral Star and VN Star:**

Turn on: different colors preset scan results.  
Turn off: white color preset scan results.

**Freq. Scan for Light Alchemy Pulsar:**

Turn on: different frequency preset scan results.  
Turn off: default frequency preset scan results.

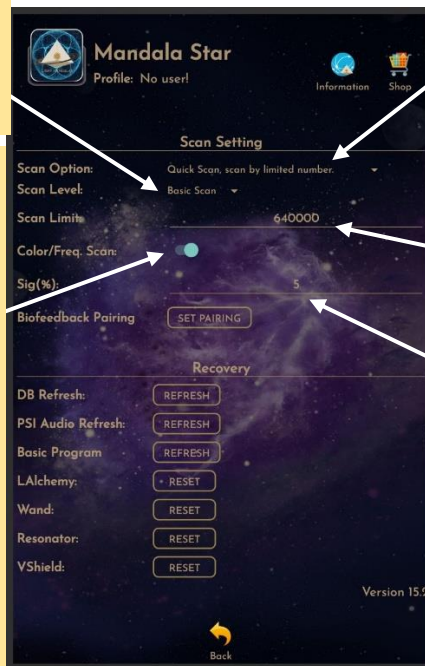
**Freq. Scan for Mandala Wand:**

Turn on: different color preset and laser scan results.  
Turn off: no color preset and all laser ON (FULL) scan results.

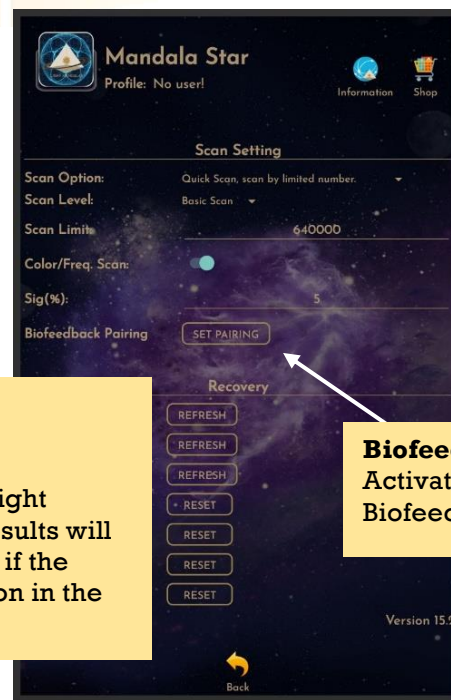
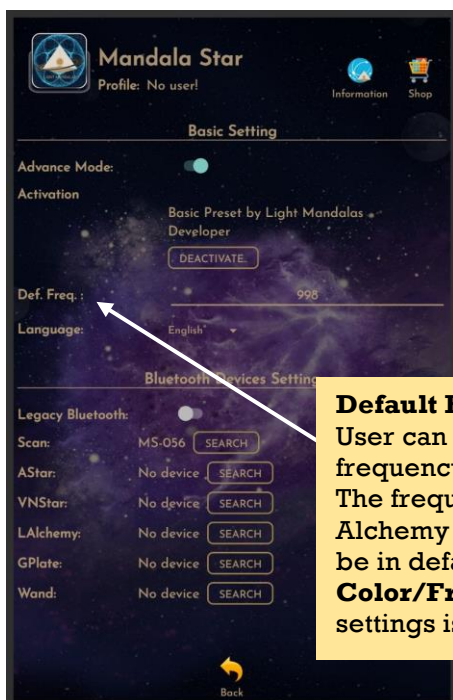
**Scan Limit:**

Set the scan numbers for Quick Scan.

**Sig. (%):** the significant of the scan result that focus on.



### 5.2.4 Light Alchemy Pulsar Setting

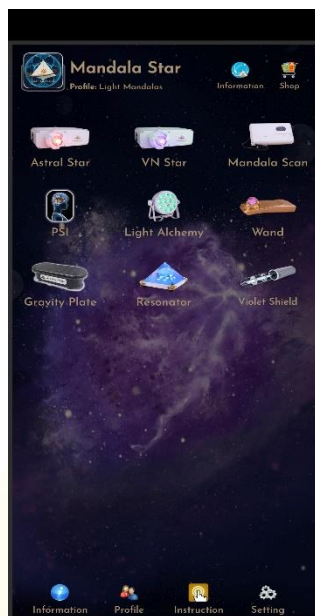


**Default Frequency:**  
User can set the default frequency at here. The frequency for the Light Alchemy Pulsar Scan results will be in default frequency if the **Color/Freq. Scan** option in the settings is unticked.

**Biofeedback Pairing:**  
Activate and deactivate Biofeedback function.

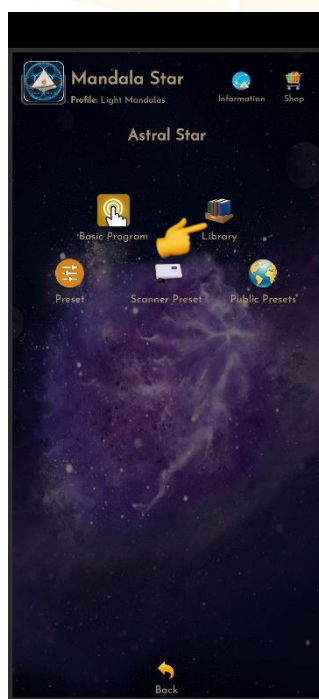
## 6 Mandala Astral Star

Tap on the **Mandala Astral Star** icon in the **Mandala Star Application Home Page** then you will go to **Mandala Astral Star Home Page**.



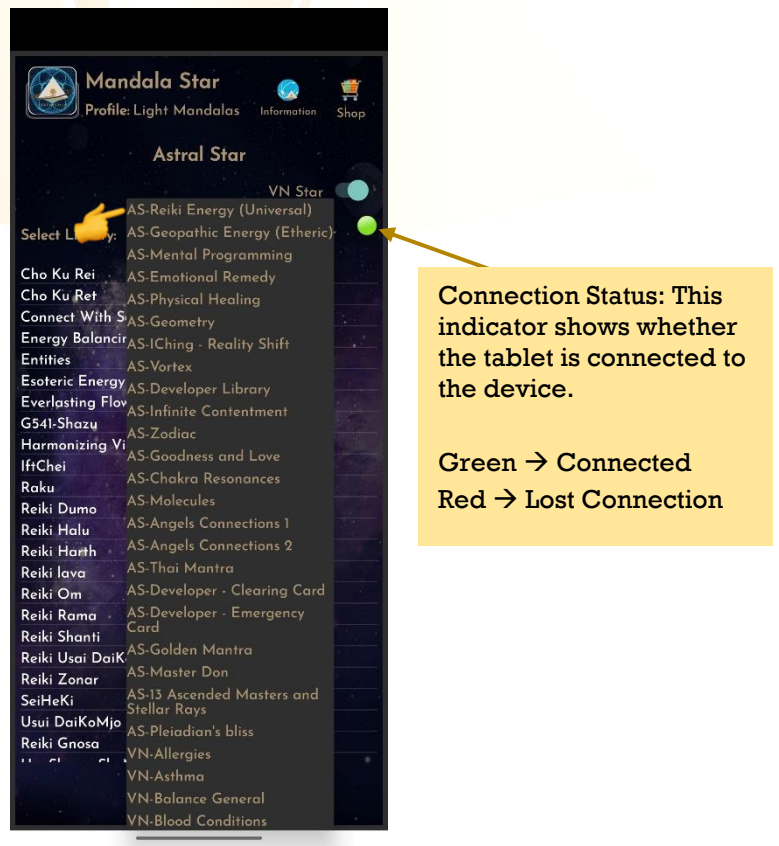
### 6.1 Library

To play the pattern directly from the library, tap on any of the libraries and choose the pattern you wish to play.



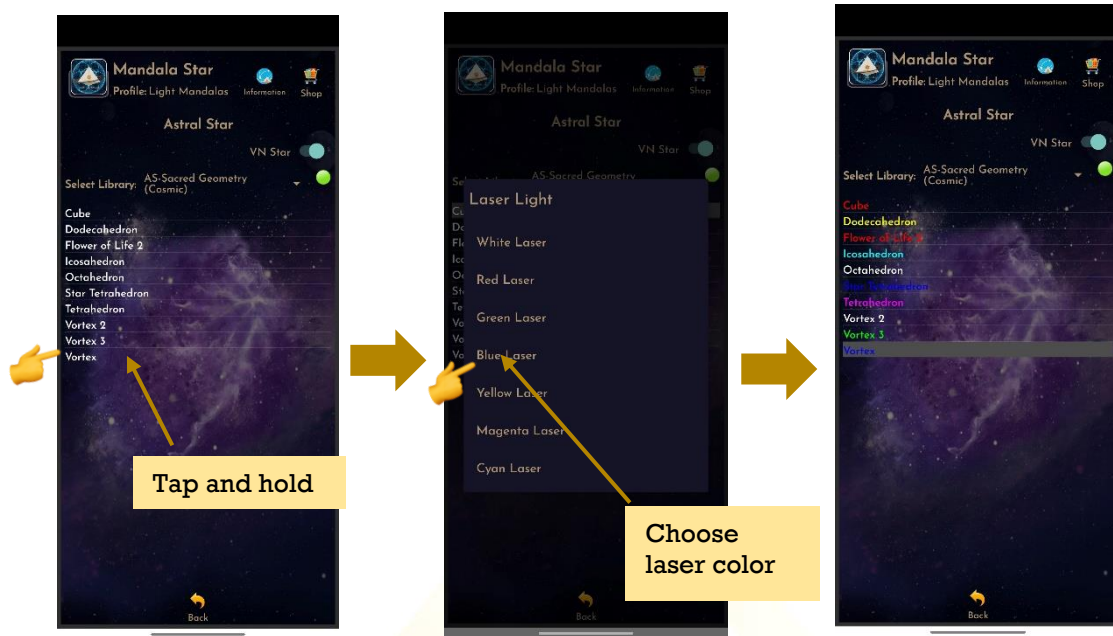


User can switch to different libraries from the **Select Library** drop list.



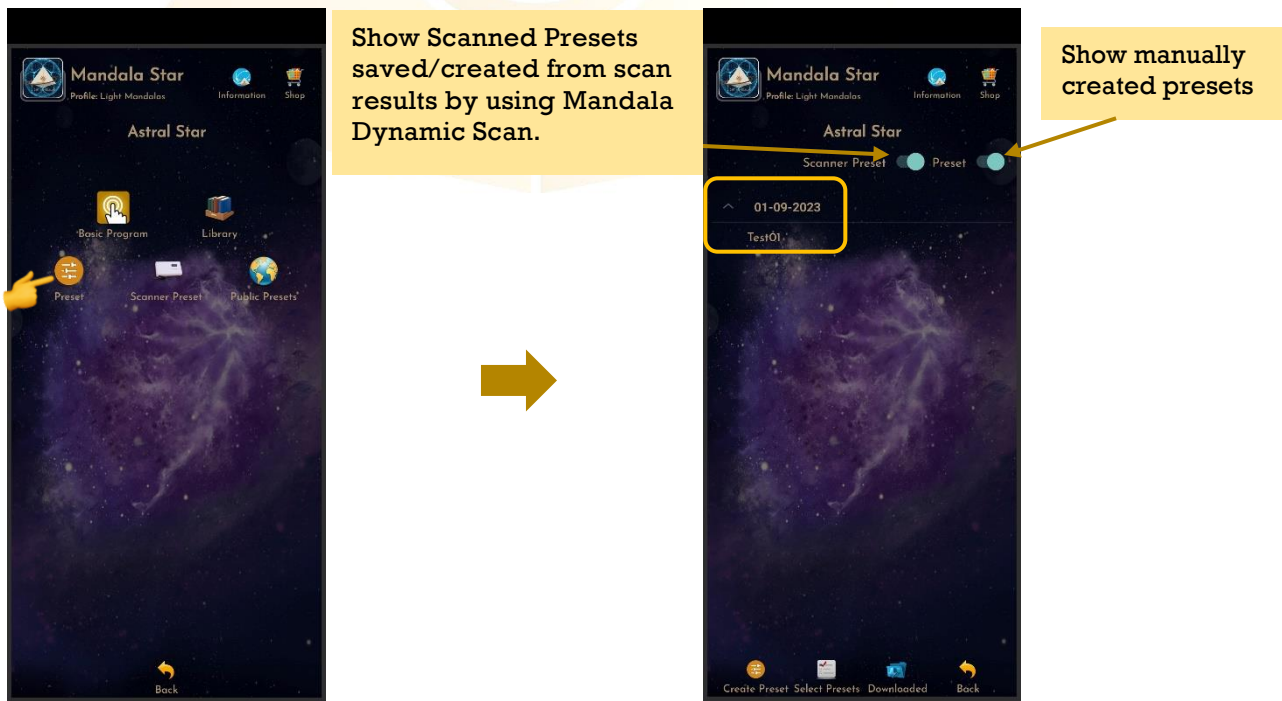


### 6.1.1 Pattern/item Laser Light Color Selection



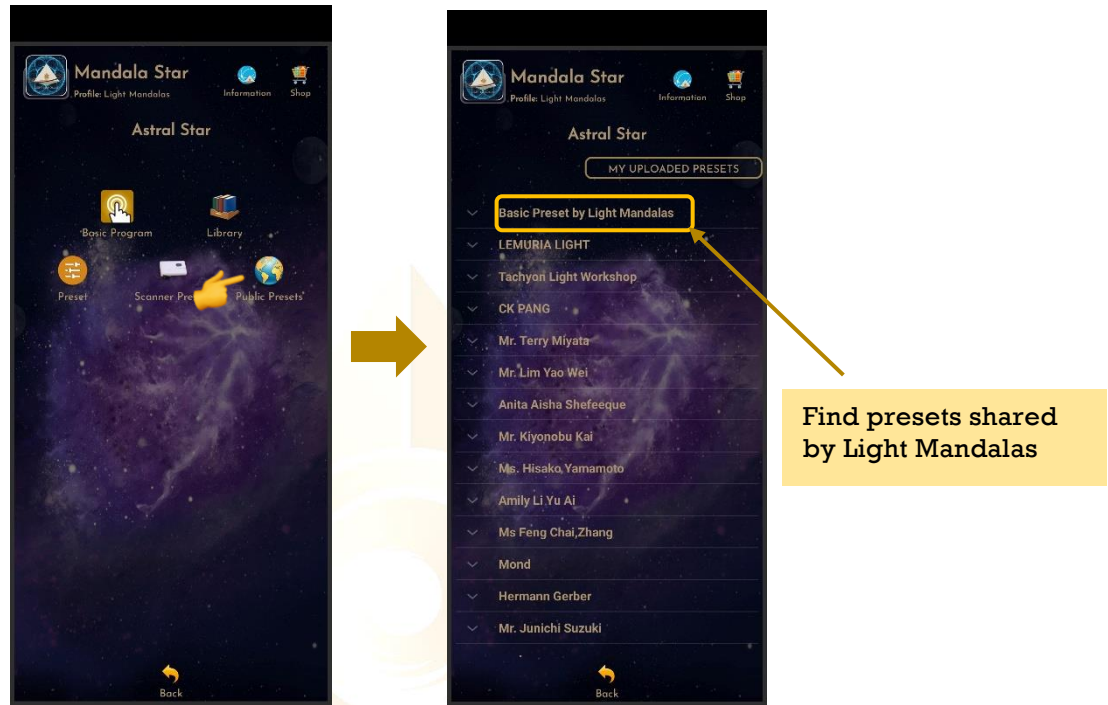
### 6.2 Preset

Tap on Preset and it will bring you to Preset Home Page.

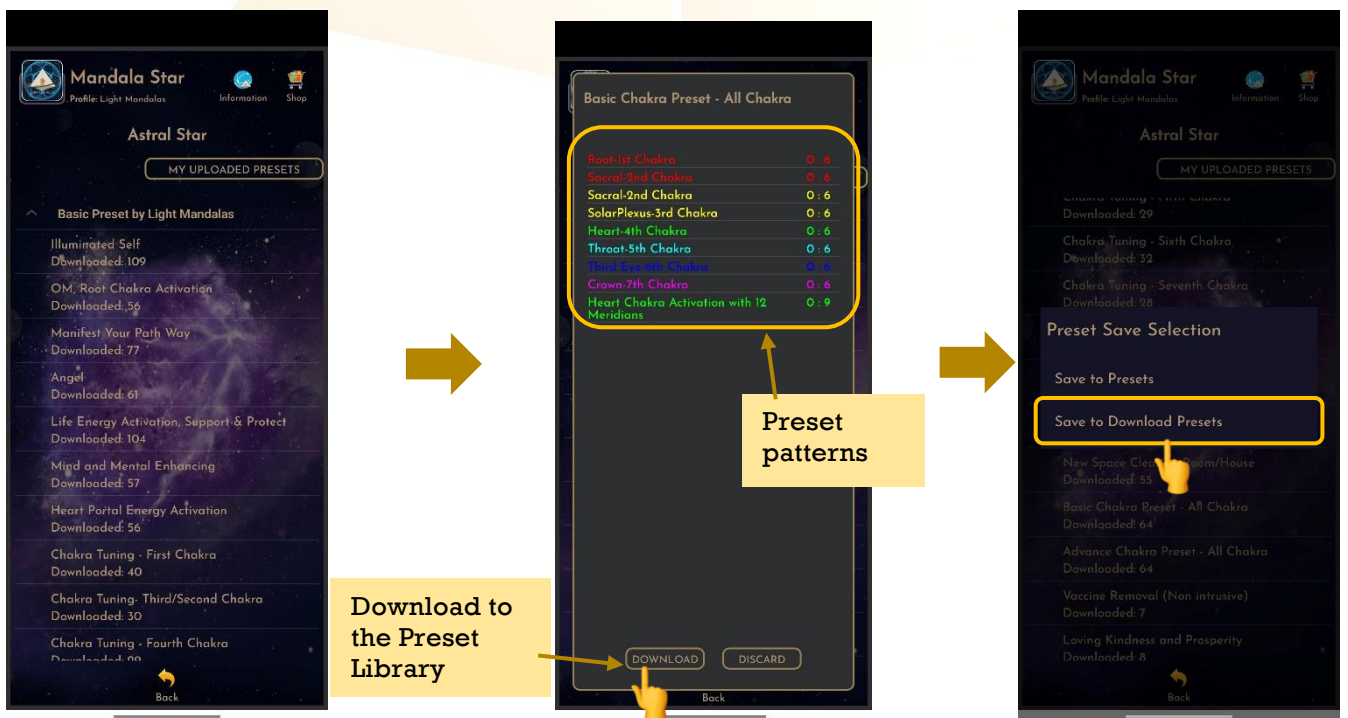


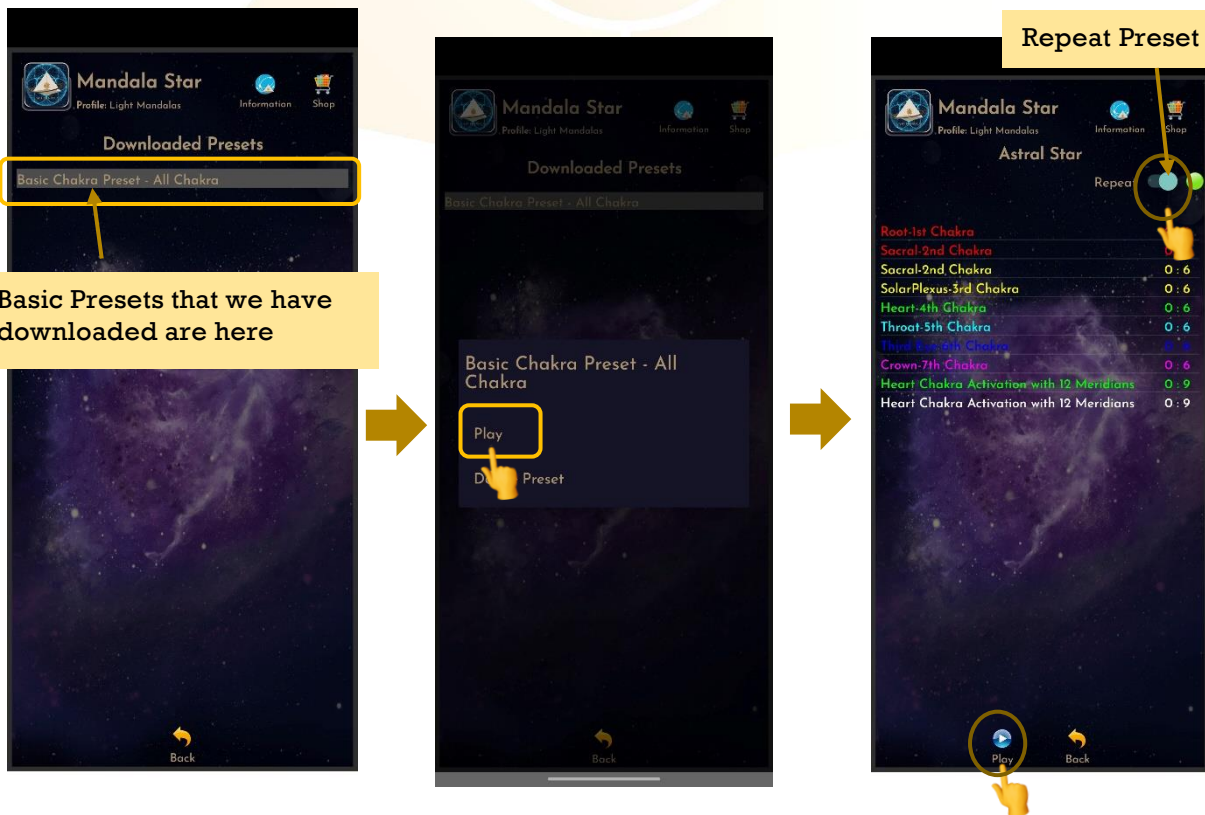
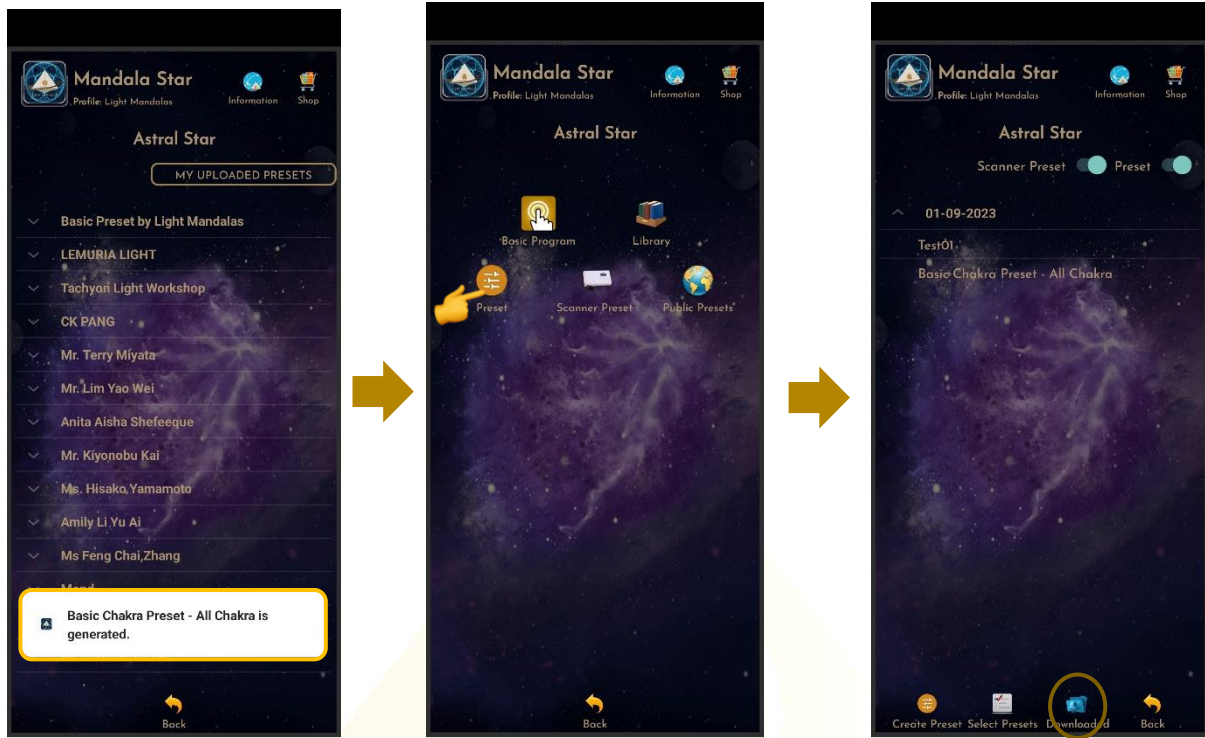
### 6.2.1 Basic Preset

Users can choose to play **Basic Presets** created and shared by Light Mandalas team in this mode.



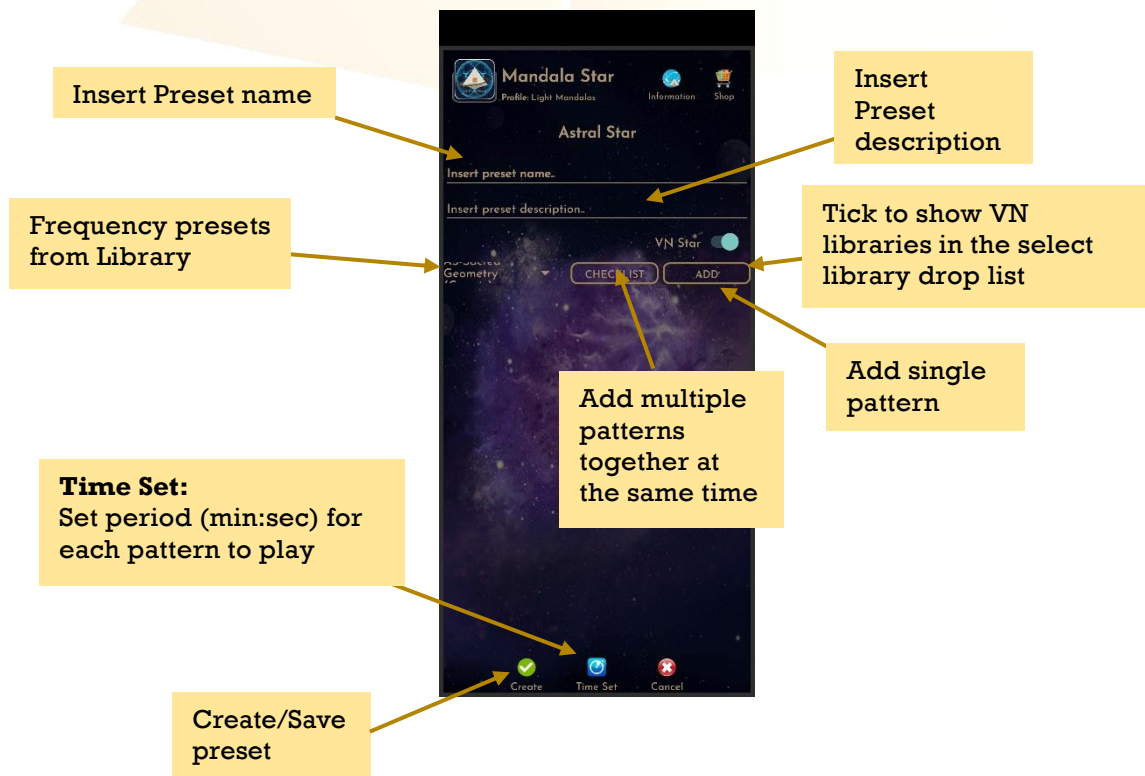
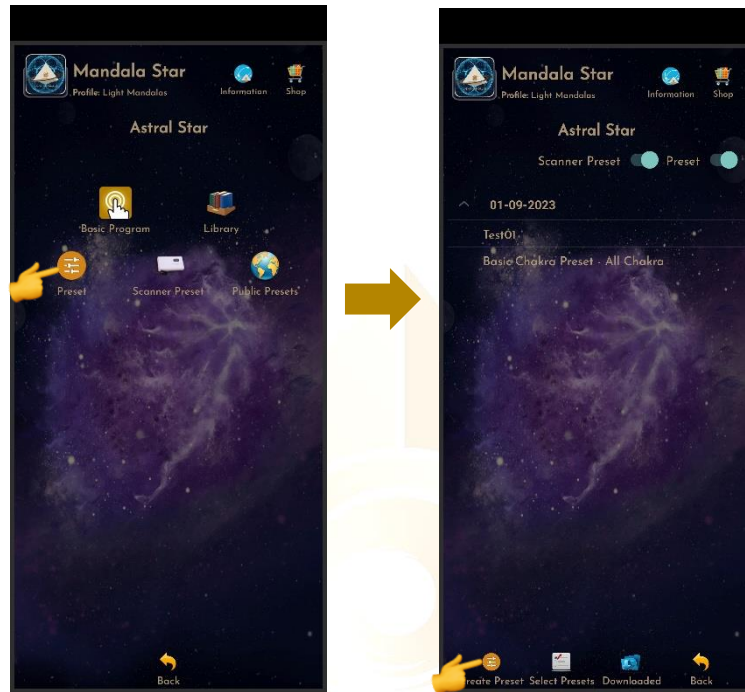
Tap on any library to show the selection.





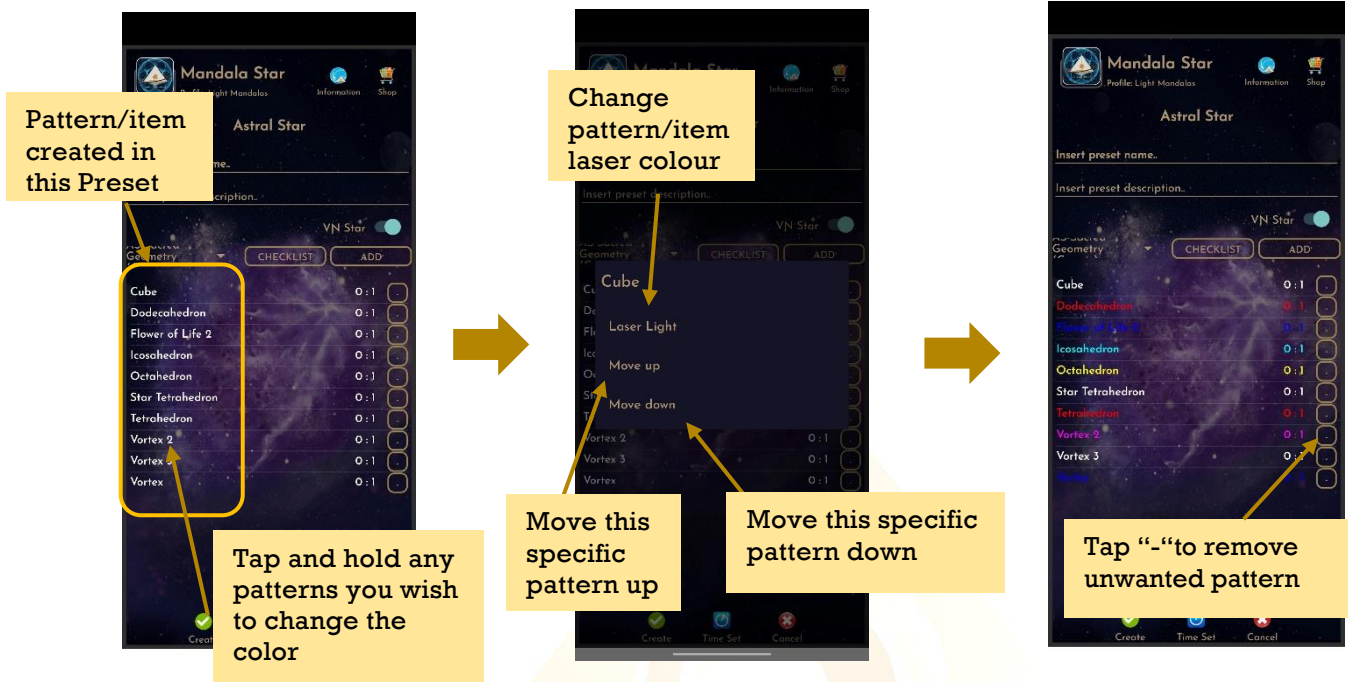
### 6.2.2 Create Preset

Users can manually create/customize their own presets. When the user is done with the preset pattern setup, tap on **Create** to save it.



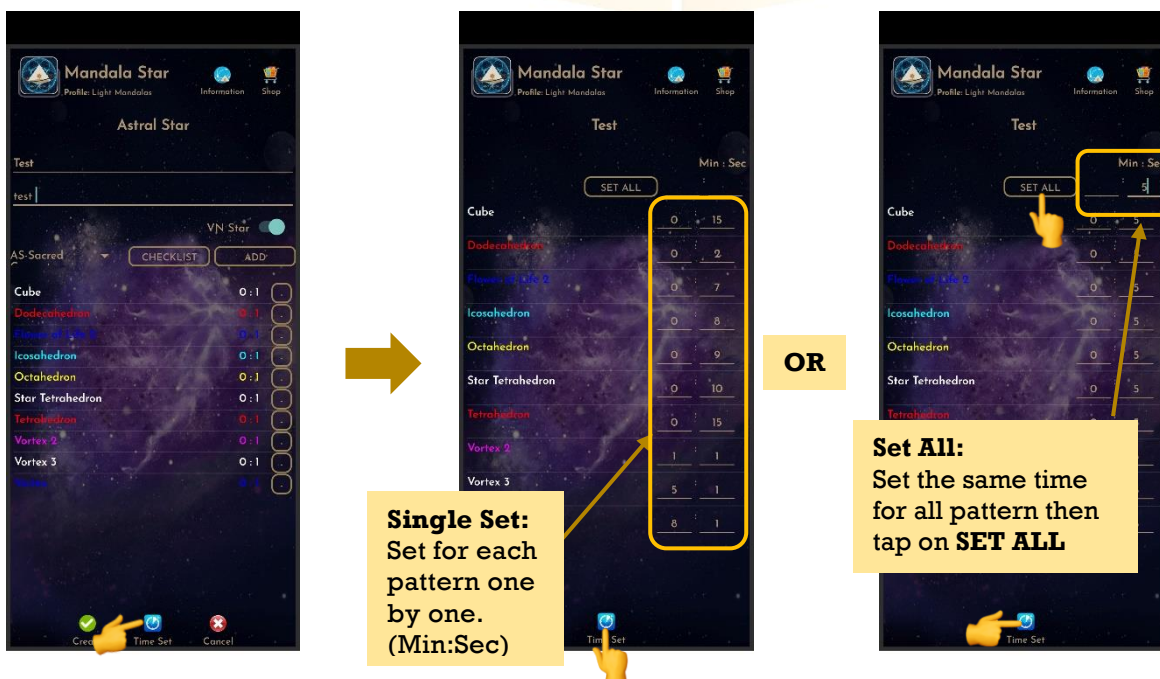
## 1. Preset Pattern Laser Color Setup:

The user can tap and hold any patterns to change the pattern's laser color.



## 2. Preset Pattern Play Time Setup:

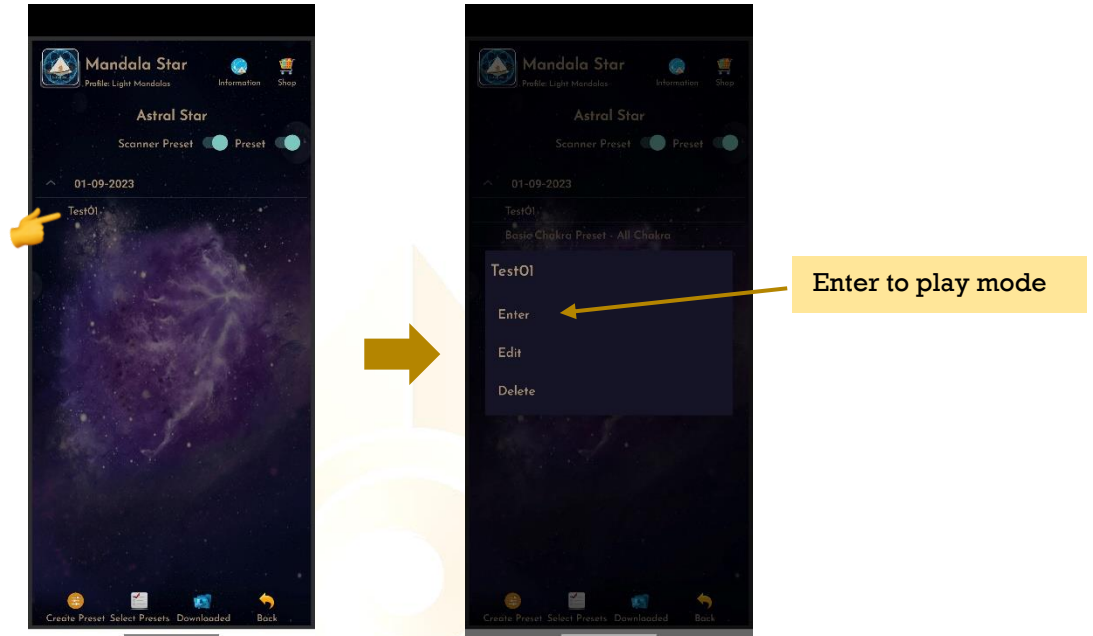
Users can customize play time for each pattern by tap on **Time Set** and choose the method of **Single Set** or **Set All**. When the time is set, user can tap on **Time Set** again to save it.



## 6.2.3 Preset Play Mode

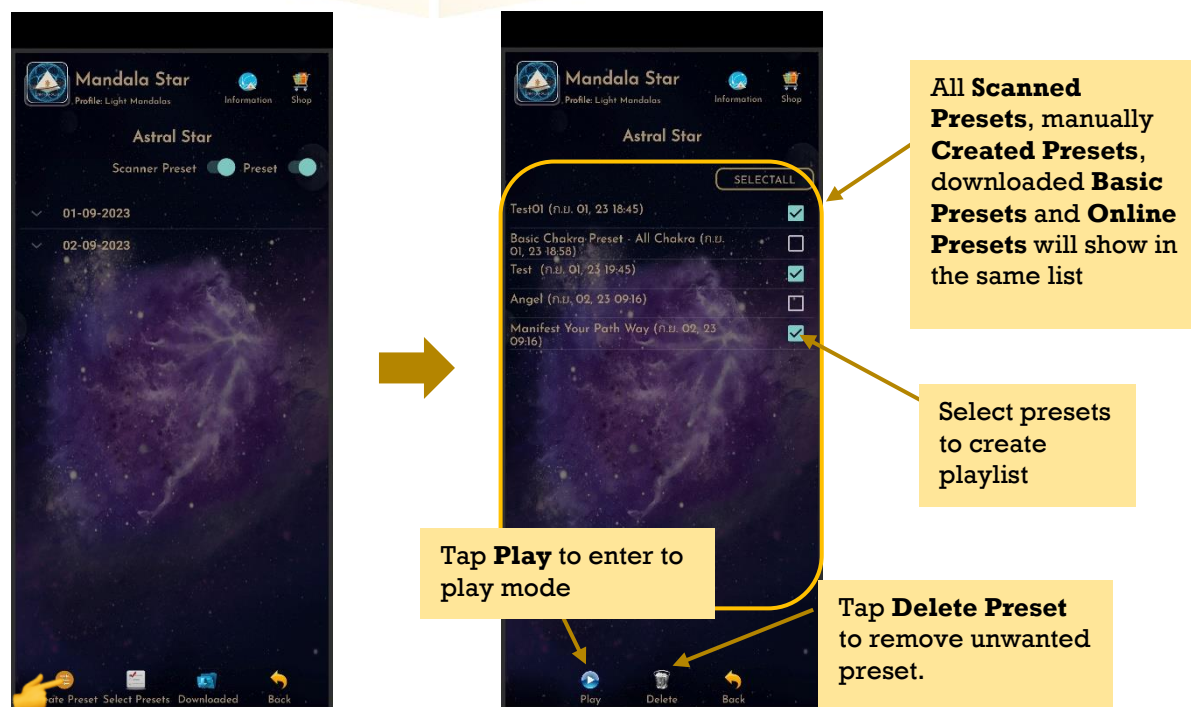
### 1. Select Single Preset:

Tap on any preset in the Preset Home Page you wish to play. Then, tap on **Enter** to enter to **Play Mode**.



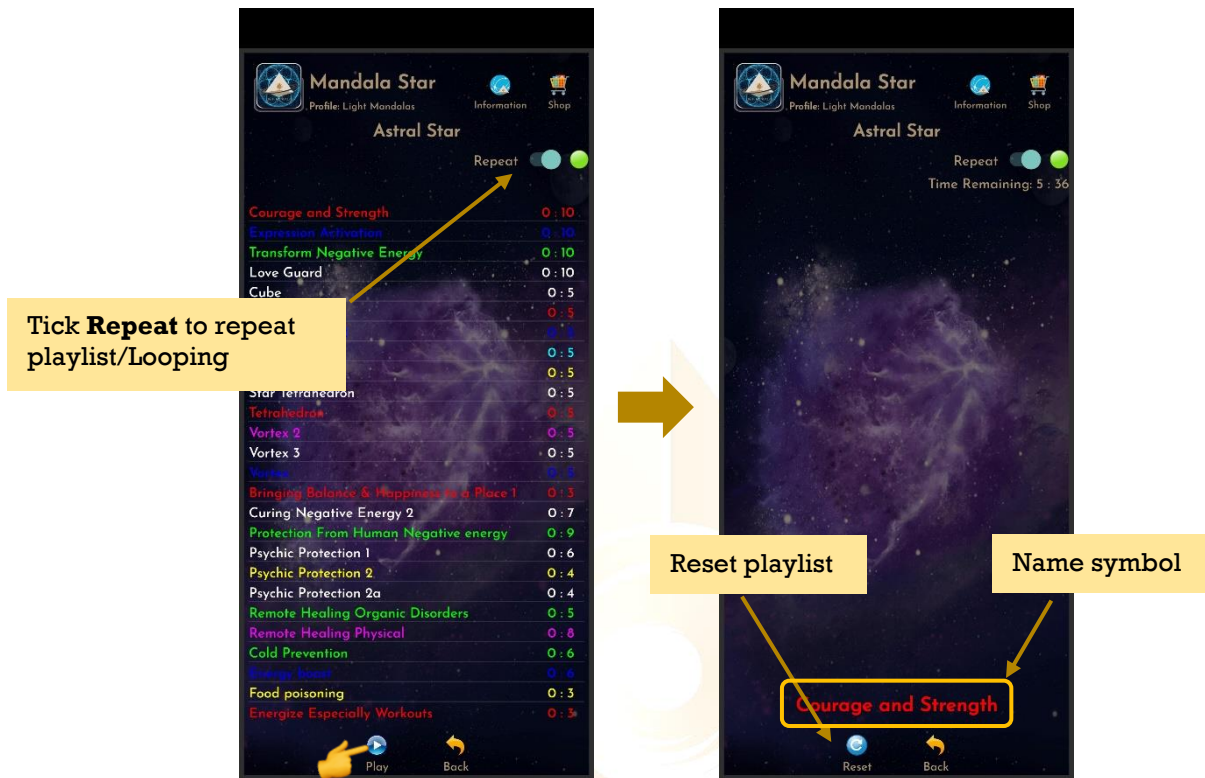
### 2. Select Multiple Preset:

Tab on **Select Presets** to create a playlist to play together. Users can select presets from **Scanned** presets, **Created Presets** or **Downloaded Basic Preset** and **Online Preset**.

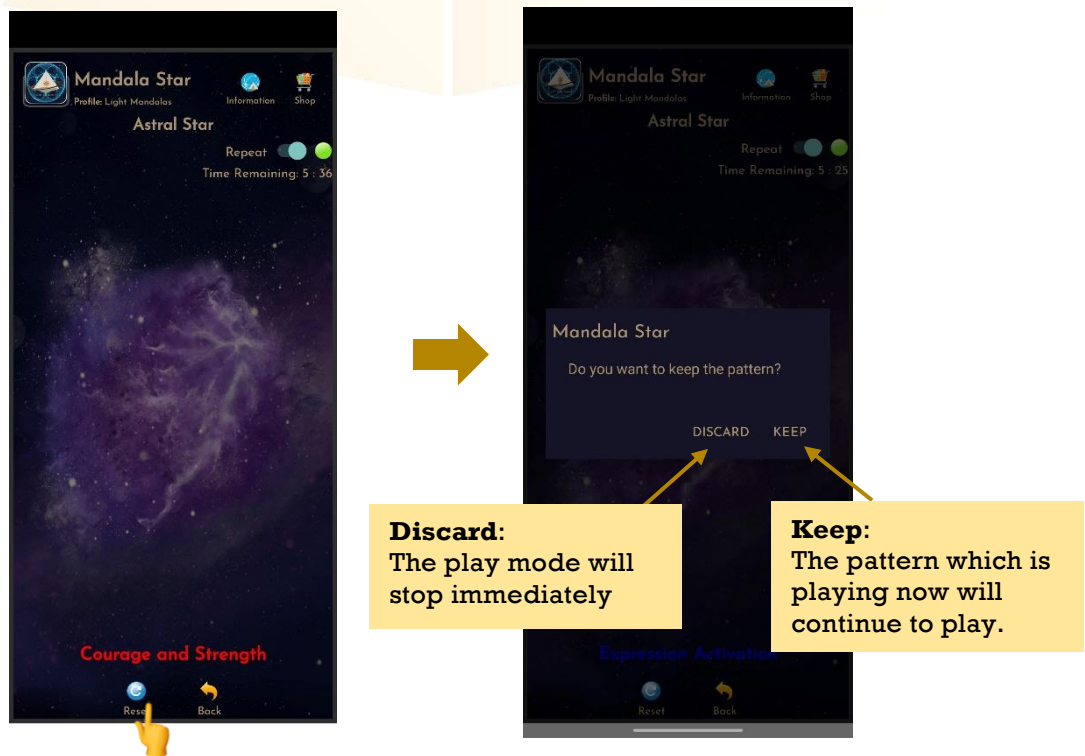


### 3. Play Mode:

Tap play to play the created playlist.



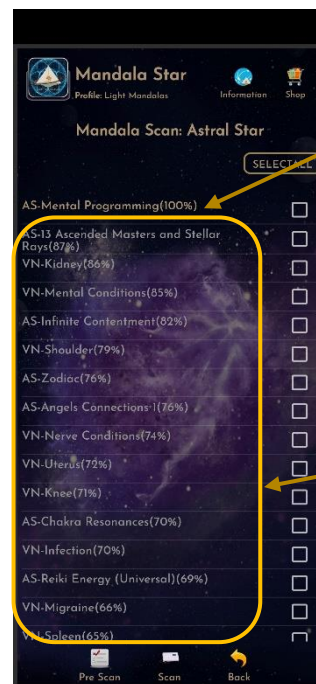
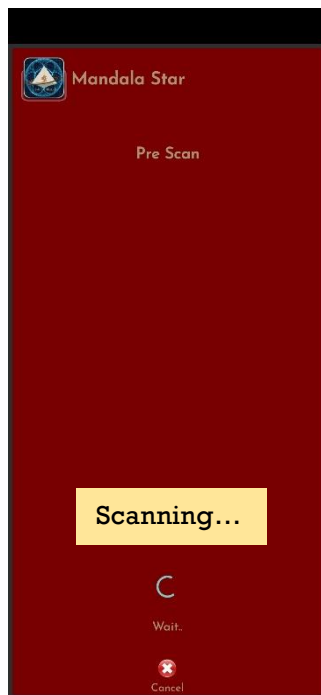
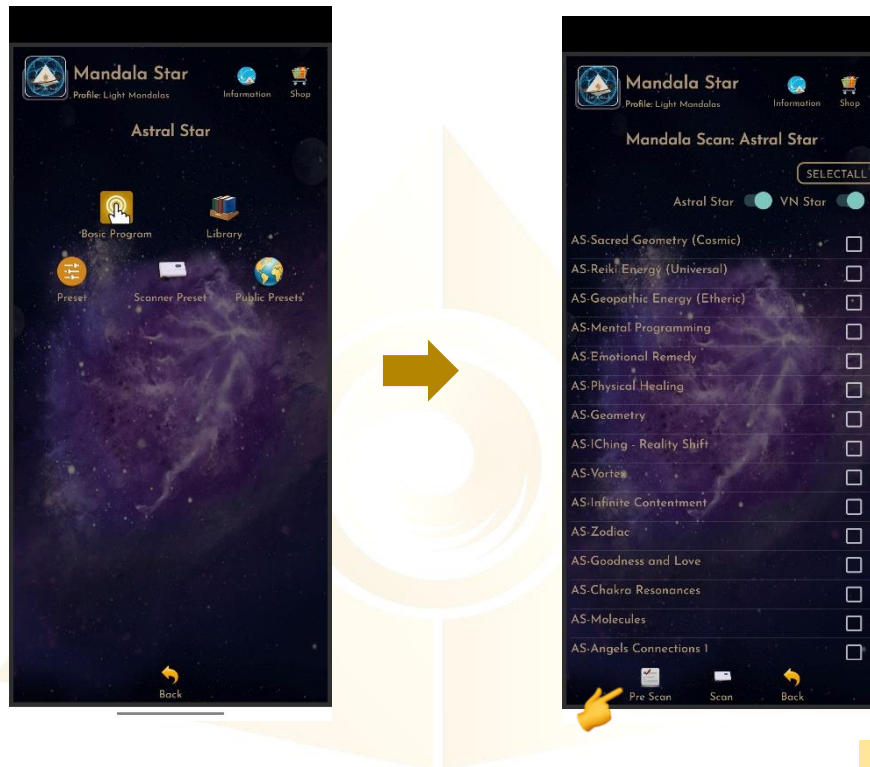
User can tap **Back** to go back to previous page if wish to recreate the playlist.



### 6.3 Pre Scan

This function will help users to choose the priority/significant libraries by user body coherence.

**\* Remember to pair Mandala Dynamic Scan with Mandala Star Application to use this function.**



The number of scans for this library during this scan.

\* The higher the number of scans of the item, the more significant the item is in this scan, and so on.

Grey color items represent insignificant libraries in this scan.

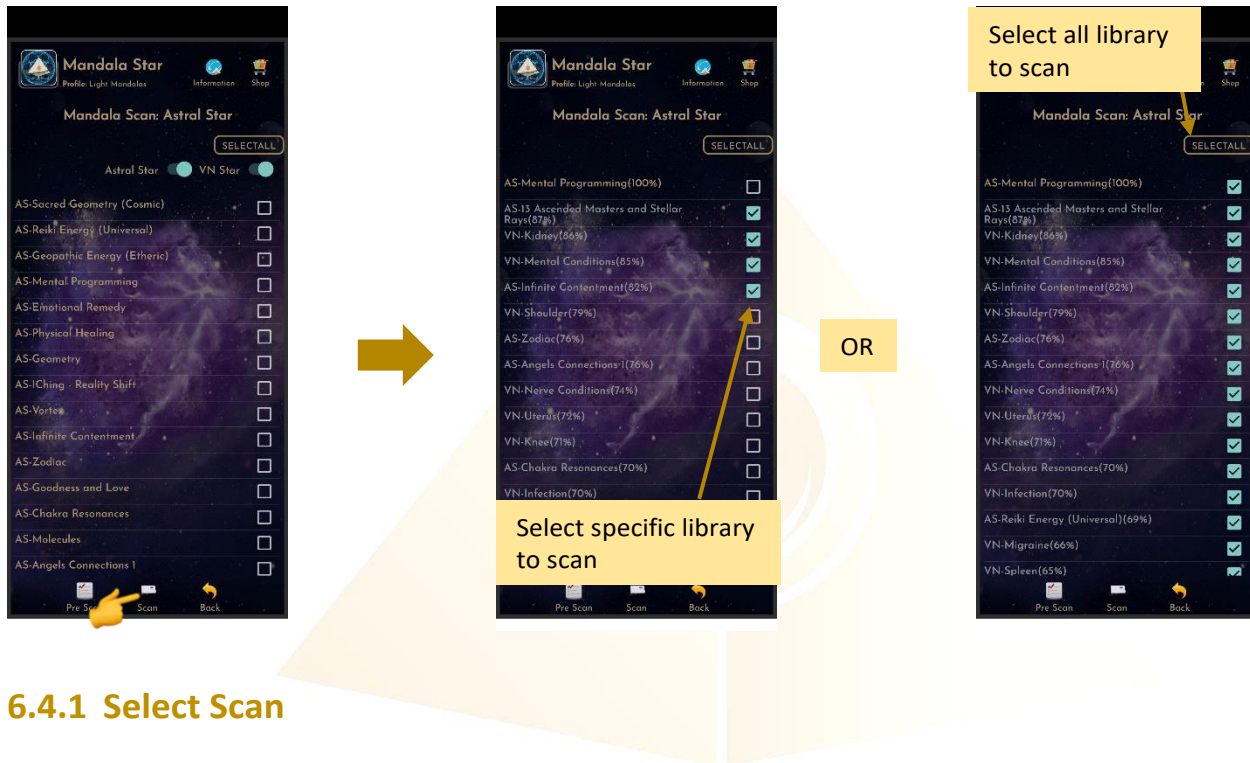
\* The significant % can be set by the user in the application settings.



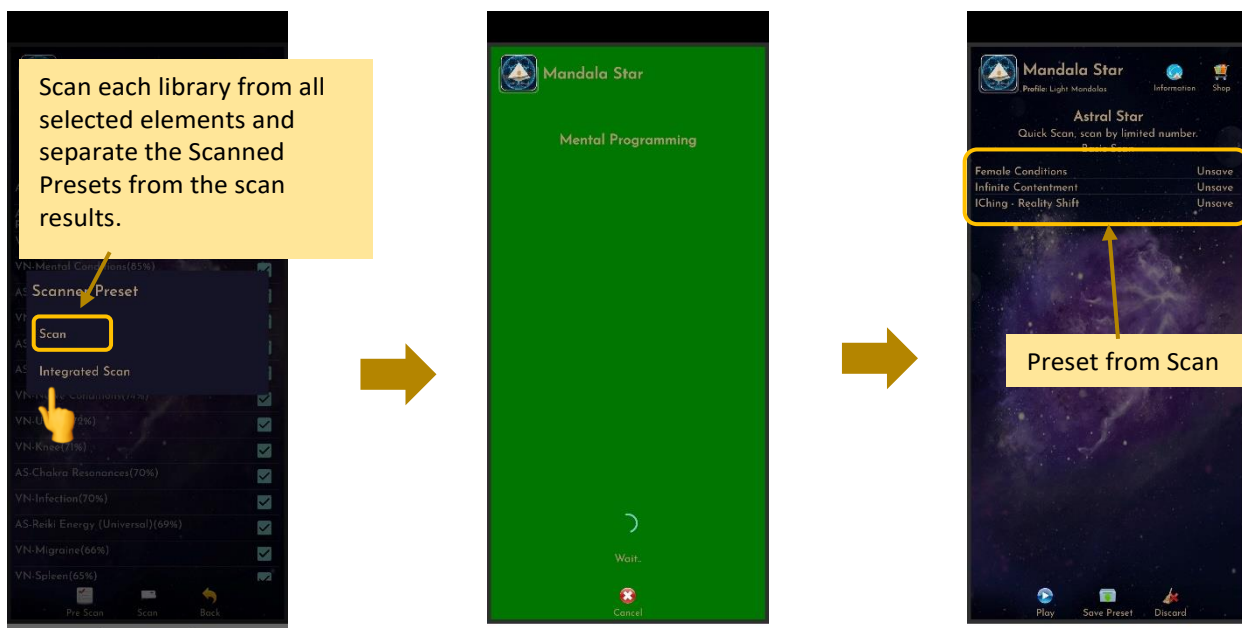
## 6.4 Scan

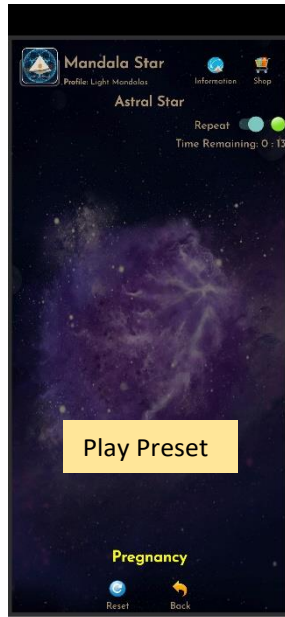
User can tap on **Scan** icon on the **Pre Scan Results** to continue the further scan or directly tap on **Scan** icon on the **Mandala Astral Star Home Page** to manually select specific library to scan.

Tap on **Scan** icon on the **Mandala Astral Star Home Page** and manually select library to scan.

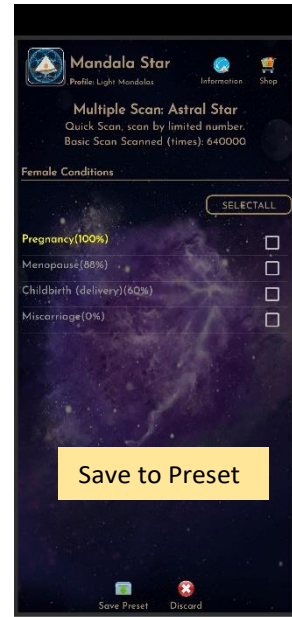


### 6.4.1 Select Scan

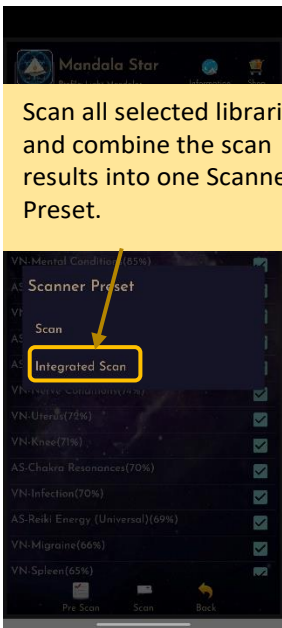




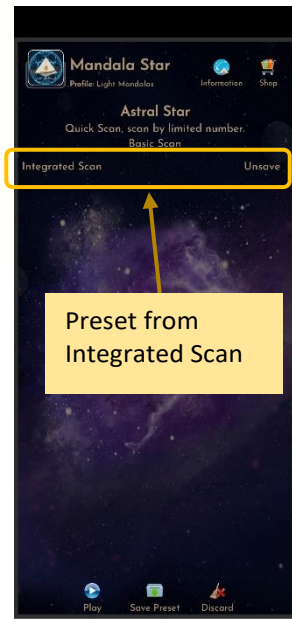
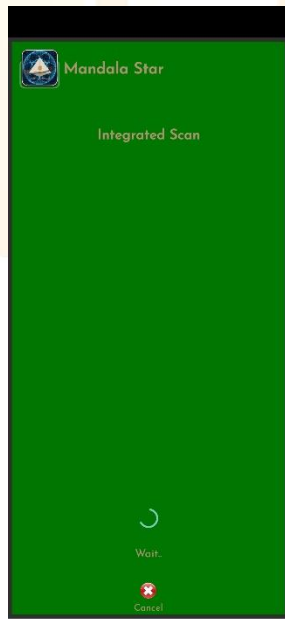
OR



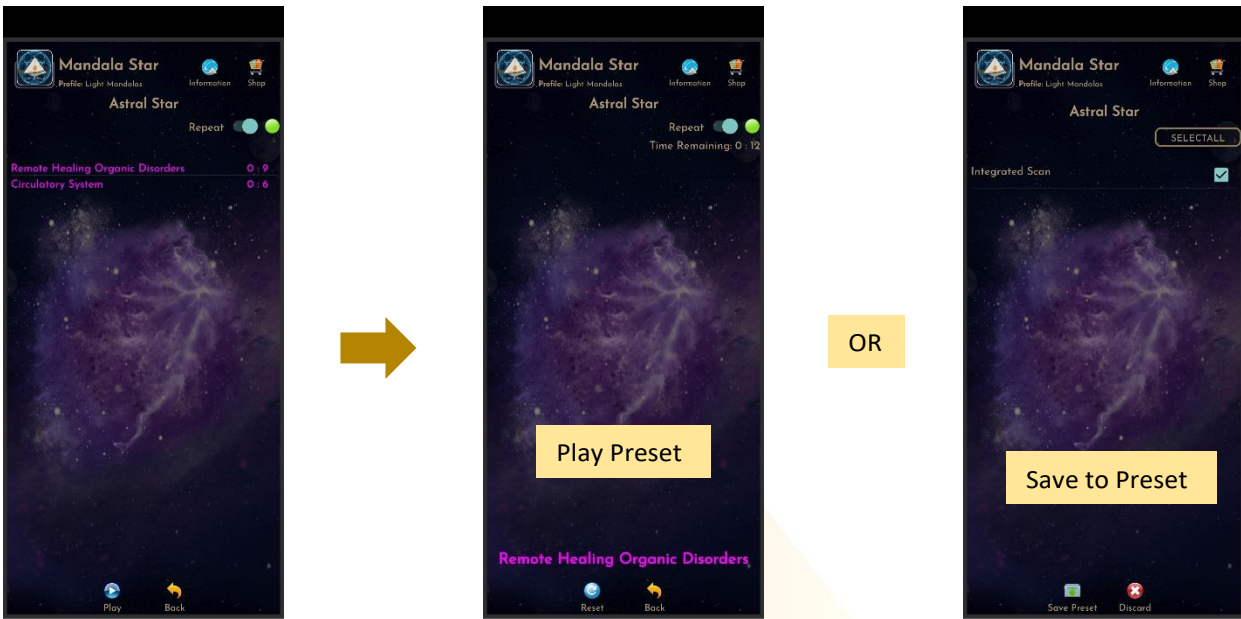
### 6.4.2 Integrated Scan



Scan all selected libraries and combine the scan results into one Scanned Preset.



Preset from Integrated Scan

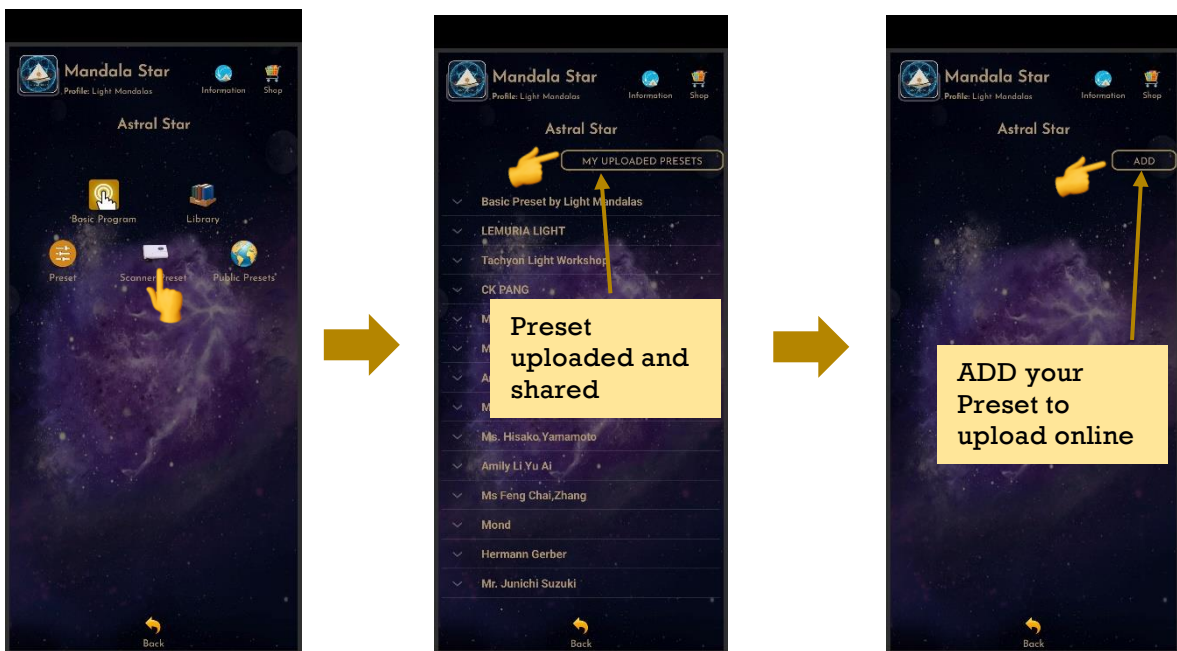


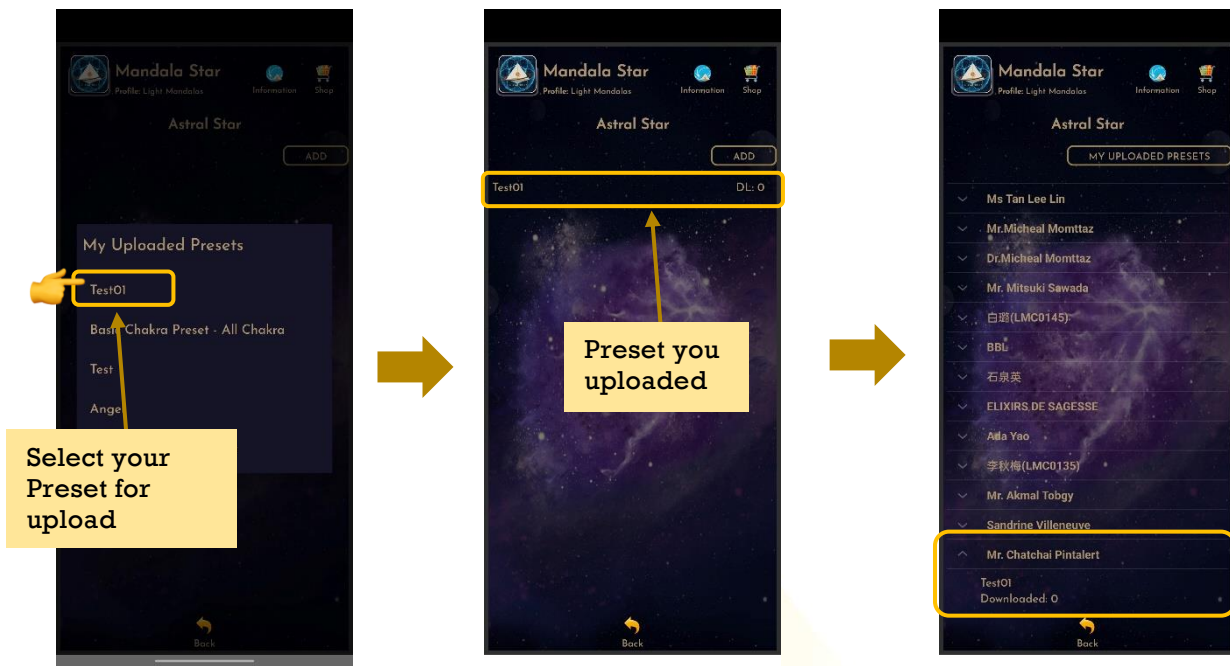
## 6.5 Public Presets

Users can download presets shared by other users in **Public Presets** mode. Users can also upload their preset online and share with other Light Mandalas user.

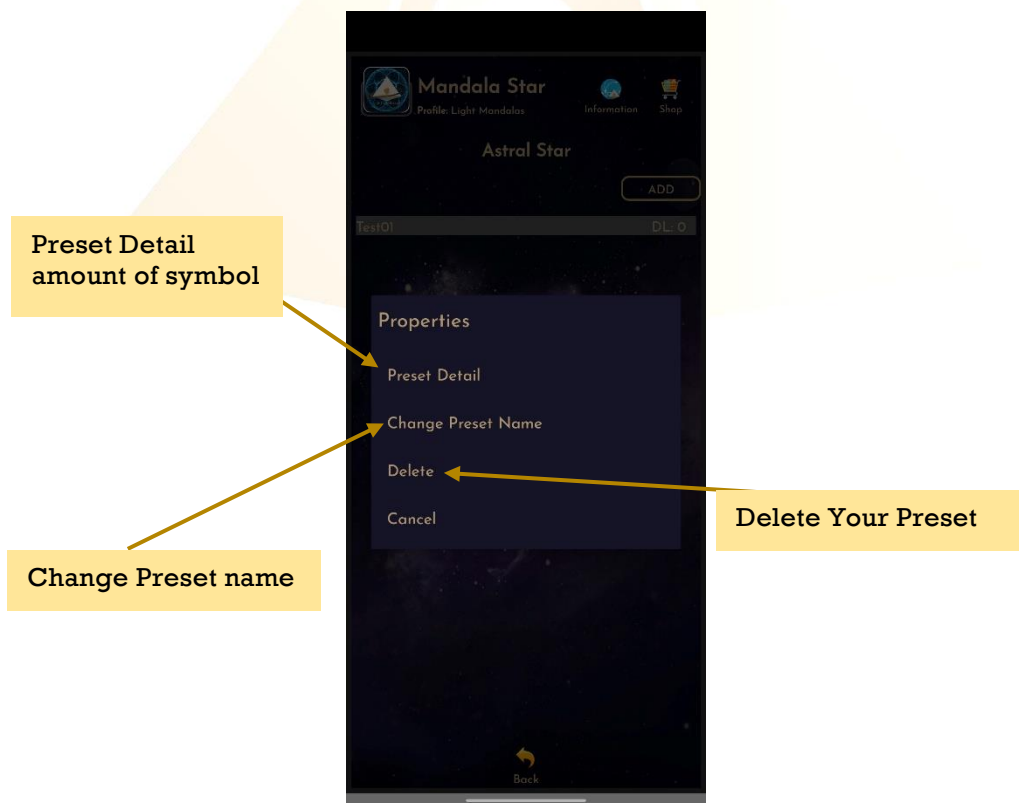
### 6.5.1 Upload Preset

For upload preset, tap on **My Shared Presets**, then tap on **Add** and choose the preset you wish to upload from the presets you have created earlier.





For delete the shared preset, tap on the preset and choose **Delete**.



## Disclaimer

All content found on the Light-mandalas.com Website, Facebook Page, YouTube, including: text, images, video, audio, or other formats are intended for informational, educational and research purposes only and neither Light Mandalas Co. Ltd. nor the publishers of this content take responsibility for possible health consequences of any person or persons reading or following the information in this educational content and is not intended to be a substitute for professional medical advice, diagnosis, treatment or cure. Always seek the advice of your physician or other qualified health professionals with any questions you may have regarding a medical condition.

**“No claims other than stress detection and stress reduction may be made”**

Light Mandalas products are to be used as a Heart Rate Variability Biofeedback system and Light, Color and Sound therapy, designed for stress detection and stress reduction only. The devices do not evaluate any issue other than stress. Stress can come from many sources; this system uses light and color and sound therapies to reduce stress. Remember, there has never been any reported side effects using light, color, and sound therapy anywhere in the world and throughout time.

### **Notes on the practices of low-level laser therapy (LLLT) and Biofeedback**

Low-level laser therapy (LLLT) is considered investigational by the FDA, and no medical claims of cures are permitted in the US; at this time however, low-level lasers are defined within the scope of complimentary medical practices such as physiotherapy, aesthetic, Traditional Chinese Medicine, and acupuncture, etc.

The FDA does not regulate Bio resonance tools, but they do regulate biofeedback tools and some Bio resonance tools are registered under this category.

\*It is a legal requirement at this time that the user does not make any medical claims of diagnosis or cure.

### **Precaution**

Light Mandalas products are working on energetic level. The standard benefit is energy clearance. During the process, your body and mind can be uncomfortable. The symptoms associated with overly rapid clearance of toxins. If those detox symptoms are too strong, you may need to stop using the products. You have to allow the clearance or detox to proceed, and you can start to try the products afterwards. However, if the issues remain the same, it may need to be completely discontinued for your own safety

**Shall there be any inquiry, please contact us for further support.**

**Light Mandalas Co., Ltd. (Thailand Headquarters):**

- **Light Mandalas Website:** [www.light-mandalas.com](http://www.light-mandalas.com)
- **Official:** [info@light-mandalas.com](mailto:info@light-mandalas.com)
- **Instagram:** [@mandalawave9](https://www.instagram.com/mandalawave9)
- **YouTube Channel:** Light Mandalas Official
- **Technical Support Email:** [cservice@light-mandalas.com](mailto:cservice@light-mandalas.com)

**Local agents contacts:**

- **Japan:** [japan@light-mandalas.com](mailto:japan@light-mandalas.com)
- **Taiwan:** [lovelight777888@gmail.com](mailto:lovelight777888@gmail.com)
- **Indonesia:** [lightseed2020bali@gmail.com](mailto:lightseed2020bali@gmail.com)
- **West Malaysia:** [lightworker@healingtech.org](mailto:lightworker@healingtech.org)
- **East Malaysia:** [malaysia@light-mandalas.com](mailto:malaysia@light-mandalas.com)
- **Hungary:** [horesnyibela@light-mandalas.com](mailto:horesnyibela@light-mandalas.com)
- **Switzerland, Germany, Austria, and the Netherlands:** [info@light-mandalas.ch](mailto:info@light-mandalas.ch)
- **France, Spain:** [france-spain@light-mandalas.com](mailto:france-spain@light-mandalas.com)
- **USA:** [usa@light-mandalas.com](mailto:usa@light-mandalas.com)
- **New Zealand, Australia:** [tachyonhealing.nz@gmail.com](mailto:tachyonhealing.nz@gmail.com)