

Mandala Star App User Manual

Mandala Light Alchemy Pulsar



Please read the manual before using the tools.

Version 2.0

Table of Contents

1	<i>Android Device Requirement</i>	2
2	<i>Mobile Application End-User License Agreement</i>	3
3.	<i>Application Download and Installation</i>	4
4.	<i>Mandala Star Application Main Page Features</i>	7
4.1	<i>Basic Mode and Advance Mode</i>	8
5.	<i>Application Setup</i>	9
5.1	<i>Application Activation</i>	10
5.2	<i>Application Settings</i>	11
5.2.1	<i>Bluetooth Connection Setup:</i>	11
2.1.1	<i>Light Alchemy Pulsar Setting</i>	13
6	<i>Mandala Light Alchemy</i>	14
6.1	<i>Basic Program</i>	14
6.2	<i>Library</i>	16
6.3	<i>Custom Frequency Preset</i>	18
6.4	<i>Scan Feedback</i>	19
6.5	<i>Scan Functions</i>	20
a.	<i>Pre Scan</i>	20
b.	<i>Scan</i>	22
	23
	23
	23
6.6	<i>Preset</i>	24
6.6.1	<i>Create Preset</i>	24
6.7	<i>Public Presets</i>	28
1.	<i>Download Preset:</i>	28
2.	<i>Upload Preset:</i>	29
6.8	<i>Audio Mode</i>	31

1 Android Device Requirement

Mandala Star application can only be operated with **Android mobile phone or tablet.**

Minimum requirement:

Operating System: Android OS

Android version: Android 12 or above

Others: with Bluetooth, WIFI function, Open location



2 Mobile Application End-User License Agreement

Please read this Mobile Application End-User License Agreement (“EULA”) carefully before downloading or using the Mandala Star App mobile application (“the application”). This EULA governs your use of the application, which will allow you to access Light Mandalas library and control Light Mandalas tools by your mobile device. Your use of the application indicates your consent to this EULA.

1. **License.** Light Mandalas Co., Ltd. grants you a revocable, non-exclusive, non-transferable, limited license to download, install, and use the application for your personal and internal business purposes strictly in accordance with this EULA

2. **Your Account.** Your use of the application requires that you have an account with Light Mandalas.

3. **Changes to this EULA.** Light Mandalas reserves the right to modify this EULA. Your continued use of the application after Light Mandalas publishes notice of changes to this EULA indicates your consent to the updated terms.

4. **No Included Maintenance and Support.** Light Mandalas may deploy changes, updates, or enhancements to the application at any time. Light Mandalas may provide maintenance and support for the application but has no obligation whatsoever to furnish such services to you and may terminate such services at any time without notice. You acknowledge that Google has an obligation to furnish any maintenance and/or support services in connection with the application.

5. **Acceptable Use.** You agree that you will not use or encourage others to use the application in a way that could harm or impair others’ use of the Mobile App.

6. **Privacy.** Light Mandalas don’t collect your information from your application. Information inside the application will be private.

7. **No Warranty.** Your use of the application is at your sole risk. The application is provided on an “As Is” and “As Available” basis. Light Mandalas expressly disclaims all worries of any kind.

8. **Suspension and Termination of the application.** Light Mandalas reserves the right to suspend or terminate your access to the application at any time.

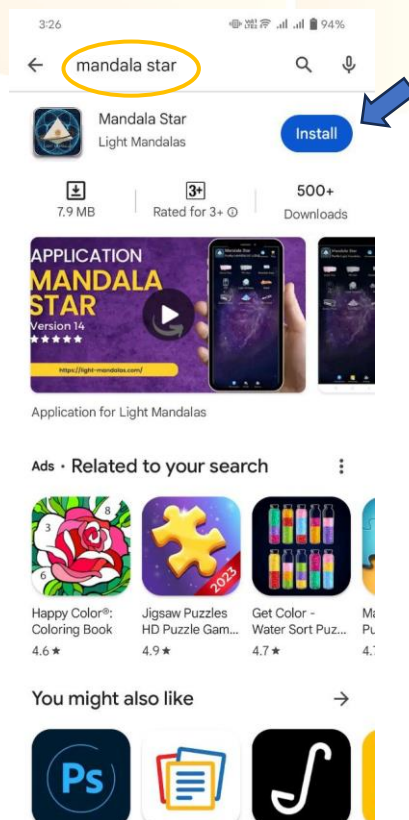
9. **Intellectual Property Rights.** In the event of a third-party claim that the application, or your possession and use of the application, infringes third party’s intellectual property rights, Light Mandalas, will be solely responsible for the investigation, defense, settlement and discharge of any such intellectual property infringement claim.

3. Application Download and Installation

1. Users can download Mandala Star app from **Google Play Store**.

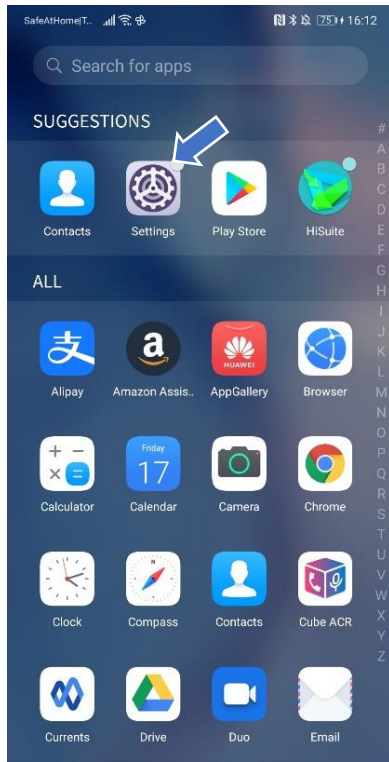


2. In “**Google Play Store**” try to search “**Mandala Star**”, and click to install the APP.

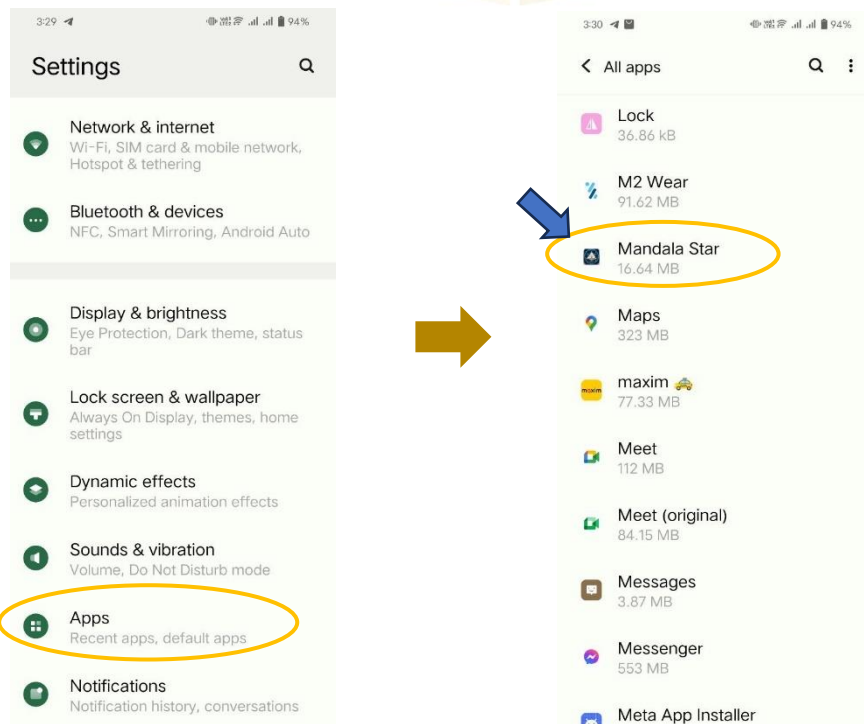


3. Allow permissions for Mandala Star APP

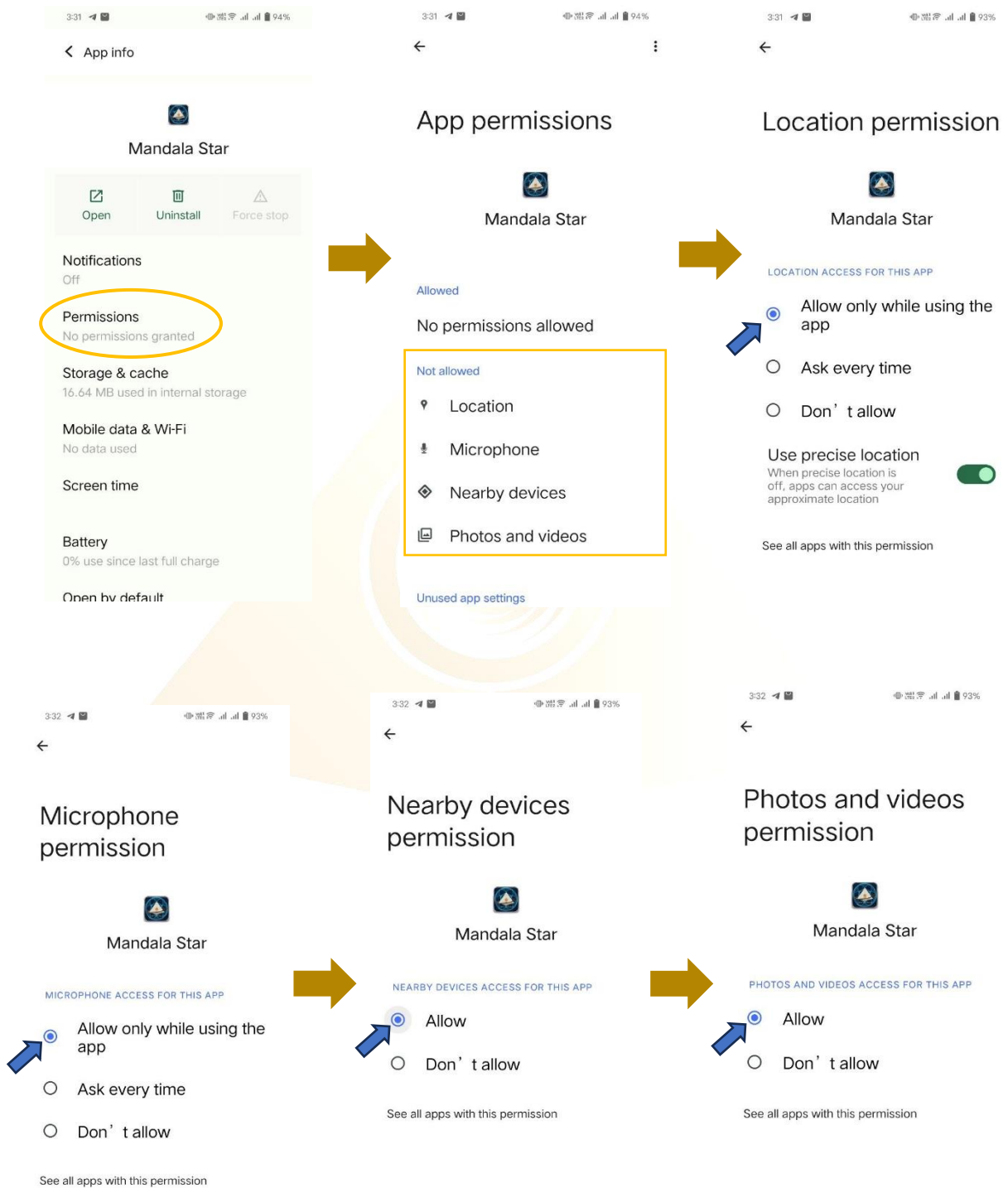
a. Go to Tablet Settings



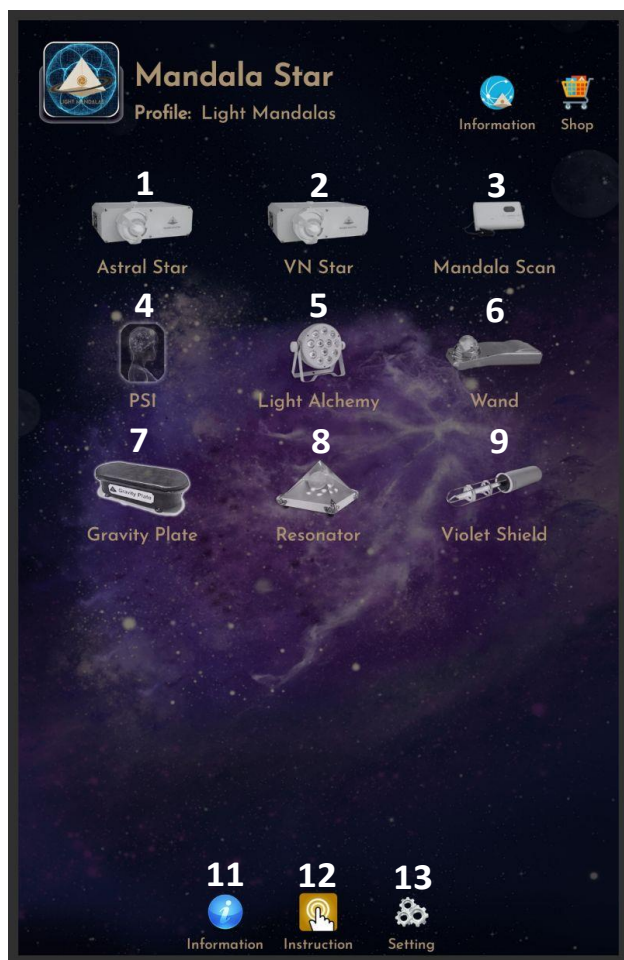
b. Go to "Apps" in the setting.



c. Tap on “Permissions” and click allow permission in each of function.



4. Mandala Star Application Main Page Features



Programs 1 to 9 on Light Mandalas devices correspond to specific functions, allowing users to select the appropriate program for their desired operation.

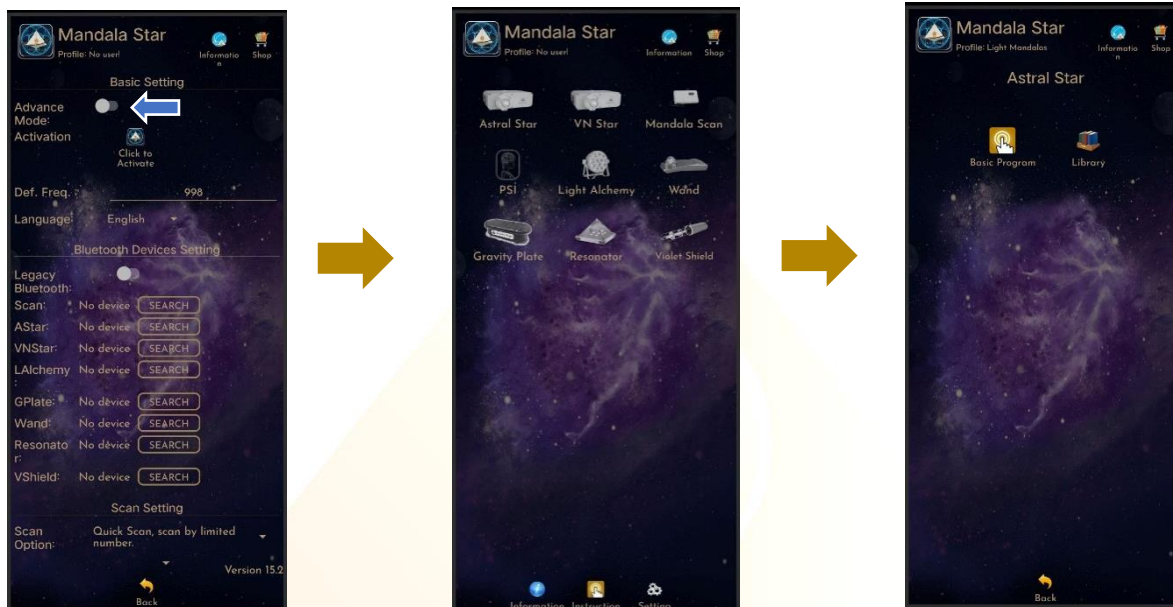
1. Mandala Astral Star
2. Mandala VN Star
3. Mandala Scan
4. Psycho Spiritual Integration – PSI
 - PSI library has to be purchased prior to use this program.
 - Must use with Mandala Scan.
5. Mandala Light Alchemy Pulsar
6. Mandala Wand
7. Gravity Plate
8. Mandala Resonator
9. Mandala Violet Shield

- 11. Information:** Provide the user with the latest application update information.
- 12. Instruction:** Provide video manuals for the user.
- 13. Setting:** Application Setting – Bluetooth Pairing, Mandala Scan Setting, Light Alchemy Setting, Language setting, Database refresh and Activation Code Release

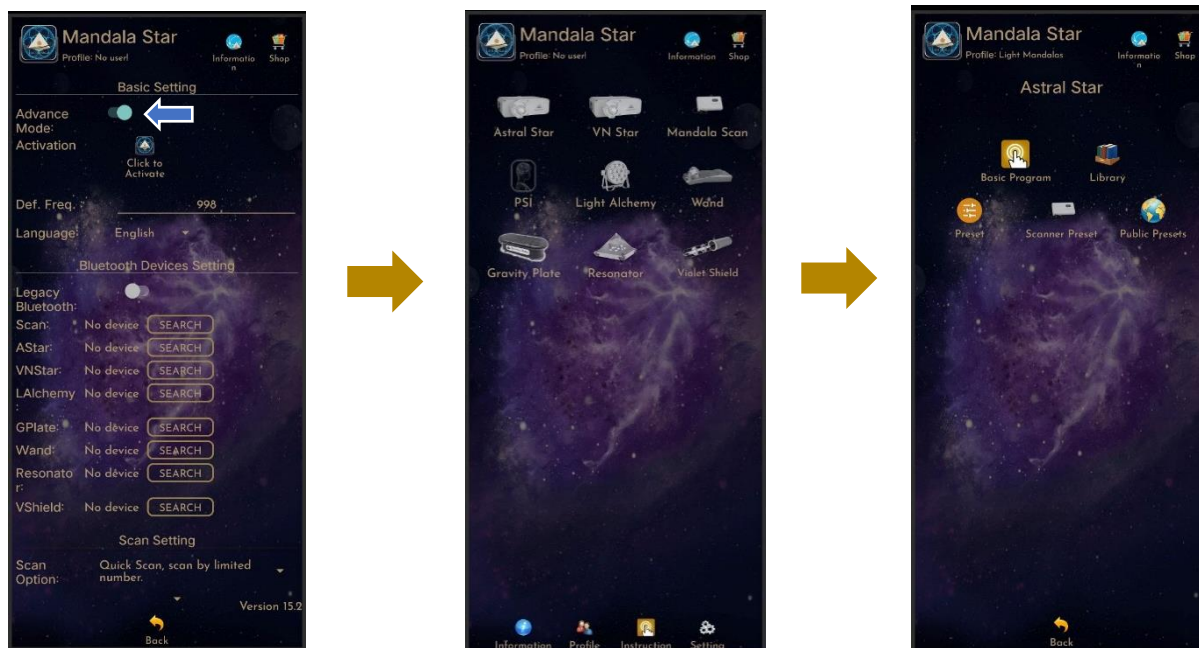
4.1 Basic Mode and Advance Mode

Users can select Basic Mode and Advance Mode from the APP setting. Basic Mode allows the beginner to use the basic programs and enjoys the basic healing. In Advance Mode, users can customize the frequency on their own and enjoys other features with the healing programs.

a. Basic Mode



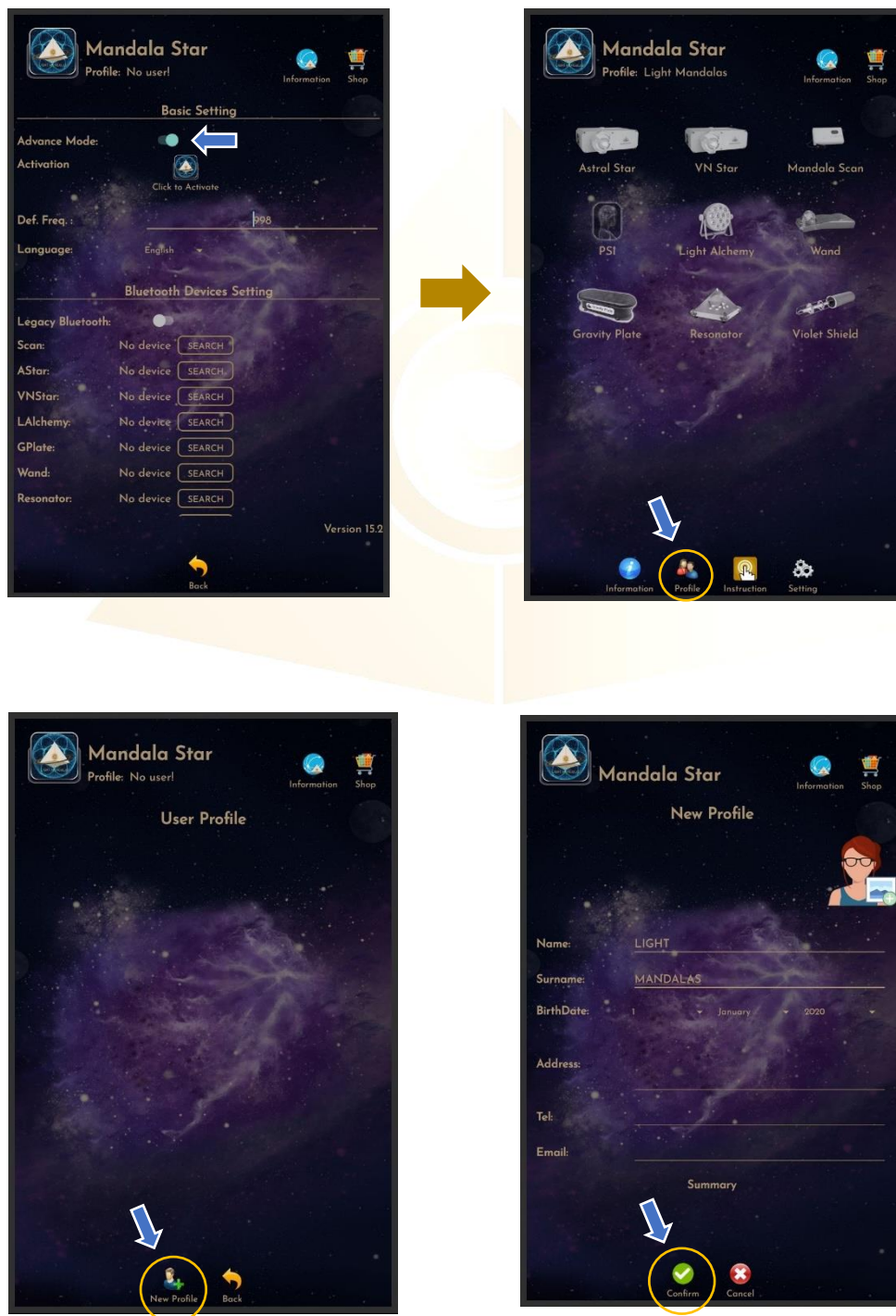
b. Advance Mode



5. Application Setup

Once the user turns on Advance Mode from the APP setting, “User Profile” will prompt up on the Home Page to add new user profile and it can add the picture profile as well. The user’s name will appear on the Home Page.

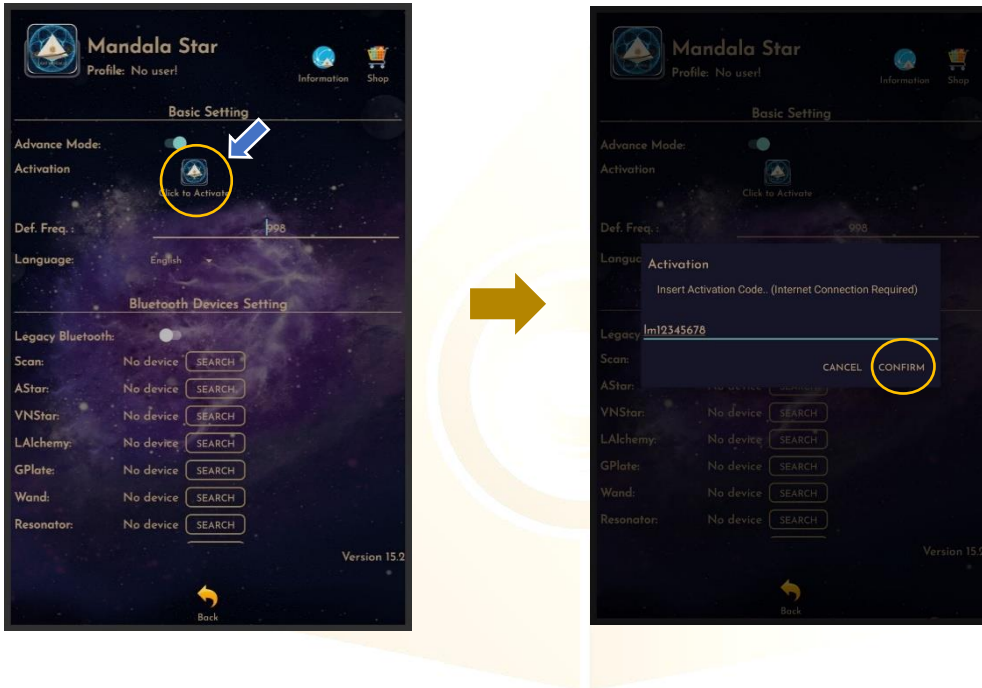
Users can add more another user by tapping on “User Profile” to insert other users’ information.



5.1 Application Activation

Users have to tap on the icon “Click to Activate” to activate the APP and use the programs. Insert the activation code with small letter of “lm” and tap confirm.

****User has to purchase for the libraries and can request activation code from the dealer/local agent.***



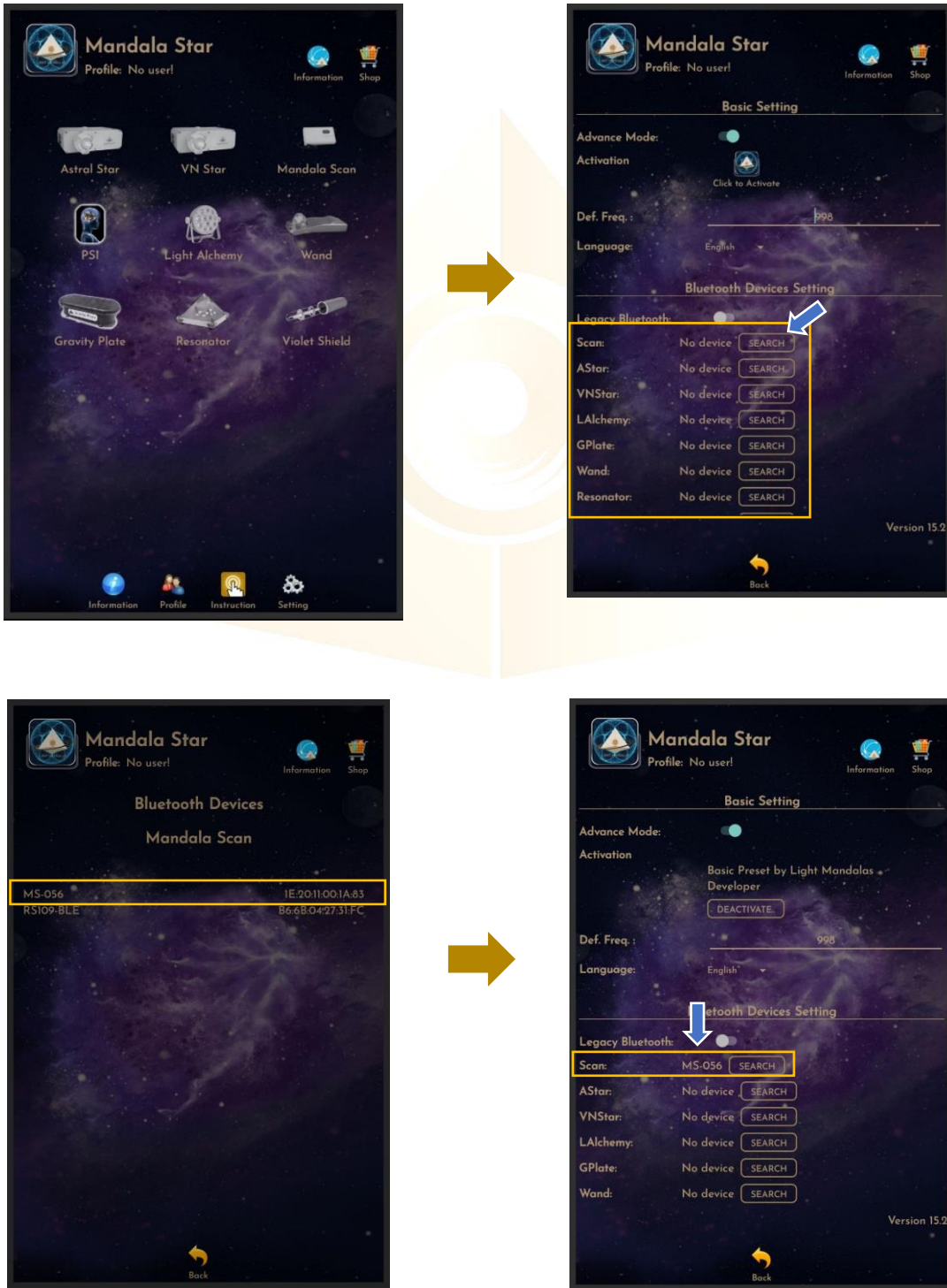
The PSI icon will turn to color if the customer has purchased the PSI library.



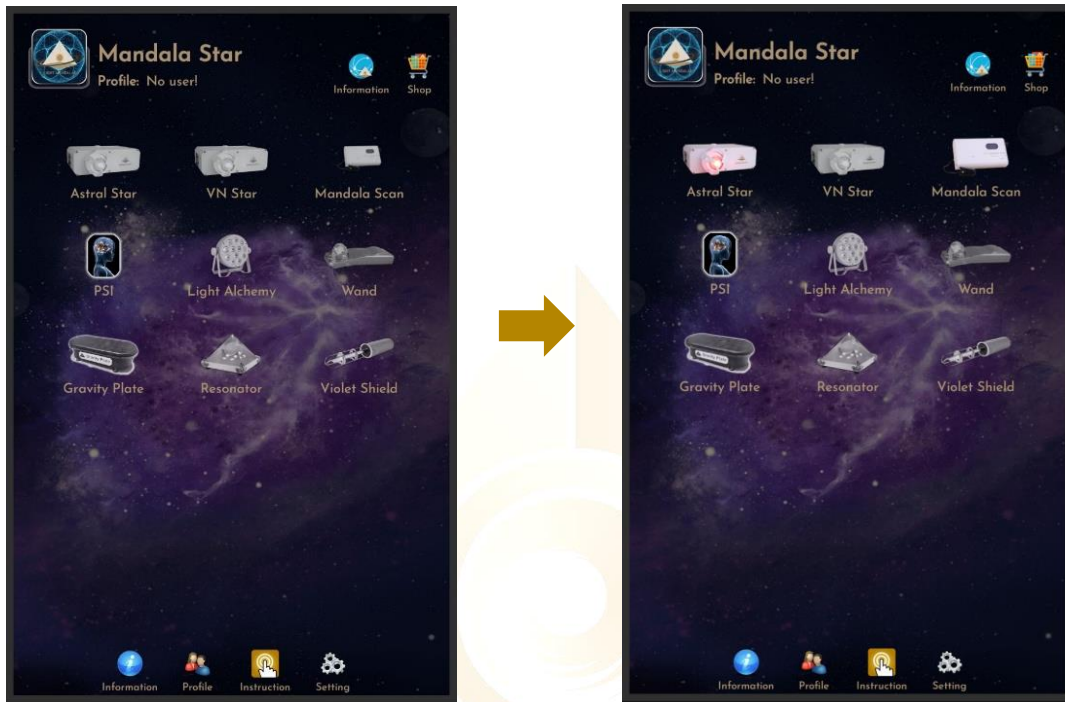
5.2 Application Settings

5.2.1 Bluetooth Connection Setup:

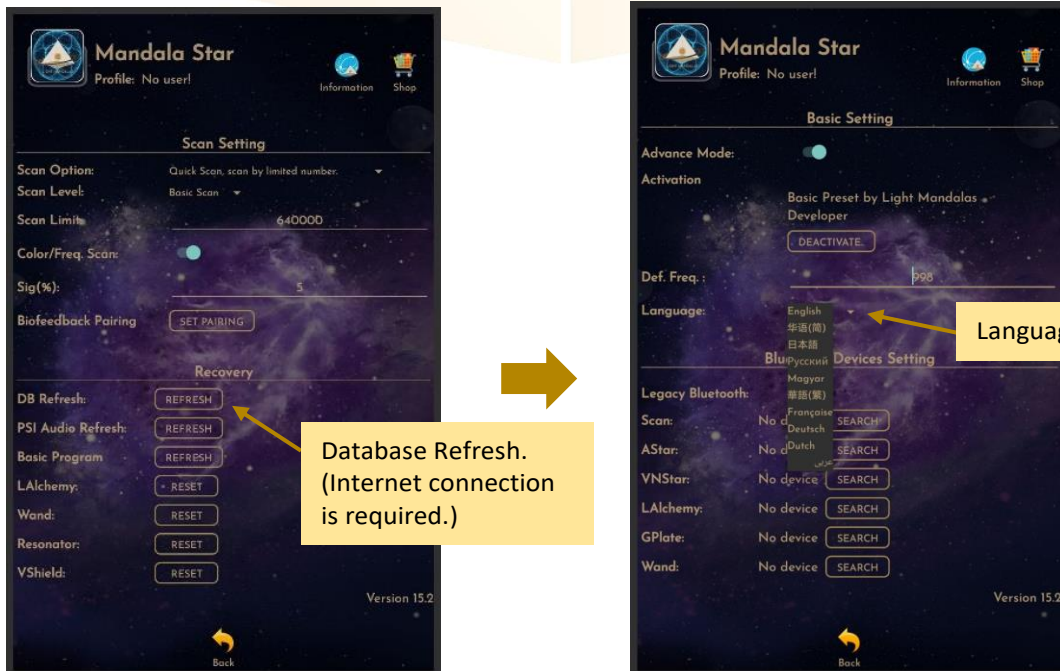
1. Go to the Mandala Star application “**Setting**”, tab on the device which you want to pair with and click “**Search**” to pair Bluetooth with Light Mandalas device.



- The icon of the device on the Home Page will turn to color when APP is pairing Bluetooth with Light Mandals devices.



5.2.2 General Setting



5.2.3 Mandala Dynamic Scan Setting

Scan Level:

1. Basic Scan: scan from Blue to Green state.
2. Deep Scan: will scan only on green state.

Scan Option:

1. Quick Scan: scan by limited number
2. Advance Scan and Bio Matrix Scan: scan by human body coherence. (Unlimited number of scan)

Color/Freq. Scan:

Color Scan for Astral Star and VN Star:

Turn on: different colors preset scan results.
Turn off: white color preset scan results.

Freq. Scan for Light Alchemy Pulsar:

Turn on: different frequency preset scan results.
Turn off: default frequency preset scan results.

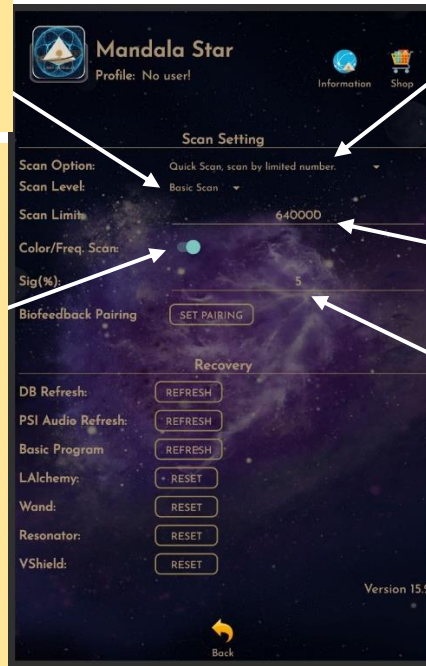
Freq. Scan for Mandala Wand:

Turn on: different color preset and laser scan results.
Turn off: no color preset and all laser ON (FULL) scan results.

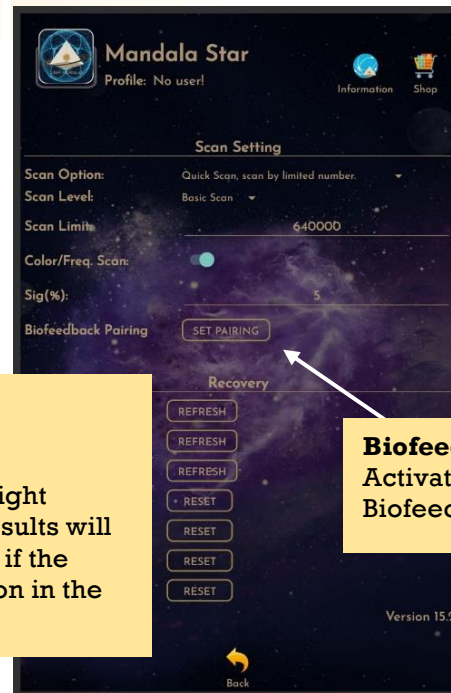
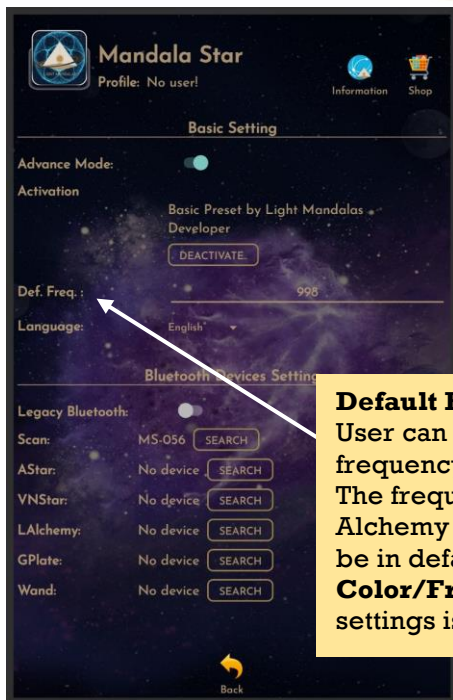
Scan Limit:

Set the scan numbers for Quick Scan.

Sig. (%): the significant of the scan result that focus on.



2.1.1 Light Alchemy Pulsar Setting



Default Frequency:
User can set the default frequency at here. The frequency for the Light Alchemy Pulsar Scan results will be in default frequency if the **Color/Freq. Scan** option in the settings is unticked.

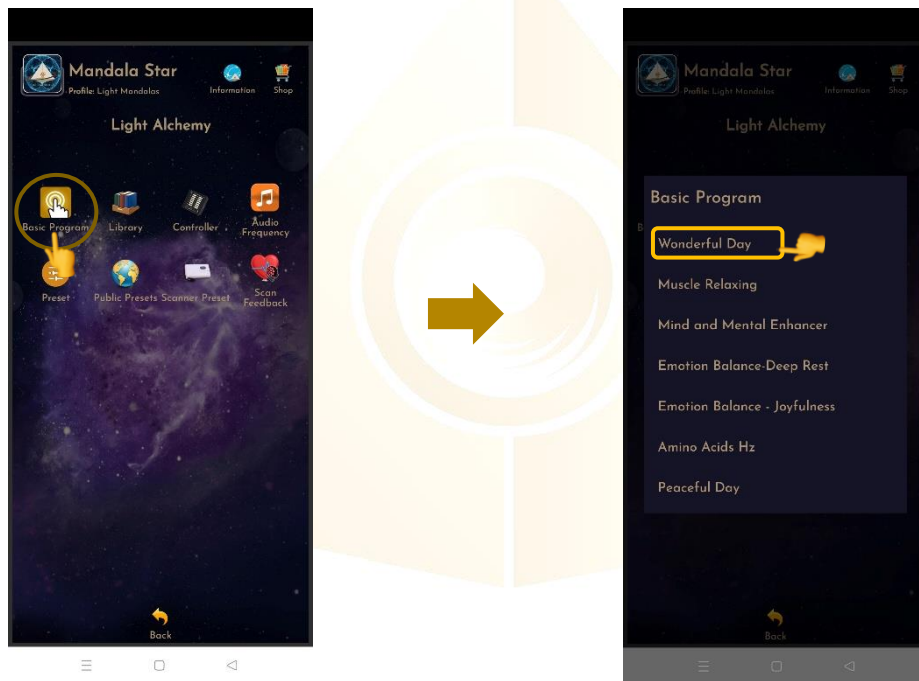
Biofeedback Pairing:
Activate and deactivate Biofeedback function.

6 Mandala Light Alchemy

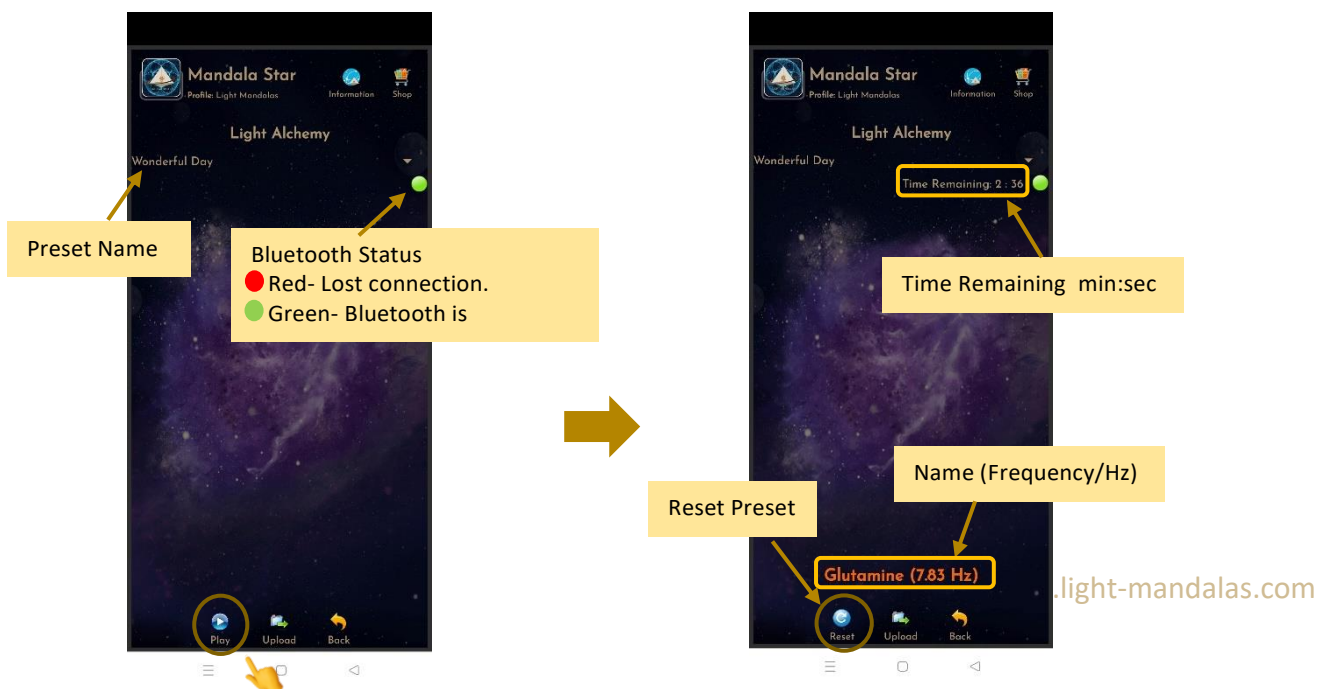
Tap on the **Mandala Light Alchemy Pulsar** icon in the **Mandala Star Application Main Page** then you will go to **Mandala Light Alchemy Pulsar Home Page**.

6.1 Basic Program

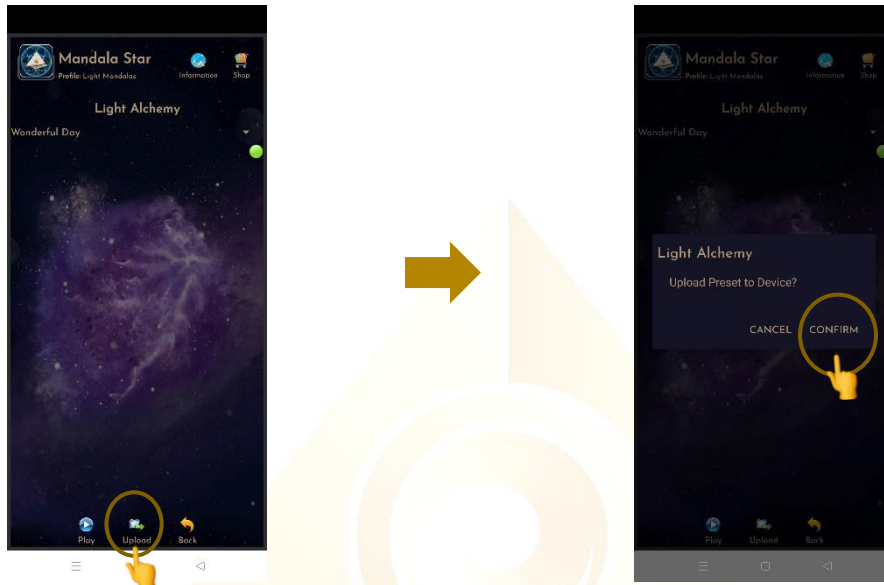
Basic Program is a default preset for beginners that has been created for ease of use and can be played as a Quick Preset by pressing Basic Program on the Light Alchemy Home Page. Select to play the preset in the Basic Program and tap to enter or start playing the presets.



When users have selected a Preset, you will be taken to the Preset main page. Light Alchemy will play the preset when you click to play.

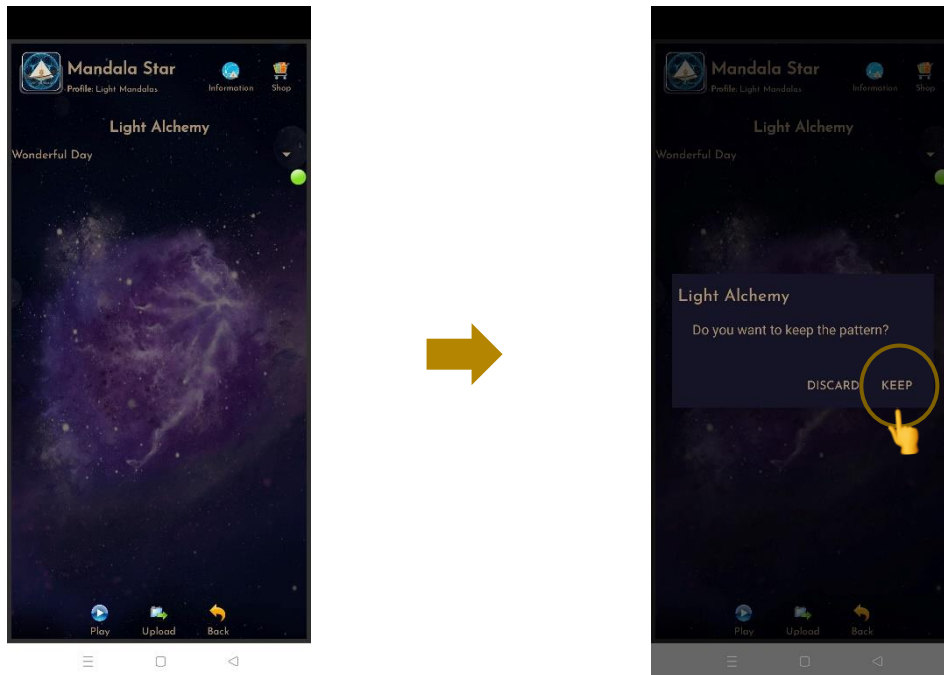


6.1.1 Upload Basic Program is to upload the selected Preset into the Light Alchemy device. When the Light Alchemy device is turned on, the device will play the uploaded Preset without having to open the application. Mandala Star in the picture select “Preset Wonderful day”, press Upload and select CONFIRM to upload. The preset will upload to the device.

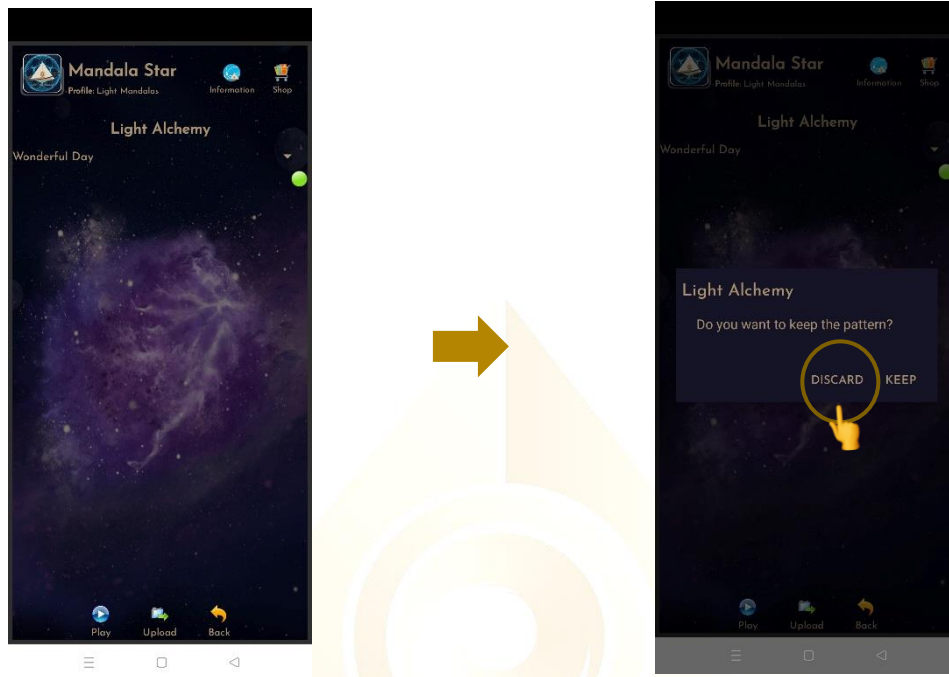


6.1.2 To return back to Light Alchemy home page, there will be two options for you to choose.

1. **Keep** means you exit the home page, but Light Alchemy still plays that preset.

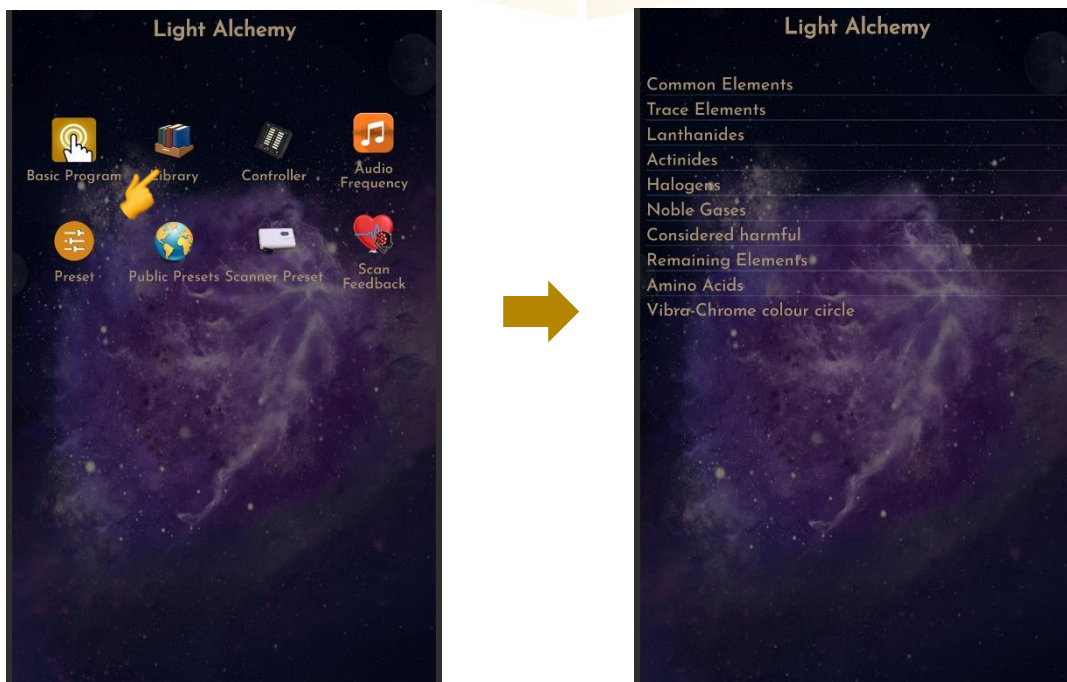


2. Discard is pressing to go to the first page, but Light Alchemy does not play any Program or Preset. The device still works but the LED does not show any color.



6.2 Library

Tap on **Library**, then select any frequency preset in the library you wish to play.



User can choose either **Atomic Weight** or **Atomic Number** as the frequency of the element to play. Then tap on the element name to play.



Connection Status:
 This indicator shows whether the tablet is connected to the device.
 Green → Connected
 Red → Lost connection

The **different frequency set** is used for the **different Light Pulsing** to achieve **different energy**. With the light pulsing, user can absorb the light information more easily and efficiently, thus making the healing more powerful.

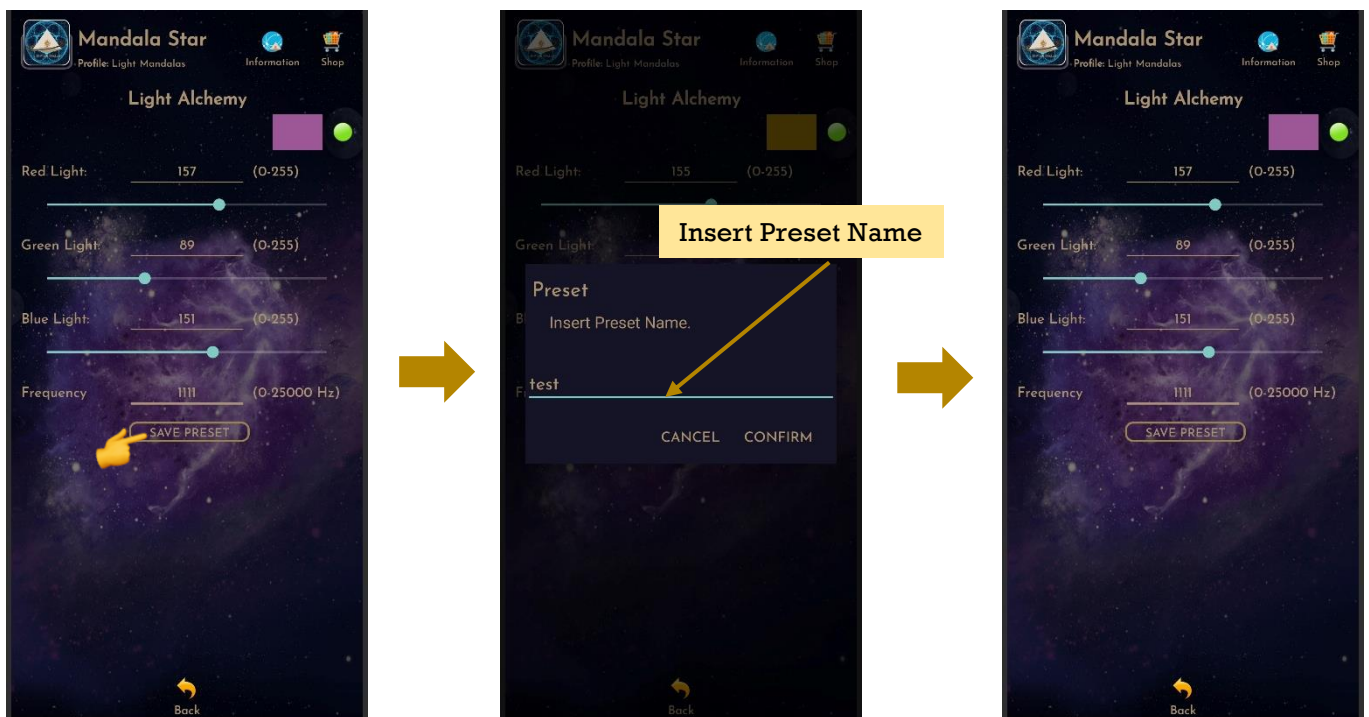
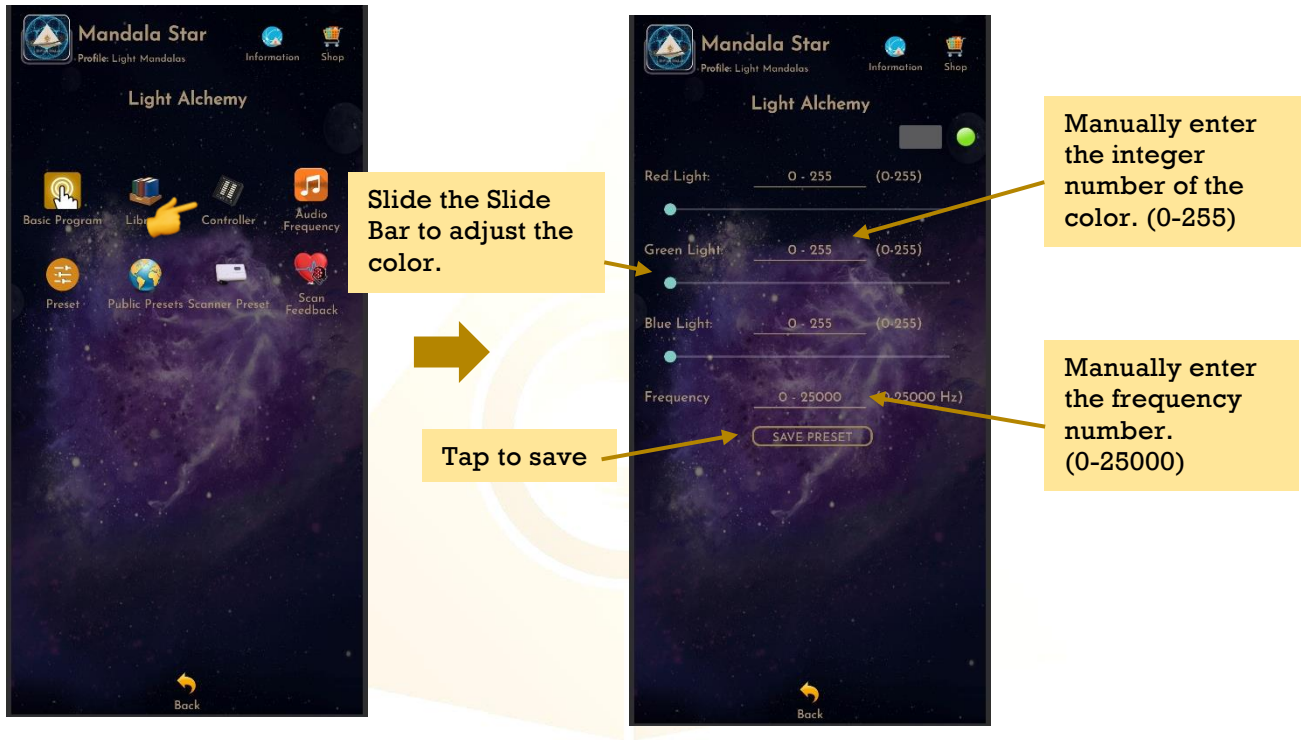


Other than these two fixed frequency sets, user can also set different frequency for the light to pulse by using **Scan Function** to scan for **Random Frequency** according to their coherent state or set the **Default frequency** in the **APP Setting**.

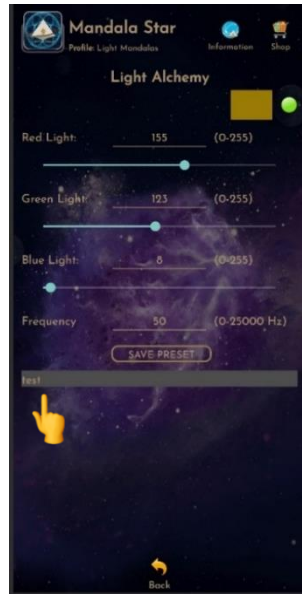
Users can switch to different libraries from the **Select Library** drop list.

6.3 Custom Frequency Preset

In this mode, users can customize their frequency and light color.



Users can choose another Customized Preset from the **Preset** drop list.
To return to the main page, tab on **Back** then select either **Discard** or **Keep**.

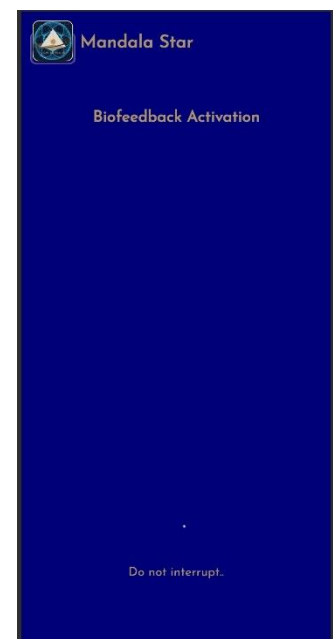
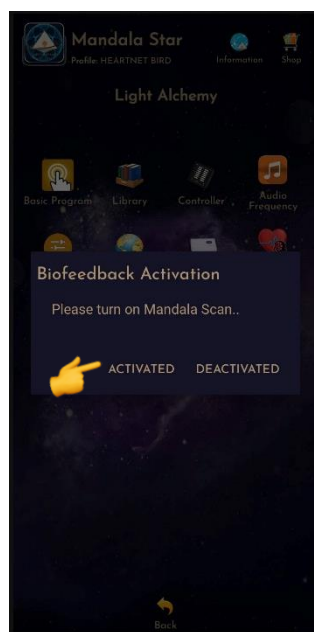
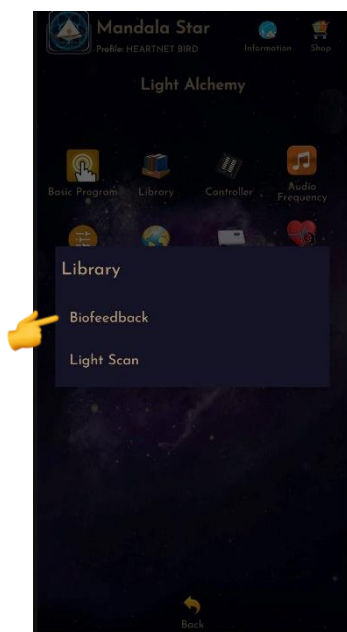


6.4 Scan Feedback

6.4.1 Biofeedback

Biofeedback mode can be used to observe the user's current state during their meditation or spiritual practice. Therefore, users can easily know their current state and allow them to efficiently train their focus.

** Please take note that Biofeedback mode has to be used together with Mandala Dynamic Scan. Mandala Dynamic Scan has to pair Bluetooth with Mandala Star Application to activate this function.*



Once successful for pairing, the Light Alchemy will project the light according to user current state.

Red: Mental/Emotional level of functioning.

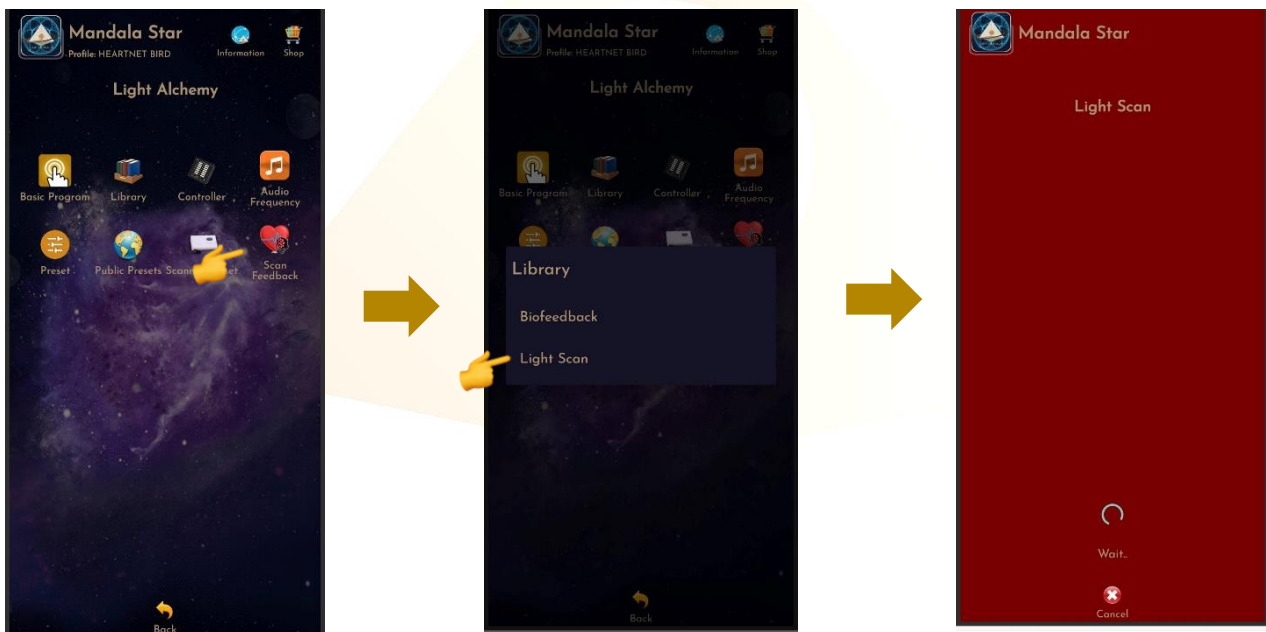
Blue: Heart, mind and soul beginning to connect.

Green: Coherent State. Merge between heart, mind and soul

If a user wants to deactivate Biofeedback function, simply tab on the **Biofeedback** Icon again and choose **Deactivate**.

6.4.2 Light Scan

Light Scan mode, a suitable light will be projected according to user body need in their current state. To set up this mode, simply follow the same steps stated in Biofeedback. After the **Biofeedback Pairing** is set in app **Setting**, follow the following steps:



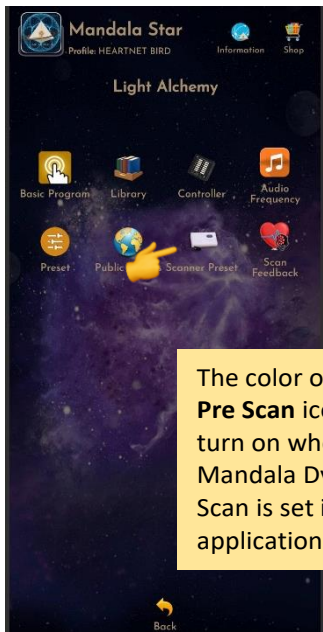
6.5 Scan Functions

This function will help users to choose the **priority/significant libraries** by user body coherence, then **user can directly tab to play the light in the significant library from the scan result**.

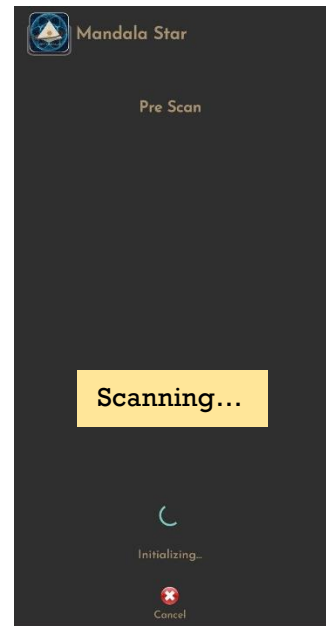
*** Remember to pair Mandala Dynamic Scan with tablet application to use this function.**

a. Pre Scan

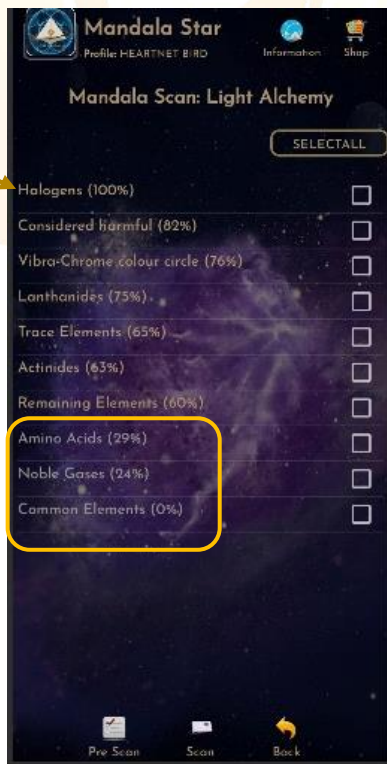
This function will help the user to choose the **priority/significant libraries** by user body coherence, then user can **select the significant libraries from the scan results to continue the further scan**.



The color of the **Pre Scan** icon will turn on when the Mandala Dynamic Scan is set in the application setting.



The number of scans for this library during this scan.
 * The higher the number of scan of the item, the more significant the item is in this scan, and so on.



Grey color items represent insignificant libraries in this scan.
 The significant % can be set by the user in the application settings.

b. Scan

User can tap on **Scan** icon on the **Pre-Scan Results** to continue the further scan or directly tap on **Scan** icon on the **Mandala Astral Star Home Page** to manually select specific library to scan.

Select all libraries to scan

Select specific library to scan

Scan each library from all selected elements and separate the Scanned Presets from the scan results.

Discard: Back to Light Alchemy home page.
Keep: To keep the presets playing while out of preset page.

Upload: upload presets to Light Alchemy.

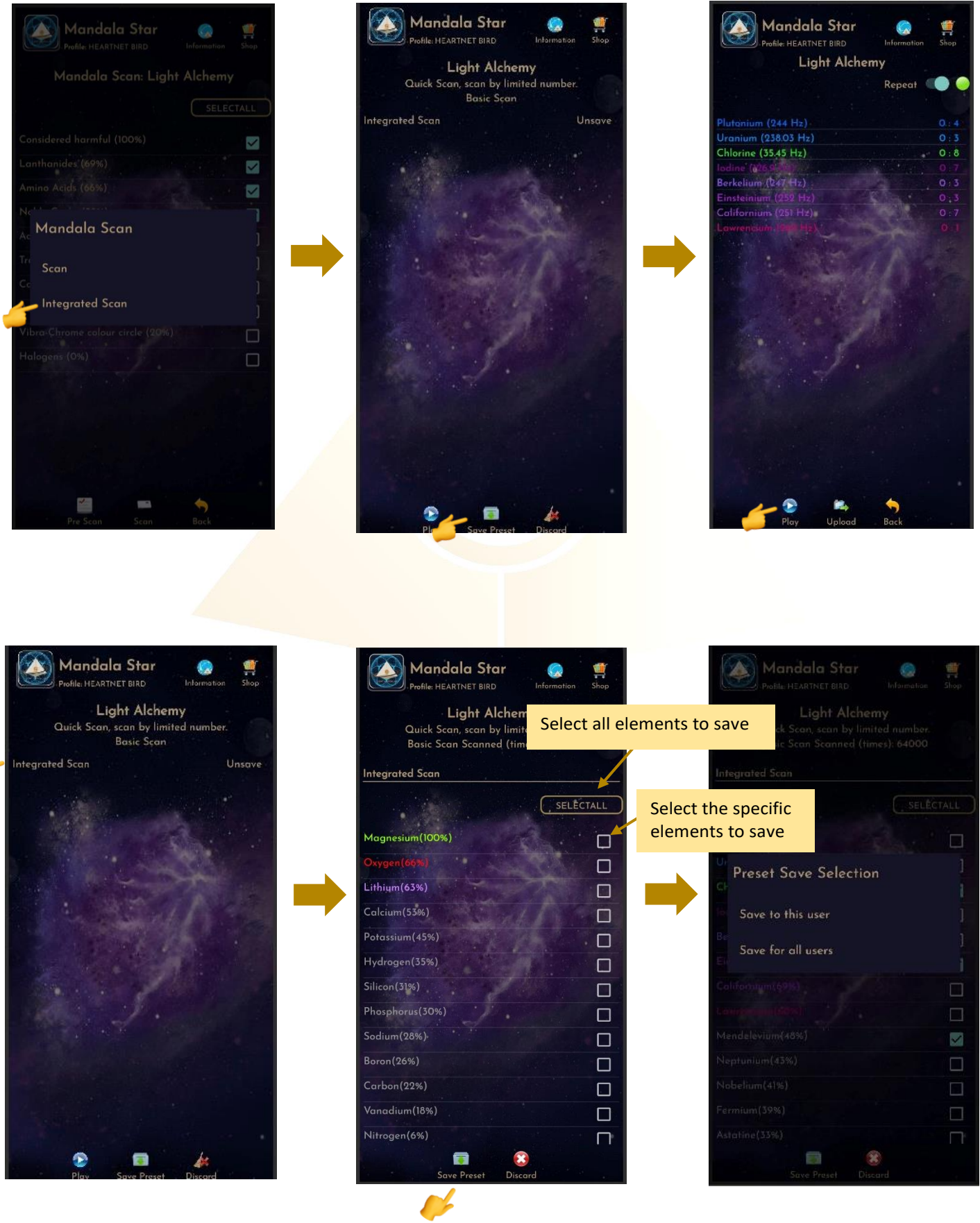
Light Alchemy
 Quick Scan, scan by limited number.
 Basic Scan

Considered harmful	Unsave
Lanthanides	Unsave
Amino Acids	Unsave
Noble Gases	Unsave

Light Alchemy
 Repeat

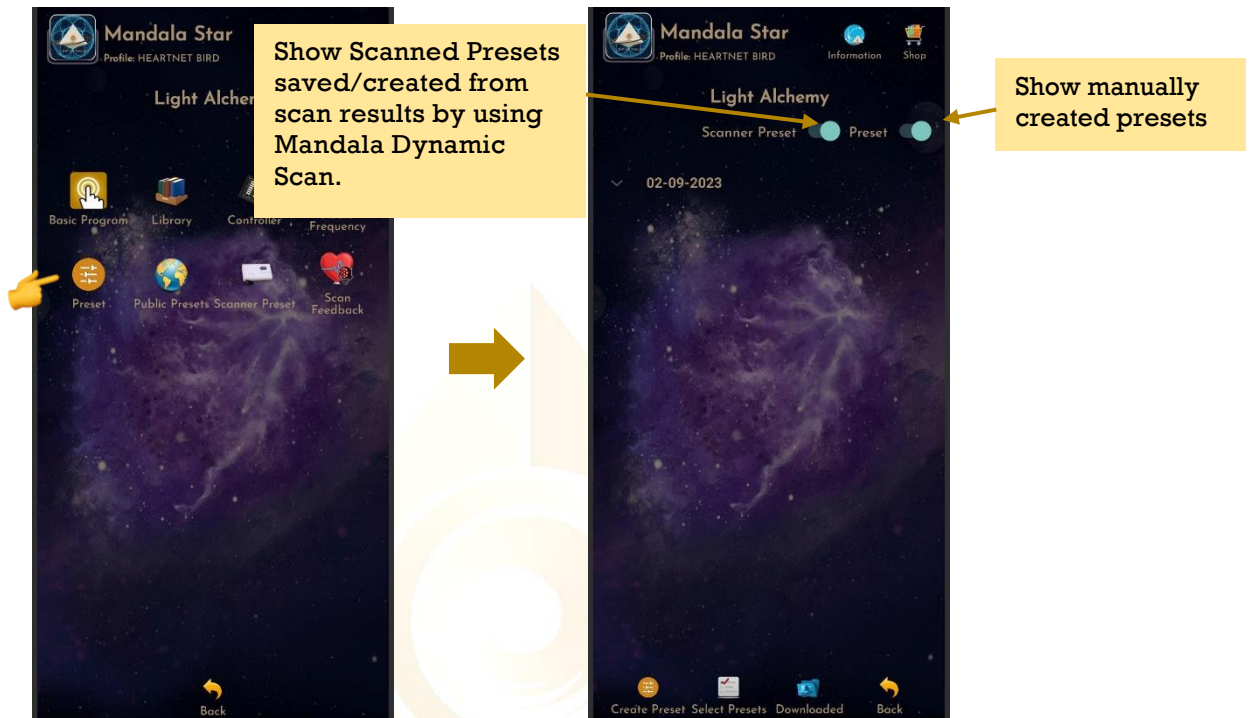
Arsenic (74.92 Hz)	0:2
Mercury (200.59 Hz)	0:6
Terbium (158.93 Hz)	0:9
Cerium (140.12 Hz)	0:8
Thulium (168.93 Hz)	0:3
Holmium (164.93 Hz)	0:4
Samarium (150.36 Hz)	0:5
Neodymium (144.24 Hz)	0:3
Promethium (145 Hz)	0:1
Erbium (167.26 Hz)	0:1
Lysine (4236 Hz)	0:4
Tryptophan (2458 Hz)	0:5
Glutamic Acid (3624 Hz)	0:9
Threonine (3262 Hz)	0:7
Leucine (4226 Hz)	0:4
Cysteine (4357 Hz)	0:9
Glutamine (97176 Hz)	0:5
Methionine (4361 Hz)	0:4
Helium (4 Hz)	0:5
Neon (20.18 Hz)	0:4

Integrated Scan: Scan all selected libraries and combine the scan results into one Scanned Preset.



6.6 Preset

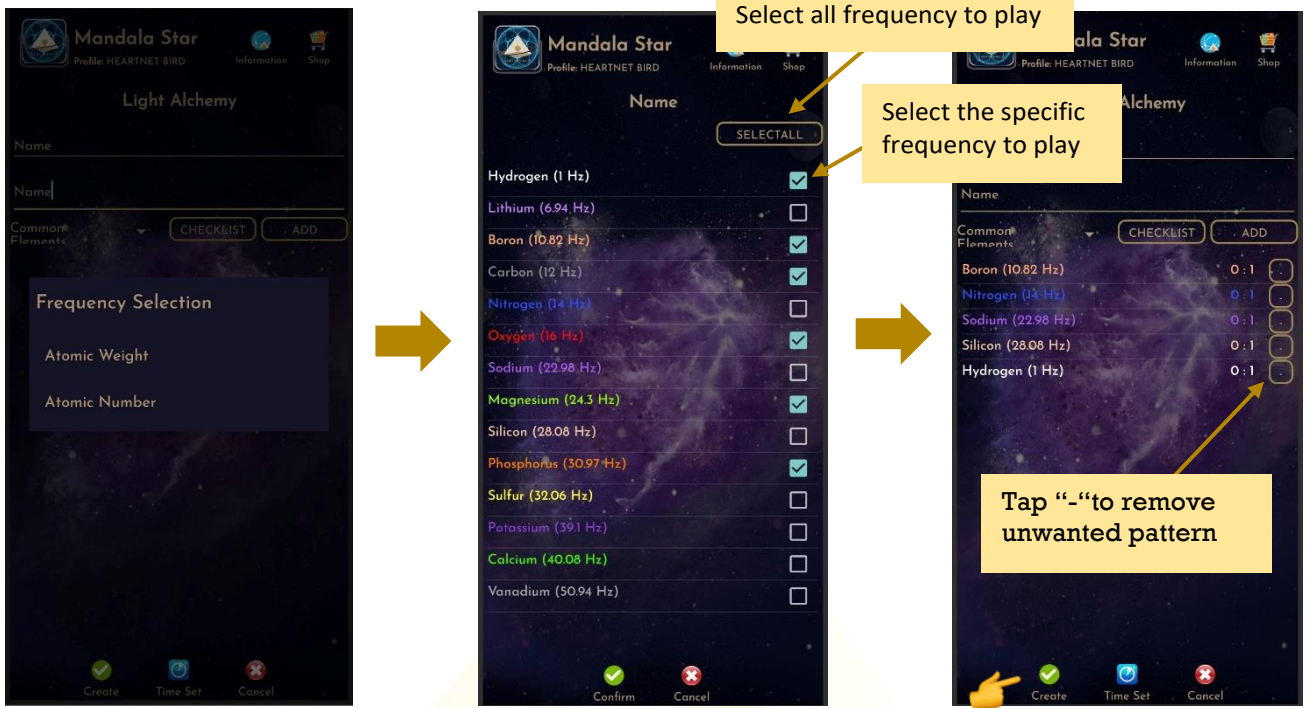
Tap on **Preset** and it will bring you to **Preset Home Page**.



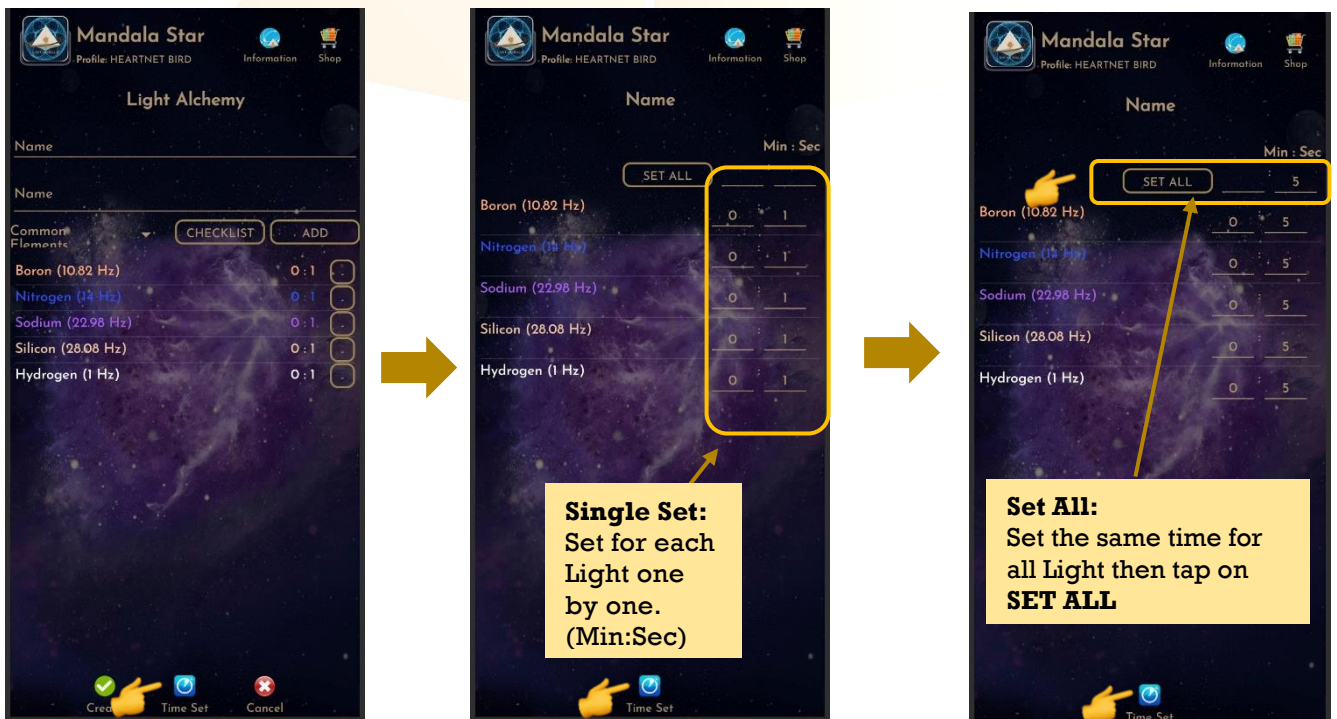
6.6.1 Create Preset

Users can manually create/customize their own presets. When the user is done with the frequency preset setup, tap on **Create** to save it.

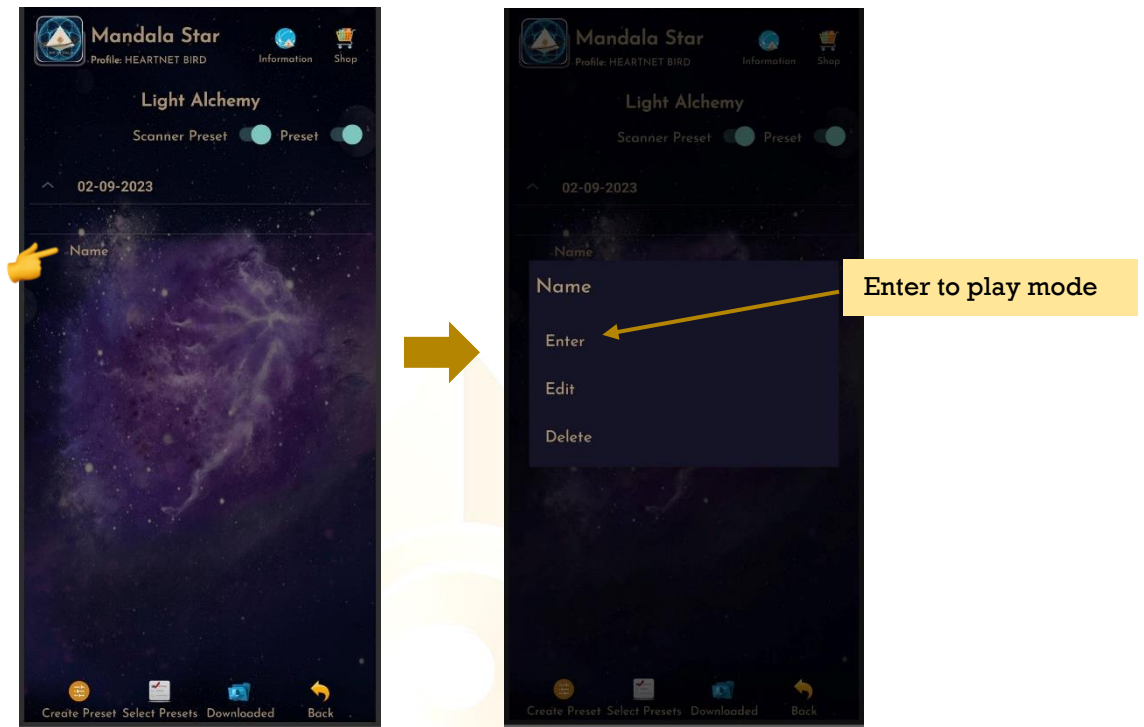




Preset Play Time Setup: Users can customize the play time for each light by tap on Time Set and choose the method of Single Set or Set All. When the time is set, user can tap on Time Set again to save it.

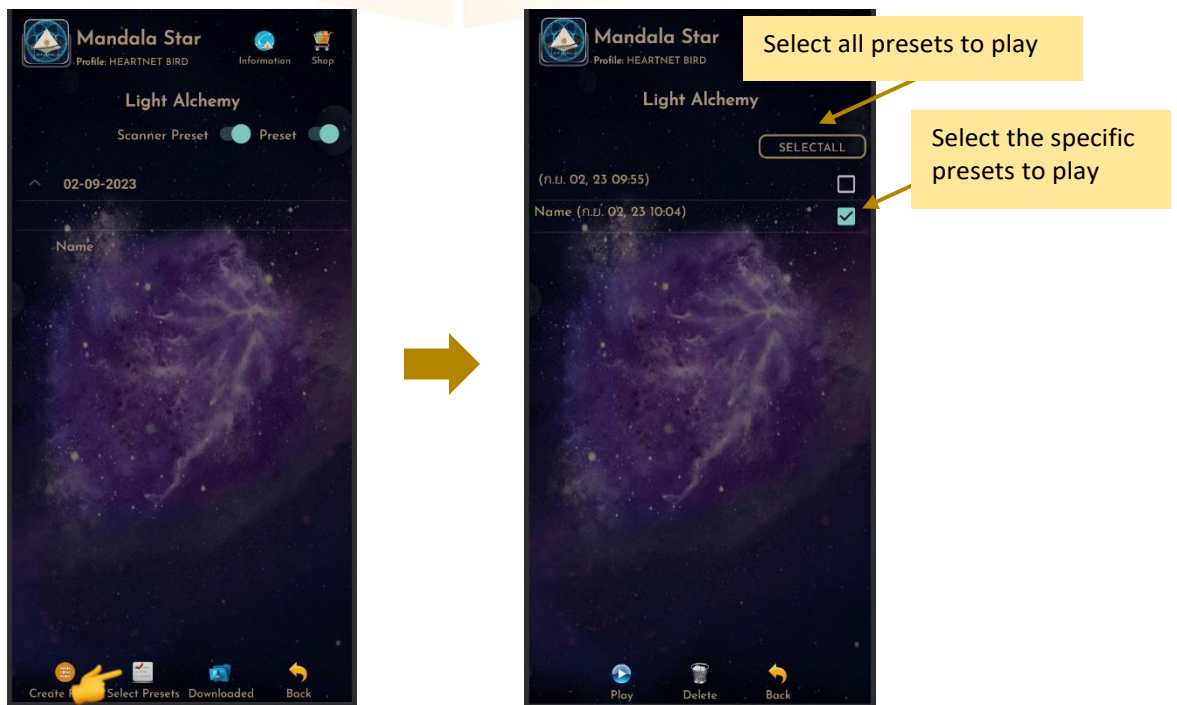


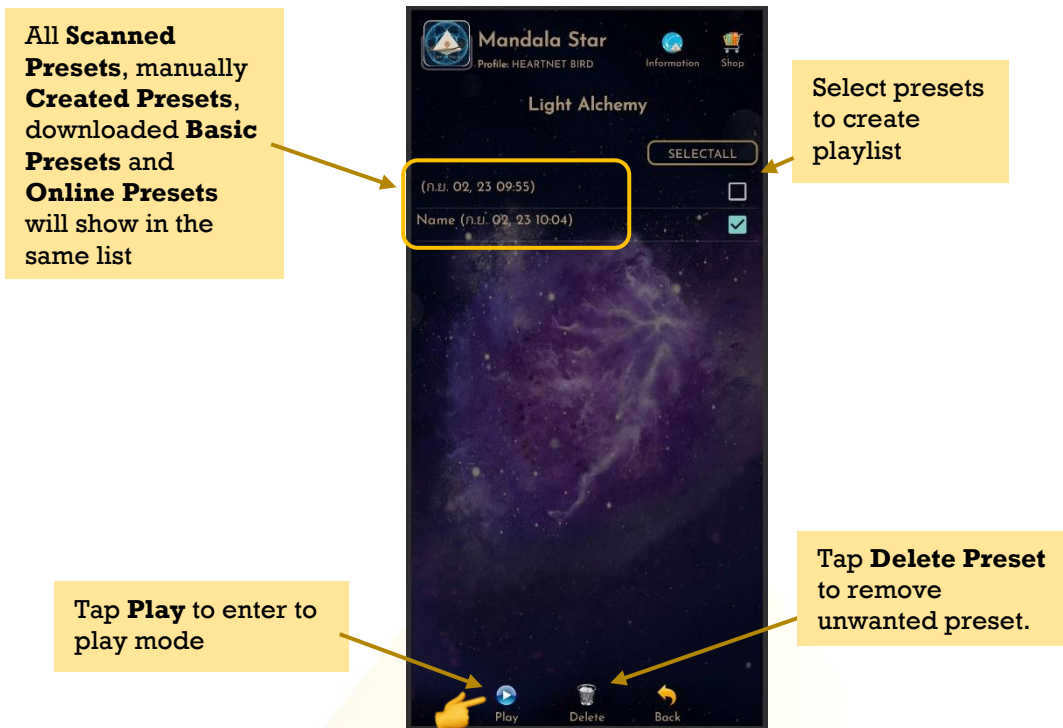
Tap on any preset in the Preset Home Page you wish to play. Then, tap on **Enter** to play the preset.



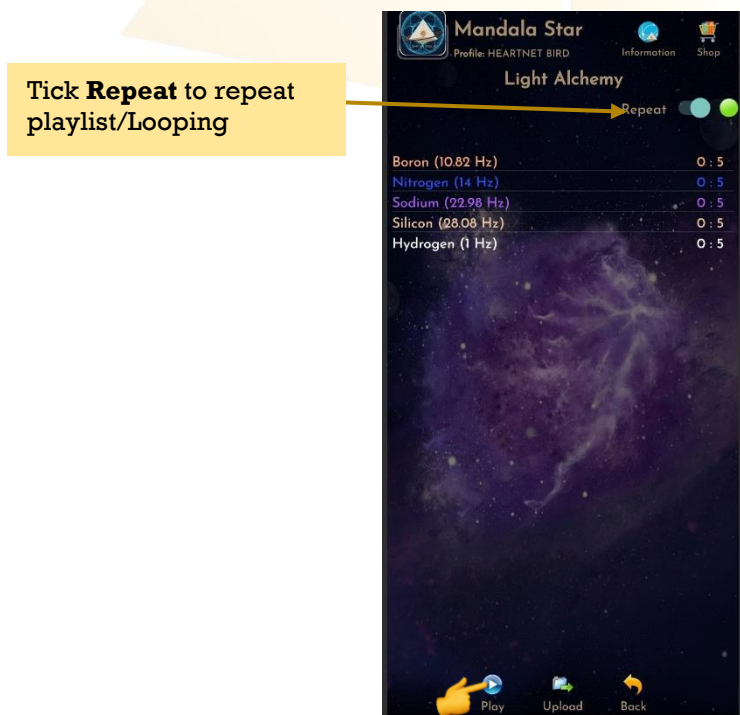
6.6.2 Play Multiple Presets:

Tab on Select Presets to create a Preset Playlist to play together. Users can select presets from Scanned presets, Created Presets or Downloaded Basic Preset and Online Preset.

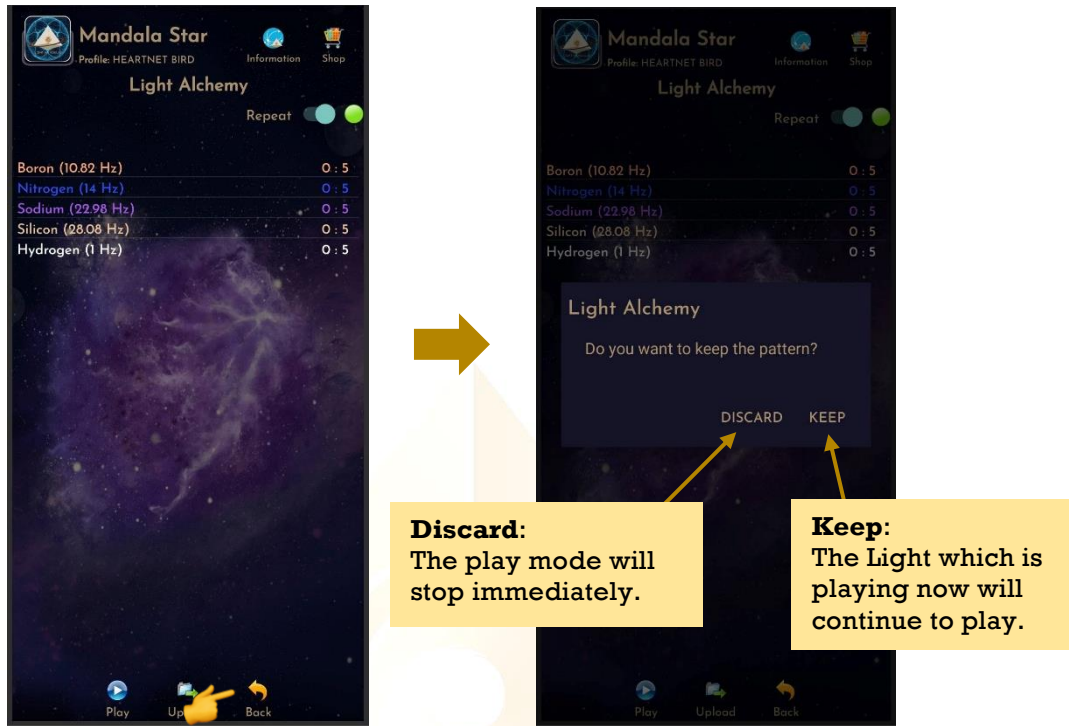




Tap play to play the created playlist.



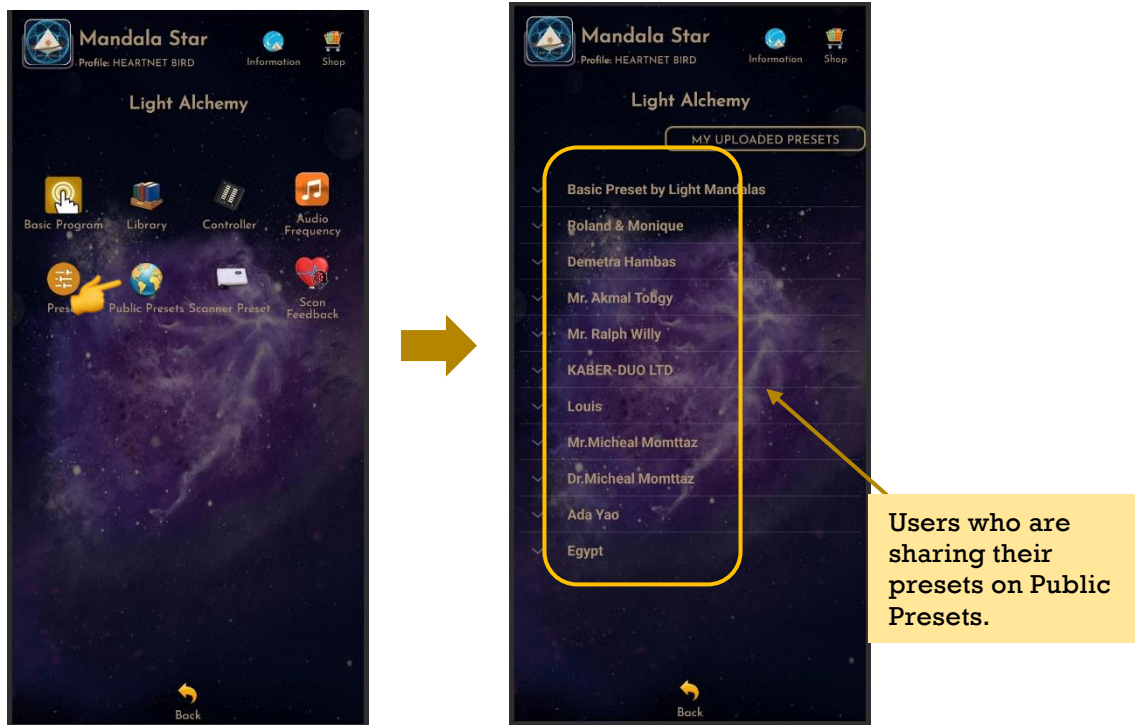
Users can tap **Back** to go back to the previous page if wish to recreate the playlist.



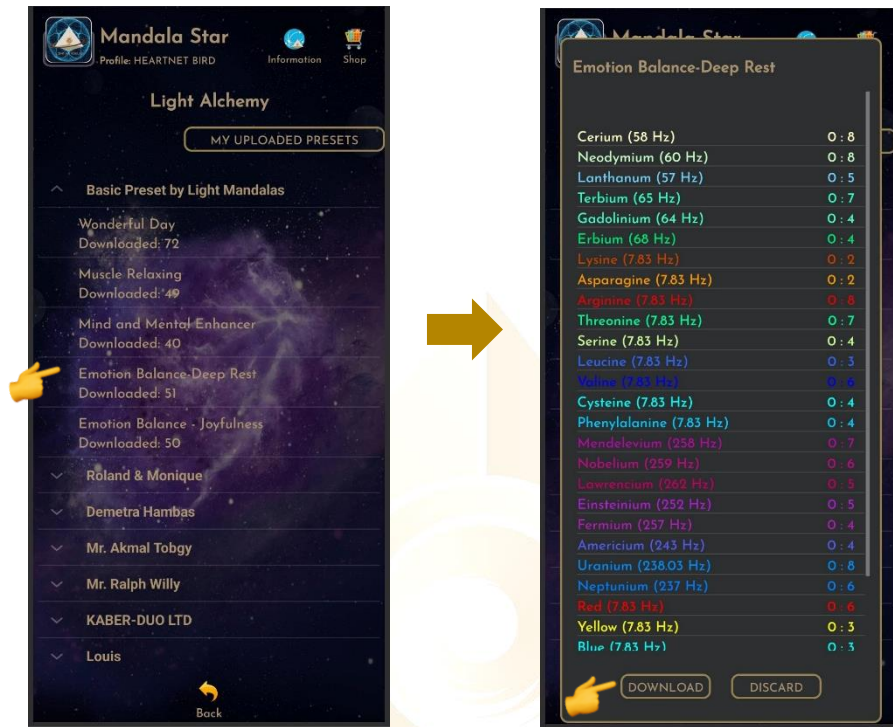
6.7 Public Presets

Users can download presets shared by other users in **Online Presets** mode. Users can also upload their preset online and share with other Light Mandalas user.

1. Download Preset:

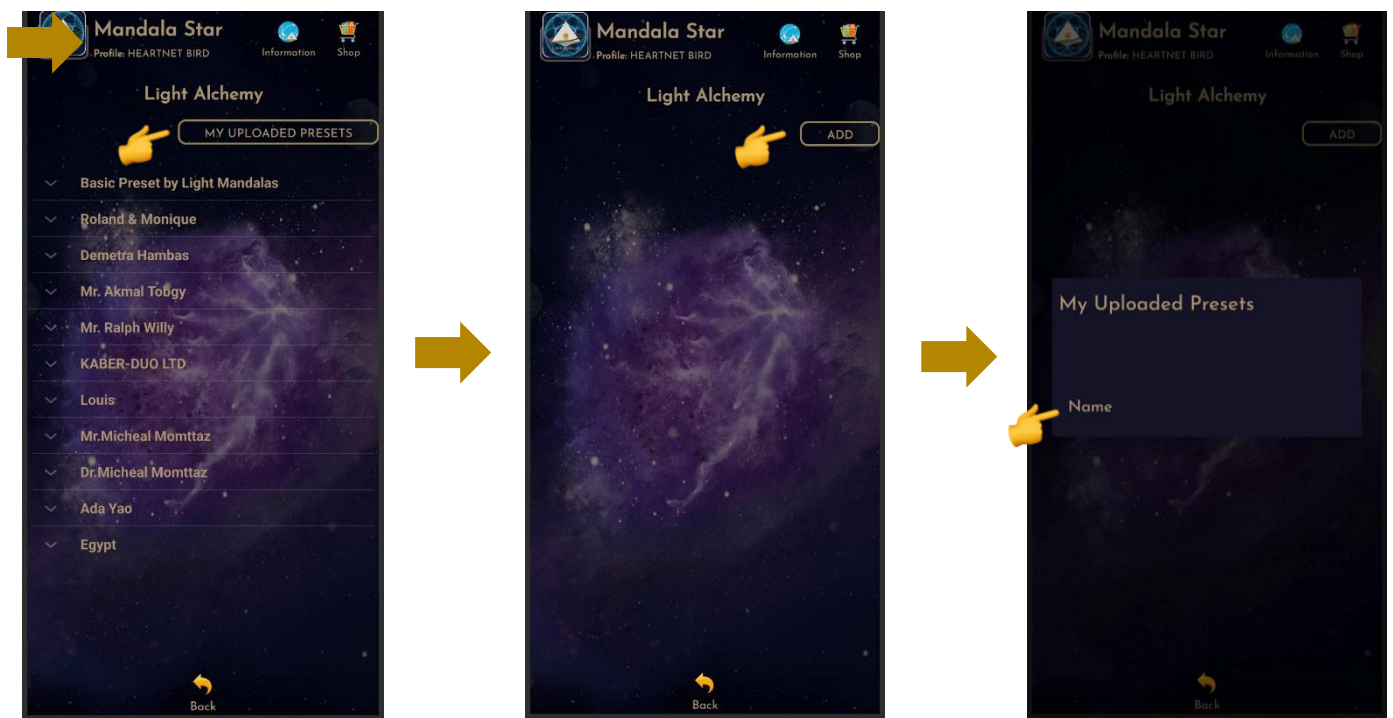


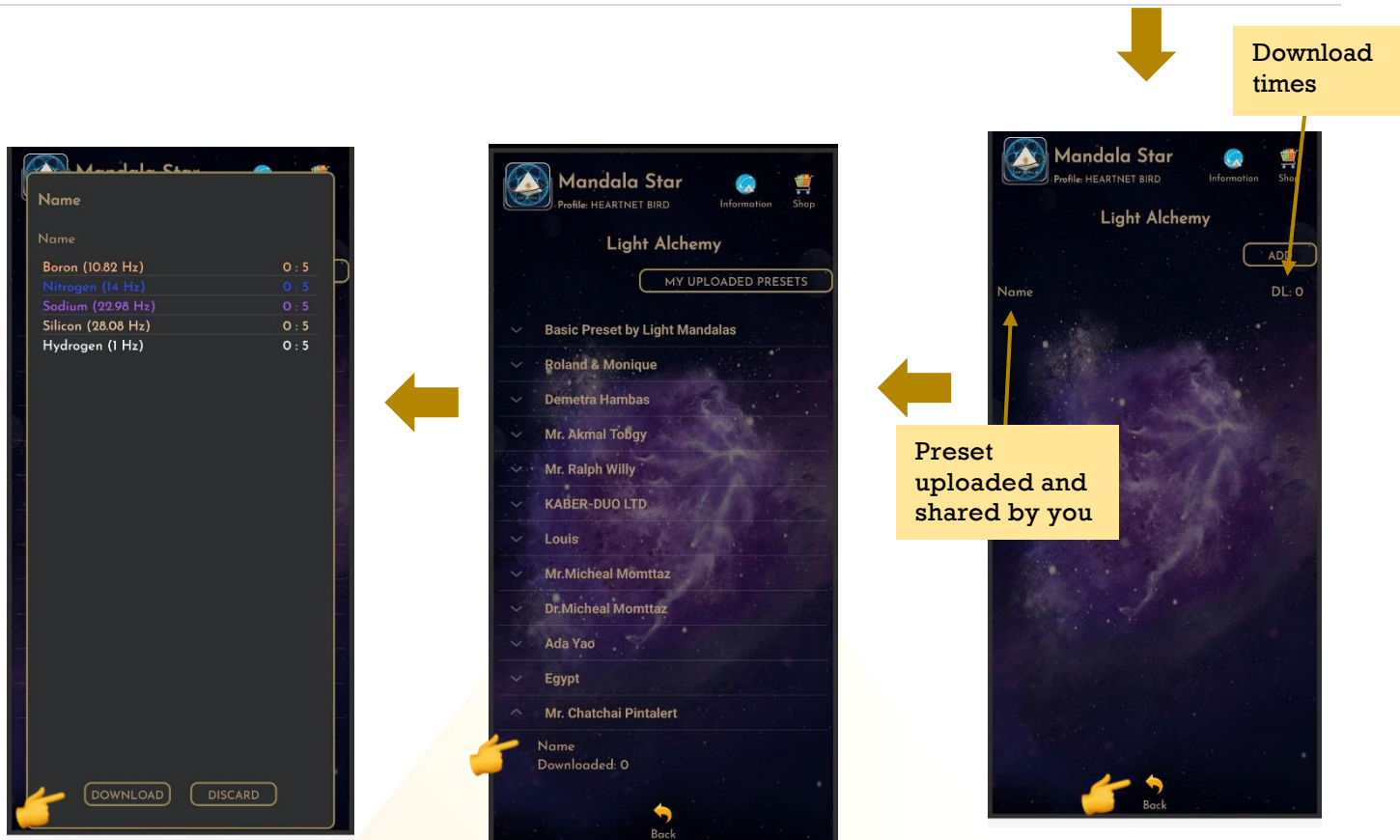
To download the online preset, tap on the user's name to see what presets they are sharing. Then tap on the preset you want to download for more information and choose **Download**.



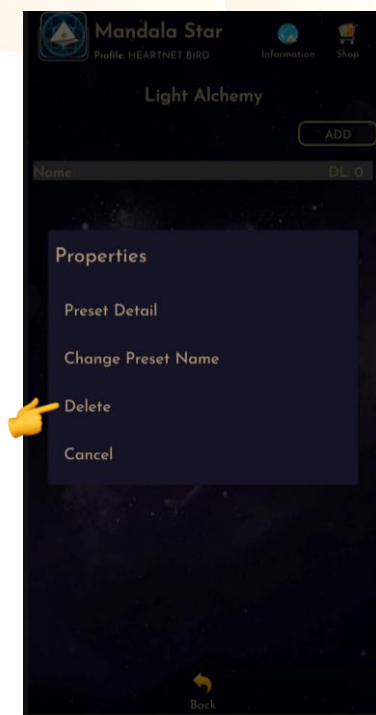
2. Upload Preset:

For upload preset, tap on **My Shared Presets**, then tap on **Add** and choose the preset you wish to upload from the presets you have created earlier.





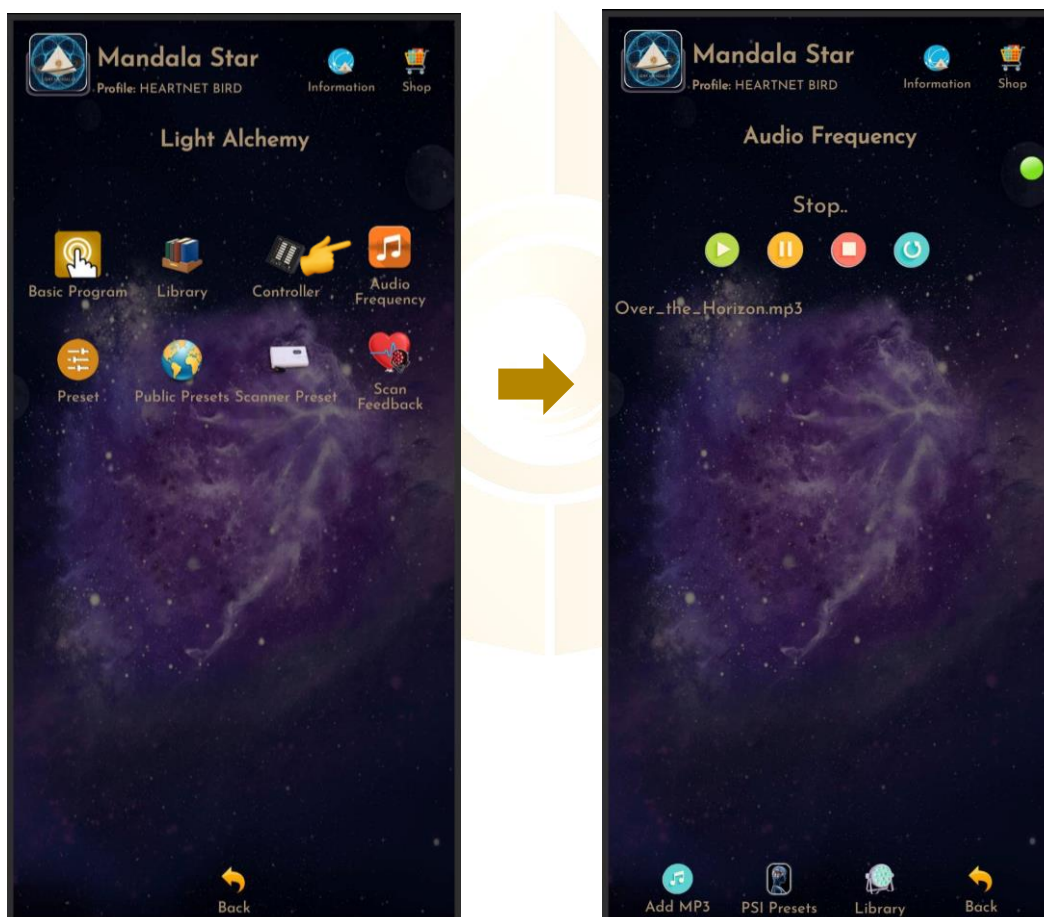
To delete shared preset, tap to hold on the preset and choose **Delete**.



6.8 Audio Mode

In this mode, users can **Add** and **Play Music** from the tablet. Users can enjoy both **Pulsing Light Therapy** and **Music Therapy** at the same time. The light will pulse according to the music playing.

1. To do this, please make sure the headset is plugged into Light Alchemy (please refer to Mandala Light Alchemy Pulsar User Manual for headset setup instruction). Go back **Light Alchemy Pulsar main page** and go into Audio Frequency.

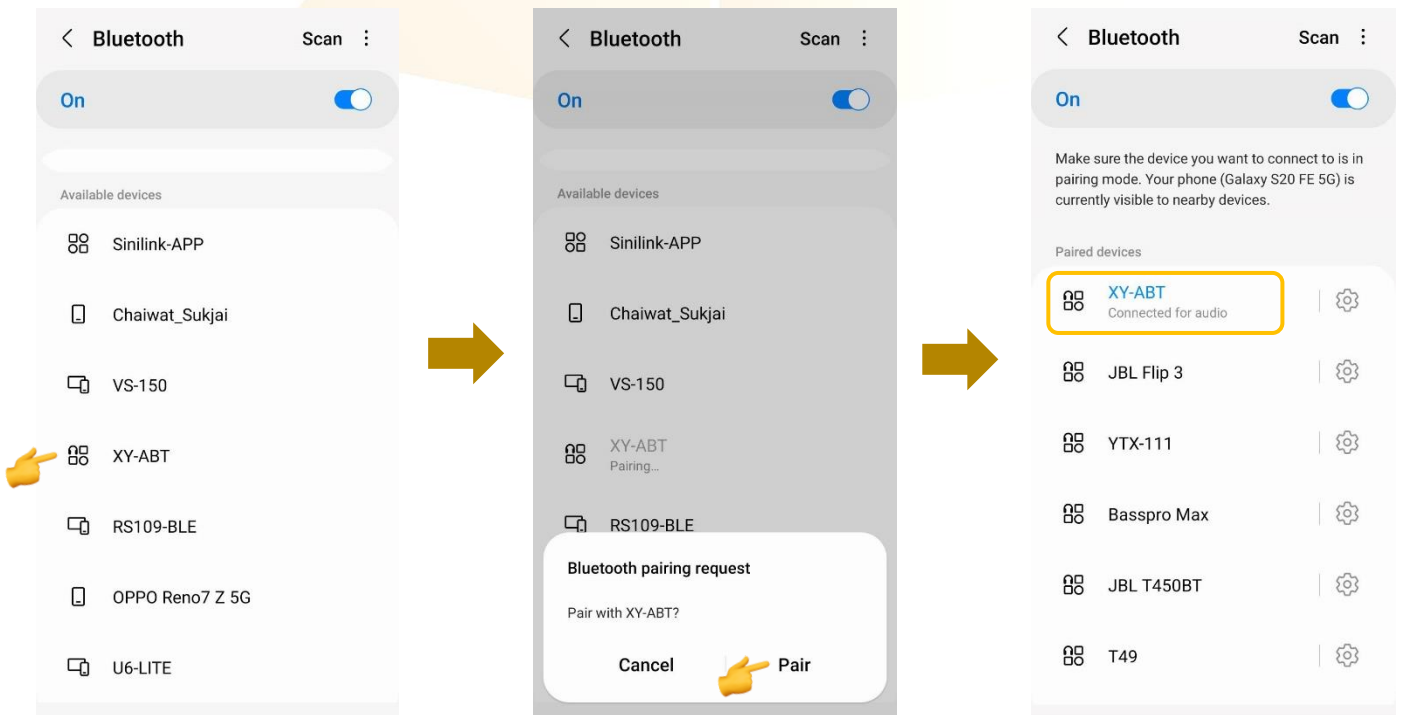


2. When the headset name “XY-ABT” appears in the Bluetooth setting, tap on it and then select **PAIR** to pair it.

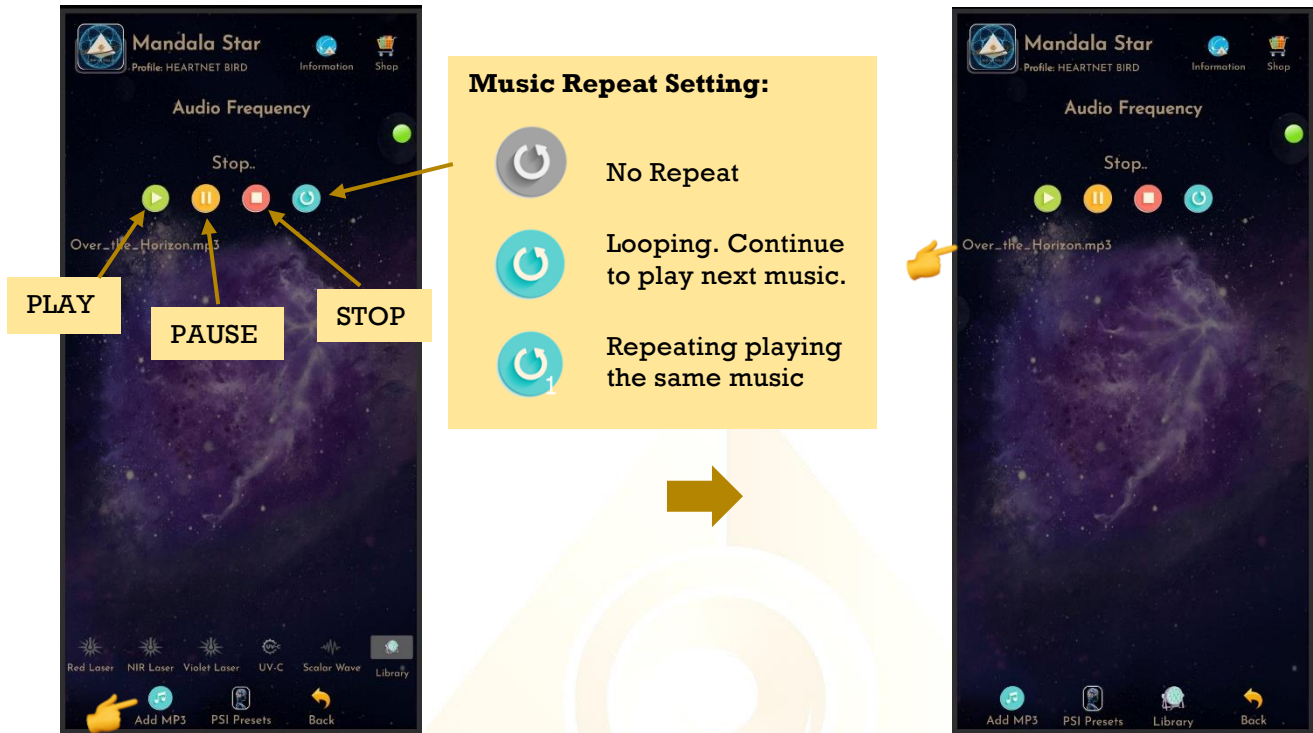
** User only need to pair the headset name for the first-time use of headset. The headset name will then save in the paired devices list. So, users don't need to set the paring again during the next use.*



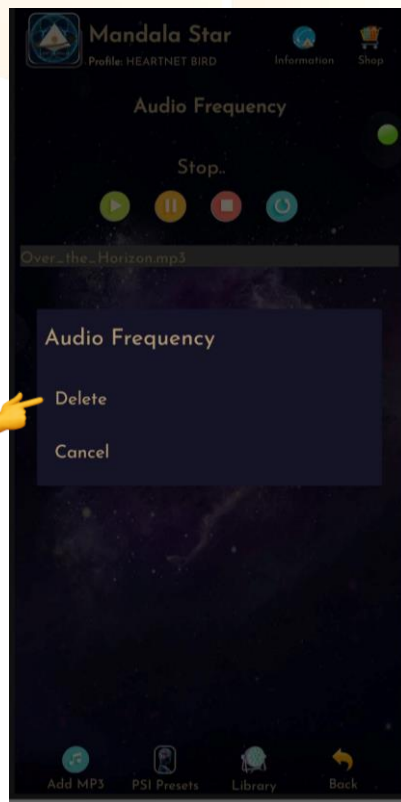
Press the button to change to the Audio Mode (LED will be orange)



3. Tap on **Add** to add in music you wish to play, then tap on the music name to **Play** it.



To delete the music, tap and hold on the music name, then tap **Delete**.



When the music is played, the user can go to Preset Library to play preset or play specific light from the Main Library. Now, the light should pulse according to the music playing.

Disclaimer

All content found on the Light-mandalas.com Website, Facebook Page, YouTube, including: text, images, video, audio, or other formats are intended for informational, educational and research purposes only and neither Light Mandalas Co. Ltd. nor the publishers of this content take responsibility for possible health consequences of any person or persons reading or following the information in this educational content and is not intended to be a substitute for professional medical advice, diagnosis, treatment or cure. Always seek the advice of your physician or other qualified health professionals with any questions you may have regarding a medical condition.

“No claims other than stress detection and stress reduction may be made”

Light Mandalas products are to be used as a Heart Rate Variability Biofeedback system and Light, Color and Sound therapy, designed for stress detection and stress reduction only. The devices do not evaluate any issue other than stress. Stress can come from many sources; this system uses light and color and sound therapies to reduce stress. Remember, there has never been any reported side effects using light, color and sound therapy anywhere in the world and throughout time.

Notes on the practices of low-level laser therapy (LLLT) and Biofeedback

Low-level laser therapy (LLLT) is considered investigational by the FDA, and no medical claims of cures are permitted in the US; at this time however, low-level lasers are defined within the scope of complimentary medical practices such as physiotherapy, aesthetic, Traditional Chinese Medicine and acupuncture, etc.

The FDA does not regulate Bio resonance tools but they do regulate biofeedback tools and some Bio resonance tools are registered under this category.

*It is a legal requirement at this time that the user does not make any medical claims of diagnosis or cure.

Precaution

Light Mandalas products are working on energetic level. The standard benefit is energy clearance. During the process, your body and mind can be uncomfortable. The symptoms associated with overly rapid clearance of toxins. If those detox symptoms are too strong, you may need to stop using the products. You have to allow the clearance or detox to proceed and you can start to try the products afterwards. However, if the issues still remain the same, it may need to be completely discontinued for your own safety

Shall there be any inquiry, please contact us for further support.

Light Mandalas Co., Ltd. (Thailand Headquarters):

- **Light Mandalas Website:** www.light-mandalas.com
- **Official:** info@light-mandalas.com
- **Instagram:** [@mandalawave9](https://www.instagram.com/mandalawave9)
- **YouTube Channel:** Light Mandalas Official
- **Technical Support Email:** cservice@light-mandalas.com

Local agents contacts:

- **Japan:** japan@light-mandalas.com
- **Taiwan:** lovelight777888@gmail.com
- **Indonesia:** lightseed2020bali@gmail.com
- **West Malaysia:** lightworker@healingtech.org
- **East Malaysia:** malaysia@light-mandalas.com
- **Hungary:** horesnyibela@light-mandalas.com
- **Switzerland, Germany, Austria and the Netherlands:** info@light-mandalas.ch
- **France, Spain:** france-spain@light-mandalas.com
- **USA:** usa@light-mandalas.com
- **New Zealand, Australia:** tachyonhealing.nz@gmail.com