

Mandala Star App

User Manual

Mandala Violet Shield



Please read the manual before using the tools.

Version 2.0

Table of Contents

1	<i>Android Device Requirement</i>	2
2	<i>Mobile Application End-User License Agreement</i>	3
3.	<i>Application Download and Installation</i>	4
4.	<i>Mandala Star Application Main Page Features</i>	7
4.1	<i>Basic Mode and Advance Mode</i>	8
5.	<i>Application Setup</i>	9
5.1	<i>Application Activation</i>	10
5.2	<i>Application Settings</i>	11
5.2.1	<i>Bluetooth Connection Setup:</i>	11
5.2.2	<i>General Setting</i>	12
5.2.3	<i>Mandala Dynamic Scan Setting</i>	13
5.2.4	<i>Light Alchemy Pulsar Setting</i>	13
6.	<i>Mandala Violet Shield</i>	14
6.1	<i>Library</i>	14
a.	<i>Preset</i>	14
6.2	<i>Create Preset</i> User can create preset by following this step	15
6.3	<i>Public Presets</i>	19
i.	<i>Download Preset</i>	19
6.4	<i>Scanner Function</i>	20
i.	<i>Pre Scan</i>	20
6.5	<i>Controller</i>	23
6.6	<i>Audio Mode</i>	24

1 Android Device Requirement

Mandala Star application can only be operated with **Android mobile phone or tablet.**

Minimum requirement:

Operating System: Android OS
Android version: Android 12 or above
Others: with Bluetooth and WIFI function



2 Mobile Application End-User License Agreement

Please read this Mobile Application End-User License Agreement (“EULA”) carefully before downloading or using the Mandala Star App mobile application (“the application”). This EULA governs your use of the application, which will allow you to access Light Mandalas library and control Light Mandalas tools by your mobile device. Your use of the application indicates your consent to this EULA.

1. **License.** Light Mandalas Co., Ltd. grants you a revocable, non-exclusive, non-transferable, limited license to download, install, and use the application for your personal and internal business purposes strictly in accordance with this EULA

2. **Your Account.** Your use of the application requires that you have an account with Light Mandalas.

3. **Changes to this EULA.** Light Mandalas reserves the right to modify this EULA. Your continued use of the application after Light Mandalas publishes notice of changes to this EULA indicates your consent to the updated terms.

4. **No Included Maintenance and Support.** Light Mandalas may deploy changes, updates, or enhancements to the application at any time. Light Mandalas may provide maintenance and support for the application, but has no obligation whatsoever to furnish such services to you and may terminate such services at any time without notice. You acknowledge that Google has an obligation to furnish any maintenance and/or support services in connection with the application.

5. **Acceptable Use.** You agree that you will not use or encourage others to use the application in a way that could harm or impair others’ use of the Mobile App.

6. **Privacy.** Light Mandalas don’t collect your information from your application. Information inside the application will be private.

7. **No Warranty.** Your use of the application is at your sole risk. The application is provided on an “As Is” and “As Available” basis. Light Mandalas expressly disclaims all warranties of any kind.

8. **Suspension and Termination of the application.** Light Mandalas reserves the right to suspend or terminate your access to the application at any time.

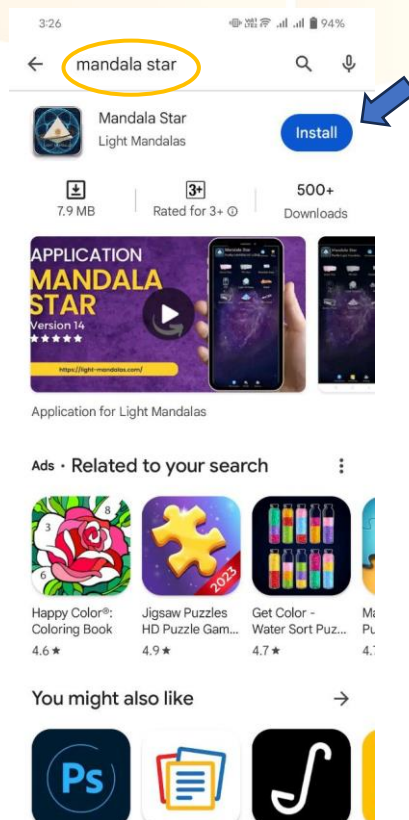
9. **Intellectual Property Rights.** In the event of a third-party claim that the application, or your possession and use of the application, infringes third party’s intellectual property rights, Light Mandalas, will be solely responsible for the investigation, defense, settlement and discharge of any such intellectual property infringement claim.

3. Application Download and Installation

1. Users can download Mandala Star app from **Google Play Store**.

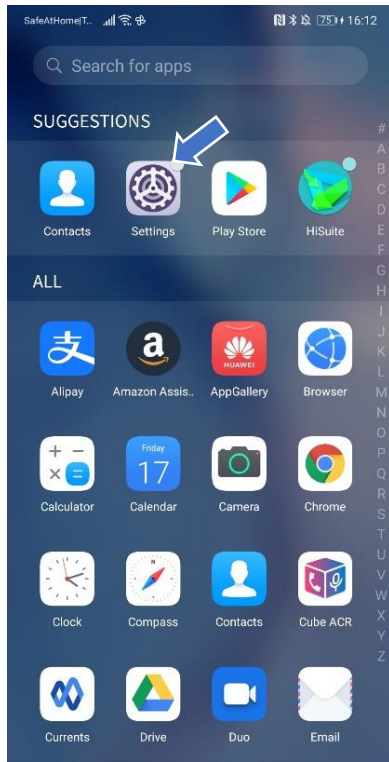


2. In “**Google Play Store**” try to search “**Mandala Star**”, and click to install the APP.

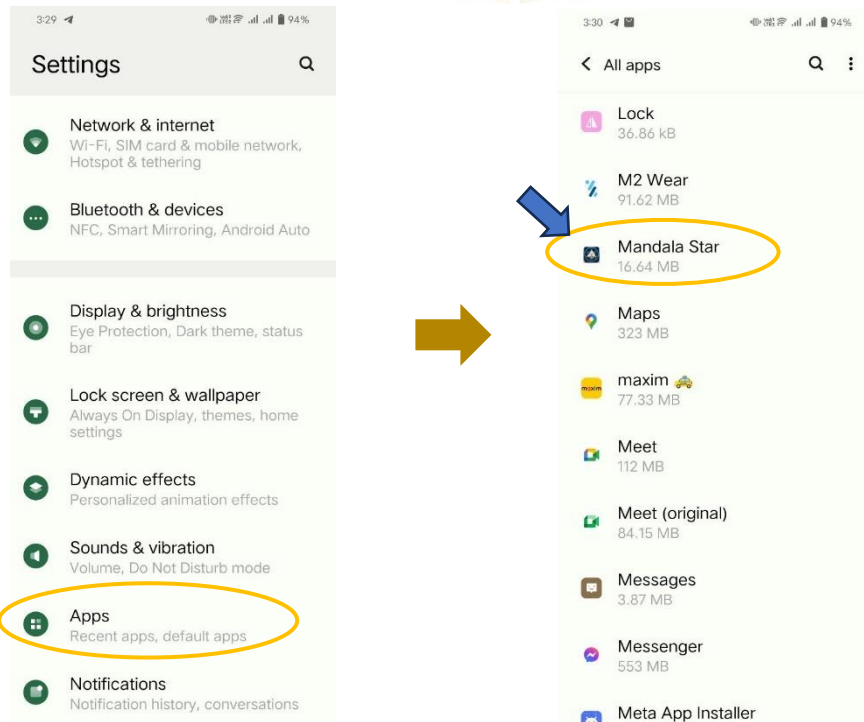


3. Allow permissions for Mandala Star APP

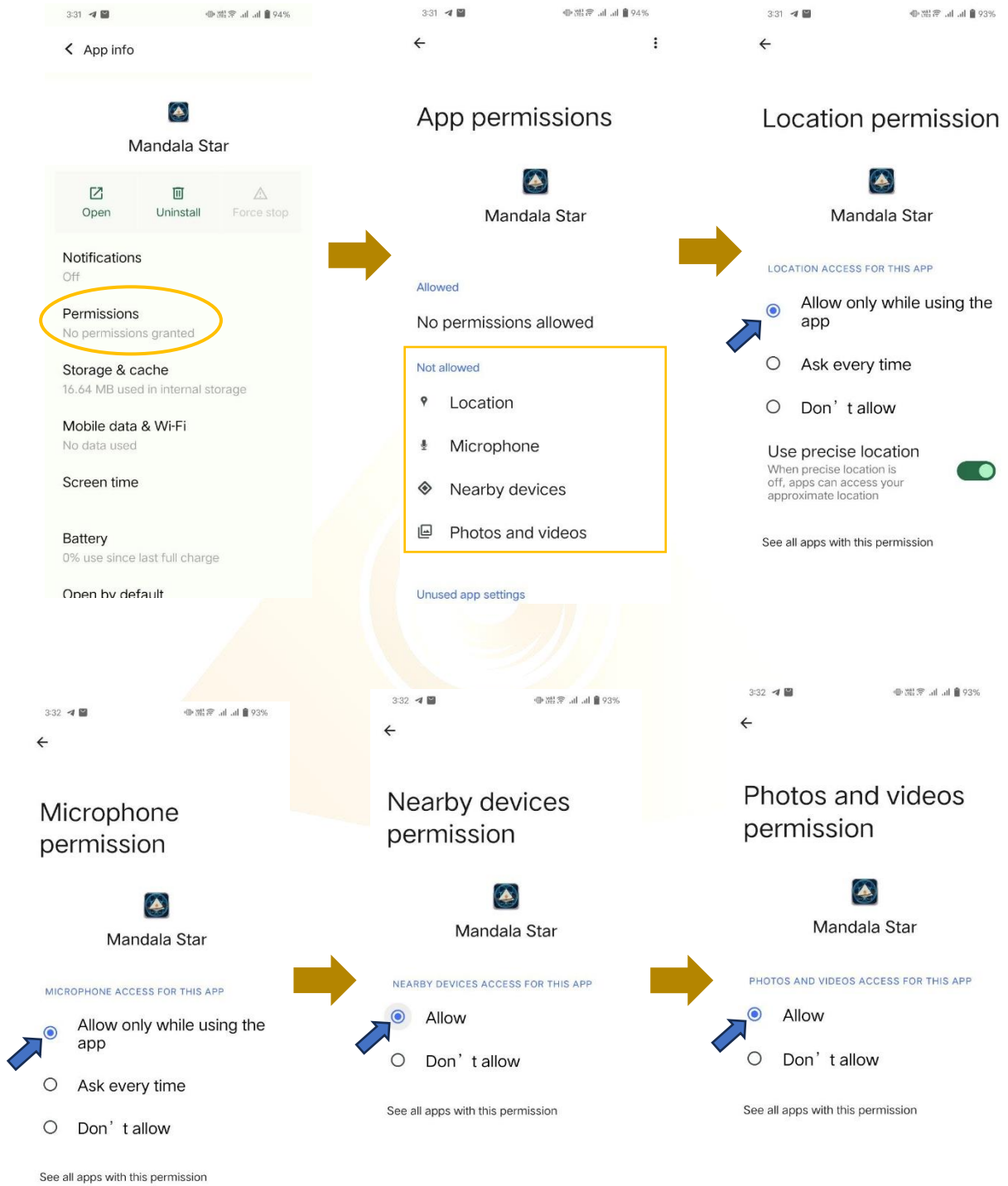
a. Go to Tablet Settings



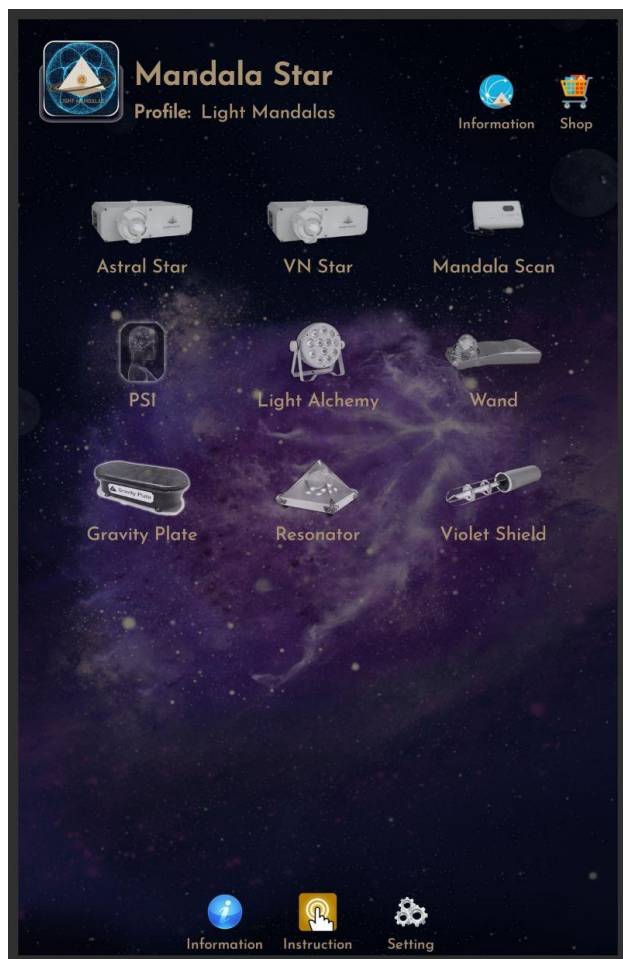
b. Go to “Apps” in the setting.



c. Tap on “Permissions” and click allow permission in each of function.



4. Mandala Star Application Main Page Features



Programs 1 to 9 on Light Mandalas devices correspond to specific functions, allowing users to select the appropriate program for their desired operation.

1. Mandala Astral Star

2. Mandala VN Star

3. Mandala Scan

4. Psycho Spiritual Integration – PSI

- PSI library has to be purchased prior to use this program.
- Must use with Mandala Scan.

5. Mandala Light Alchemy Pulsar

6. Mandala Wand

7. Gravity Plate

8. Mandala Resonator

9. Mandala Violet Shield

11. Information: Provide the user with the latest application update information.

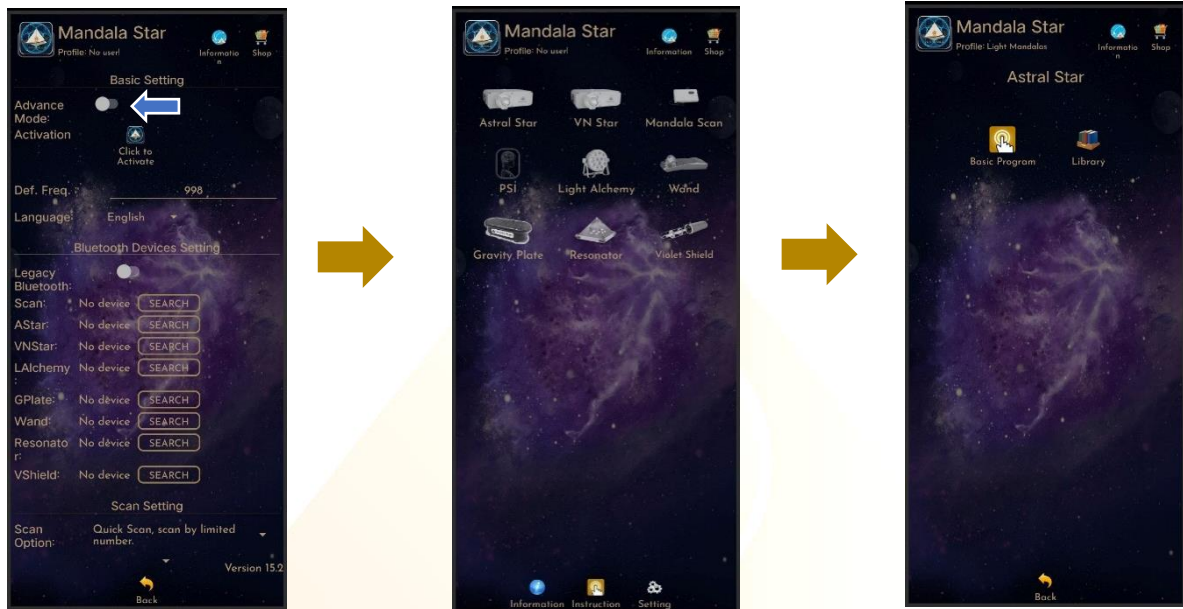
12. Instruction: Provide video manuals for the user.

13. Setting: Application Setting – Bluetooth Pairing, Mandala Scan Setting, Light Alchemy Setting, Language setting, Database refresh and Activation Code Release

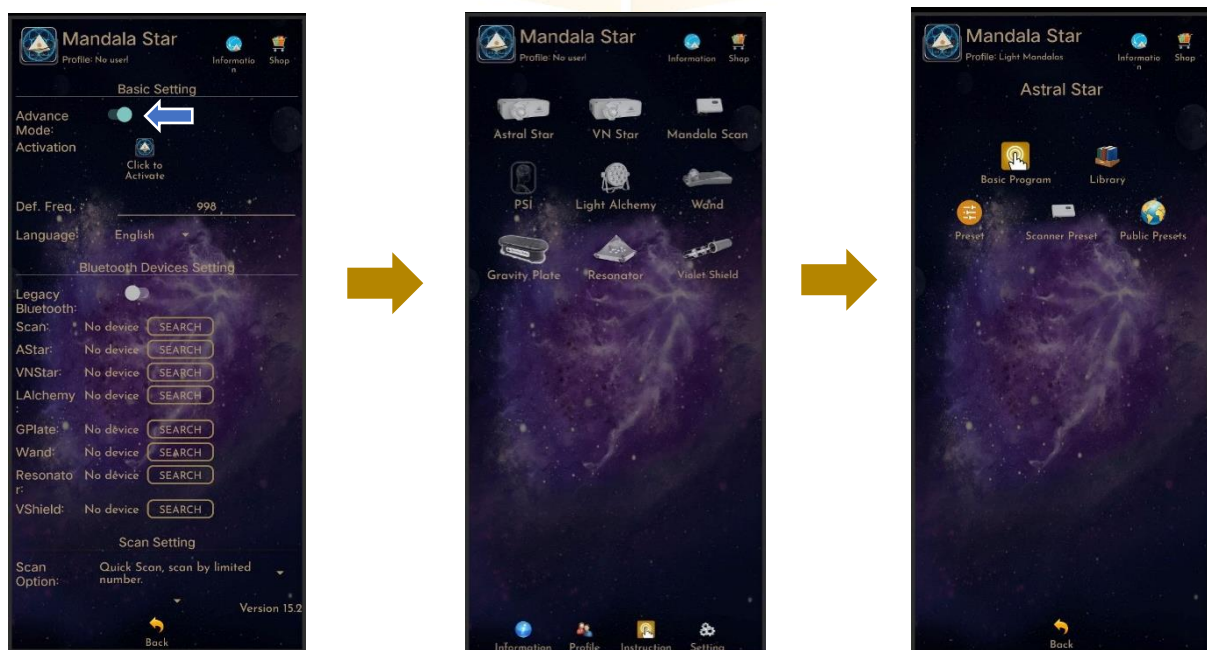
4.1 Basic Mode and Advance Mode

Users can select Basic Mode and Advance Mode from the APP setting. Basic Mode allows the beginner to use the basic programs and enjoys the basic healing. In Advance Mode, users can customize the frequency on their own and enjoys other features with the healing programs.

a. Basic Mode



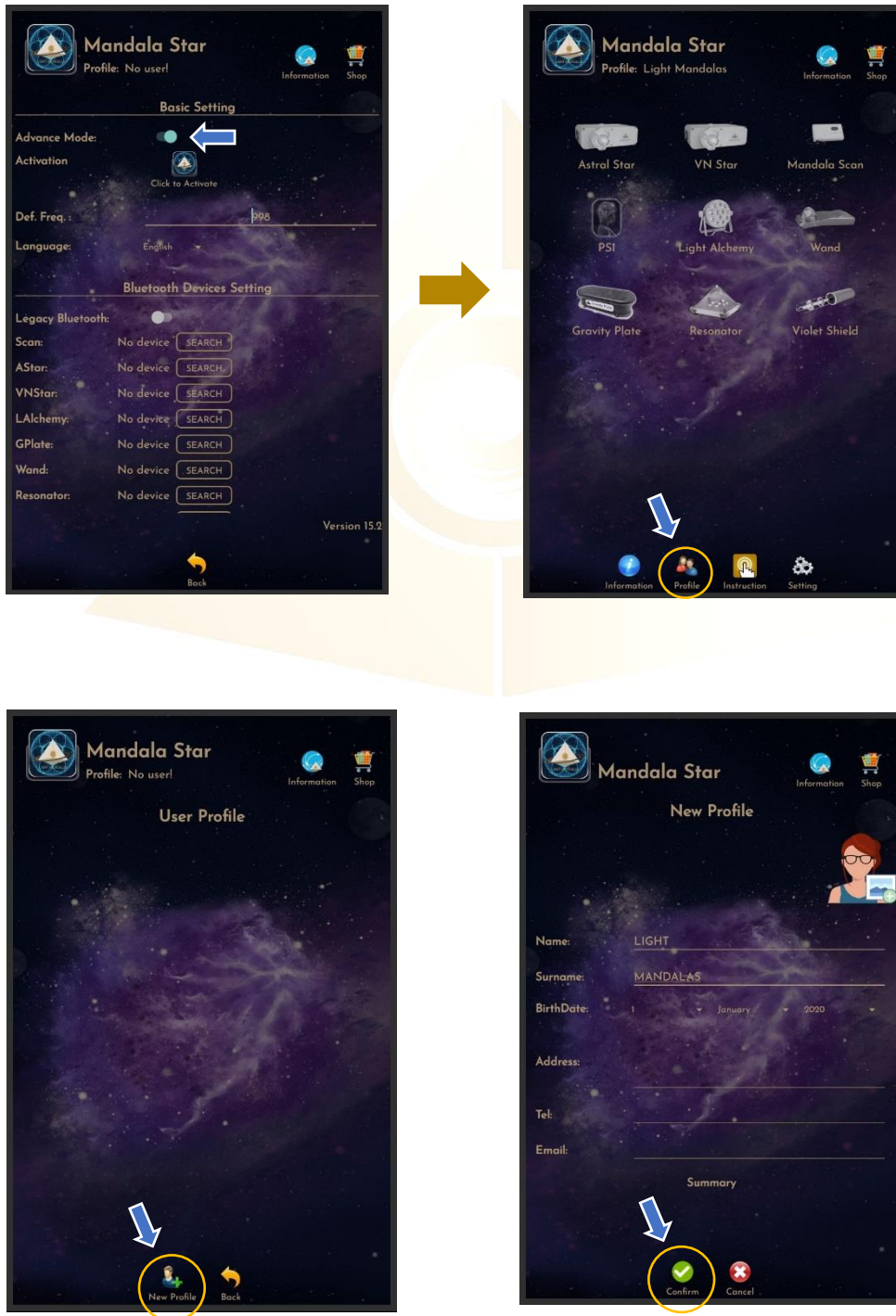
b. Advance Mode



5. Application Setup

Once the user turns on Advance Mode from the APP setting, “User Profile” will prompt up on the Home Page to add new user profile and it can add the picture profile as well. The user’s name will appear on the Home Page.

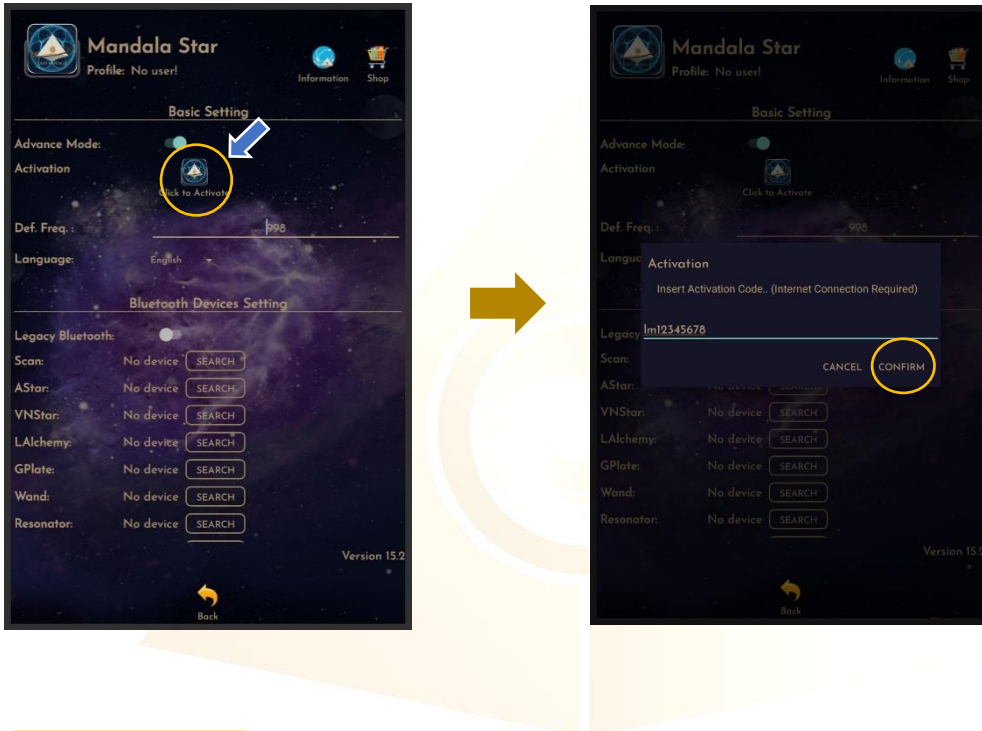
Users can add more another user by tapping on “User Profile” to insert other users’ information.



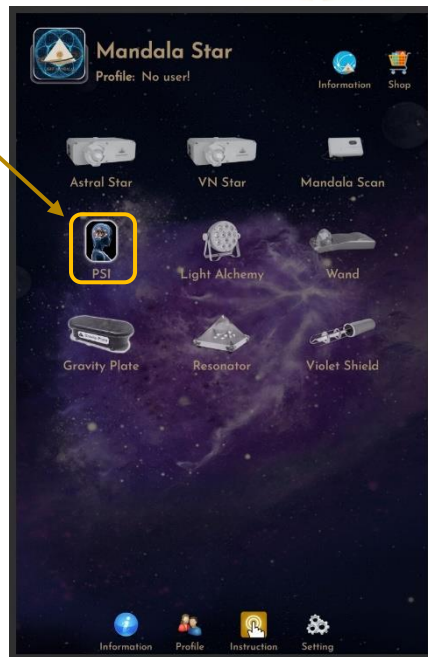
5.1 Application Activation

Users have to tap on the icon “Click to Activate” to activate the APP and use the programs. Insert the activation code with small letter of “lm” and tap confirm.

****User has to purchase for the libraries and can request activation code from the dealer/local agent.***



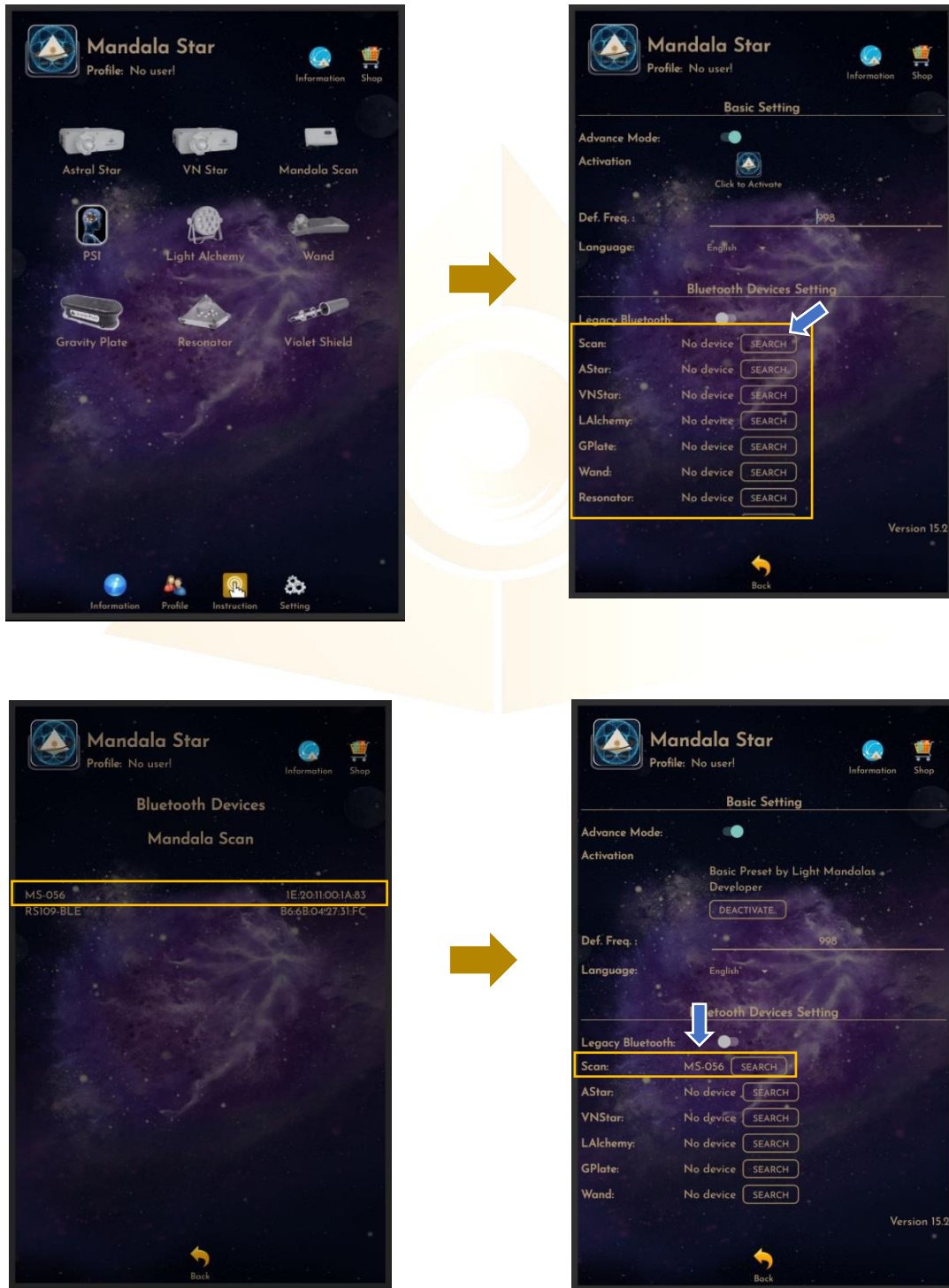
The PSI icon will turn to color if the customer has purchased the PSI library.



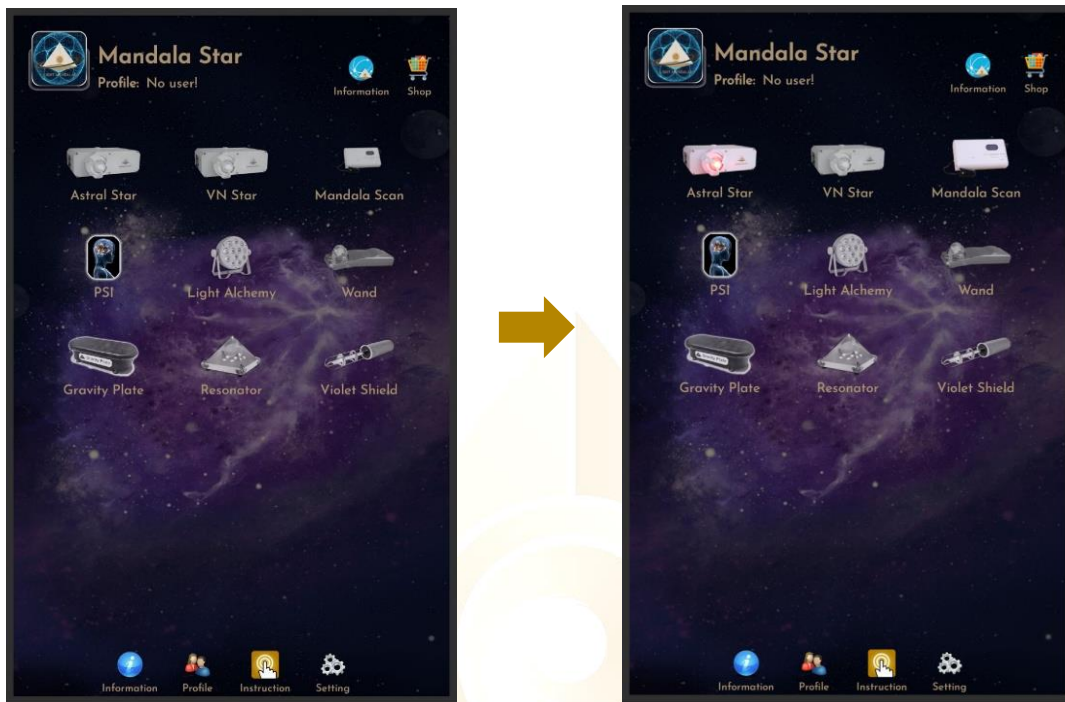
5.2 Application Settings

5.2.1 Bluetooth Connection Setup:

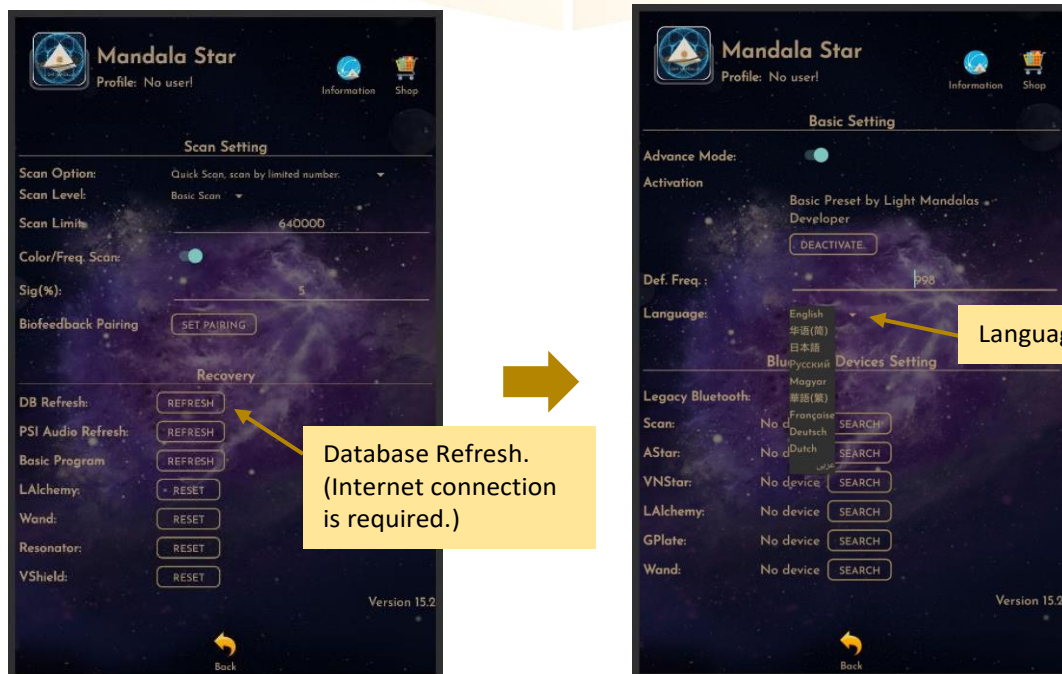
1. Go to the Mandala Star application “**Setting**”, tab on the device which you want to pair with and click “Search” to pair Bluetooth with Light Mandalas device.



2. The icon of the device on the Home Page will turn to color when APP is pairing Bluetooth with Light Mandals devices.



5.2.2 General Setting



5.2.3 Mandala Dynamic Scan Setting

Scan Level:

1. Basic Scan: scan from Blue to Green state.
2. Deep Scan: will scan only on green state.

Scan Option:

1. Quick Scan: scan by limited number
2. Advance Scan and Bio Matrix Scan: scan by human body coherence. (Unlimited number of scan)

Color/Freq. Scan:

Color Scan for Astral Star and VN Star:

Turn on: different colors preset scan results.
Turn off: white color preset scan results.

Freq. Scan for Light Alchemy Pulsar:

Turn on: different frequency preset scan results.
Turn off: default frequency preset scan results.

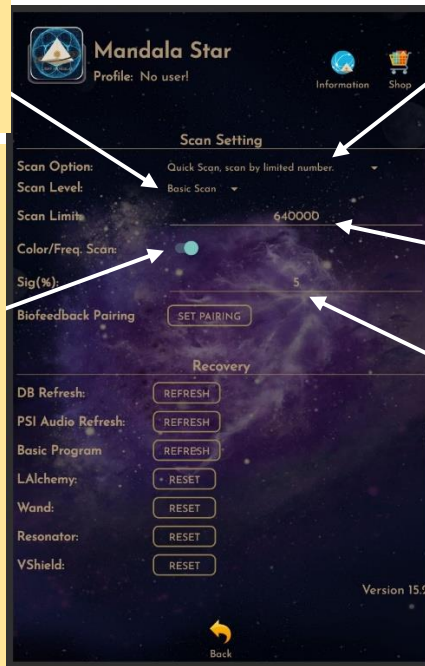
Freq. Scan for Mandala Wand:

Turn on: different color preset and laser scan results.
Turn off: no color preset and all laser ON (FULL) scan results.

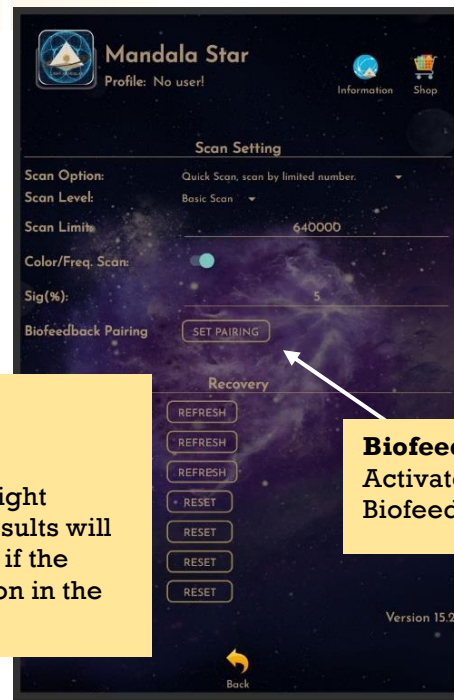
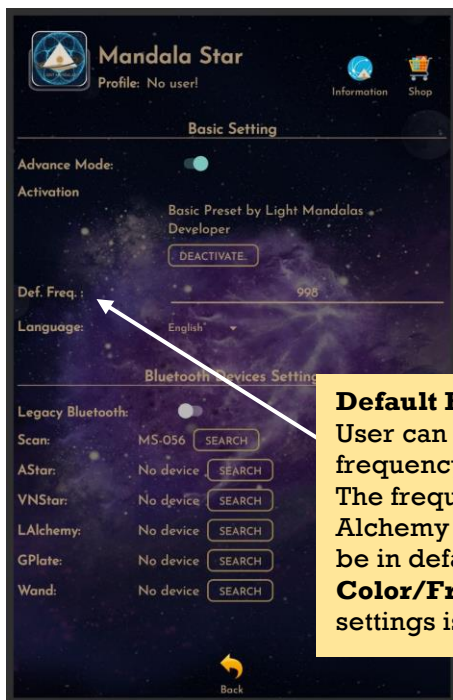
Scan Limit:

Set the scan numbers for Quick Scan.

Sig. (%): the significant of the scan result that focus on.



5.2.4 Light Alchemy Pulsar Setting



Default Frequency:
User can set the default frequency at here. The frequency for the Light Alchemy Pulsar Scan results will be in default frequency if the **Color/Freq. Scan** option in the settings is unticked.

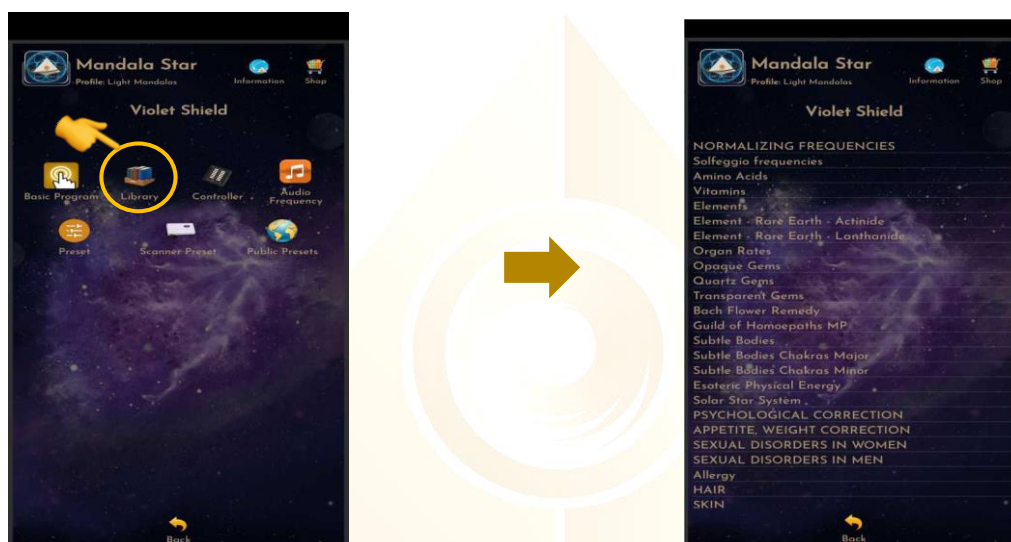
Biofeedback Pairing:
Activate and deactivate Biofeedback function.

6. Mandala Violet Shield

Tap on the “**Violet Shield**” icon in the **Mandala Star Application Main Page** then you will go to **Violet Shield Home Page**.

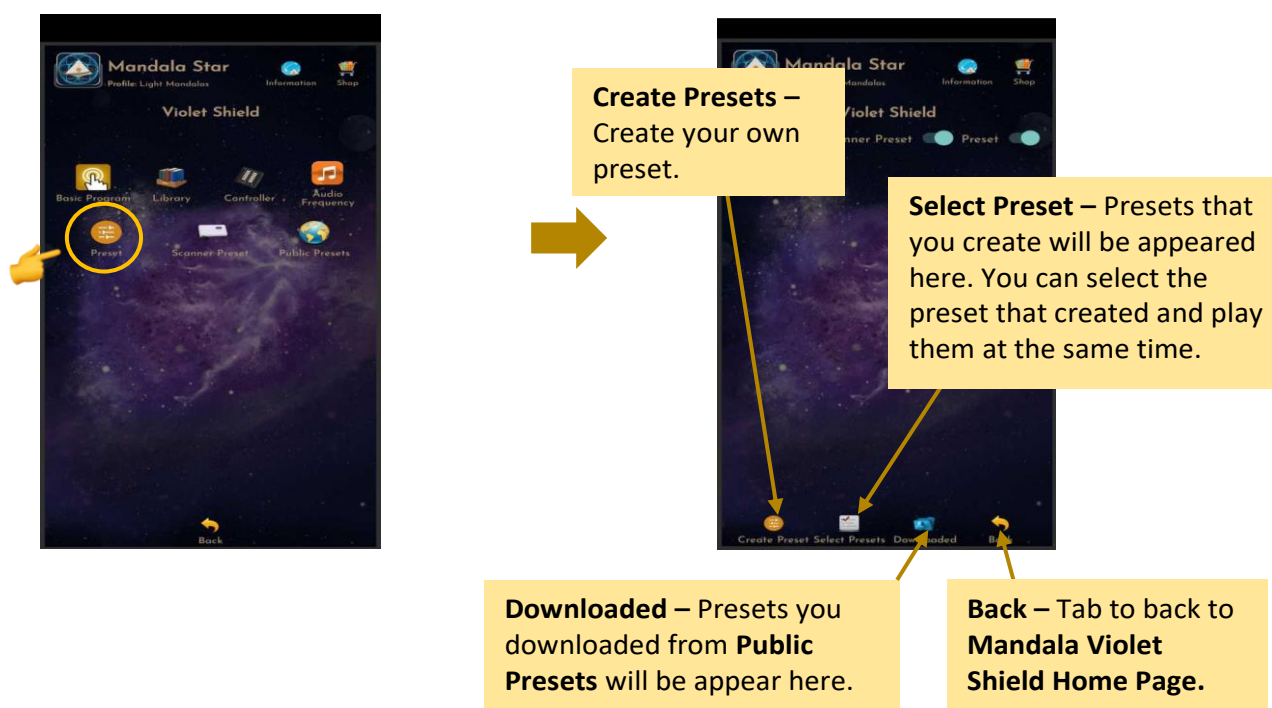
6.1 Library

To play the light directly from **Library**, tap on “**Library**”, then select a program that you would like to play.



a. Preset

Tap on **Preset** and it will bring you to **Preset Home Page**.



6.2 Create Preset

User can create preset by following this step.

a. Create name, description and select programs.

Time Set:
Set period (min:sec) for each frequency to play

Insert Preset name

Insert Preset description

Checklist – Add multiple frequency together at the same time.

Add – Add single frequency.

Frequency Library Drop List

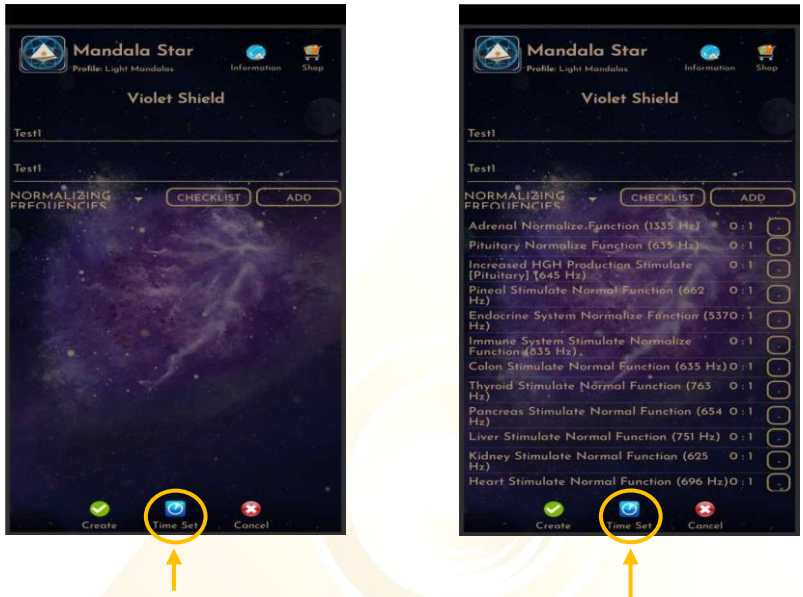
CHECKLIST

ADD

Function	Frequency	Selected
Adrenal Normalize Function	1335 Hz	<input type="checkbox"/>
Pituitary Normalize Function	635 Hz	<input type="checkbox"/>
Increased HGH Production Stimulate (Pituitary)	645 Hz	<input type="checkbox"/>
Pineal Stimulate Normal Function	662 Hz	<input type="checkbox"/>
Endocrine System Normalize Function	537 Hz	<input type="checkbox"/>
Immune System Stimulate Normalize Function	635 Hz	<input type="checkbox"/>
Colon Stimulate Normal Function	635 Hz	<input type="checkbox"/>
Thyroid Stimulate Normal Function	763 Hz	<input type="checkbox"/>
Pancreas Stimulate Normal Function	654 Hz	<input type="checkbox"/>
Liver Stimulate Normal Function	751 Hz	<input type="checkbox"/>
Kidney Stimulate Normal Function	625 Hz	<input type="checkbox"/>
Heart Stimulate Normal Function	696 Hz	<input type="checkbox"/>
Blood Pressure Normalize	15 Hz	<input type="checkbox"/>
Nervous System Stimulate Normal Function	764 Hz	<input type="checkbox"/>

b. Time Setup

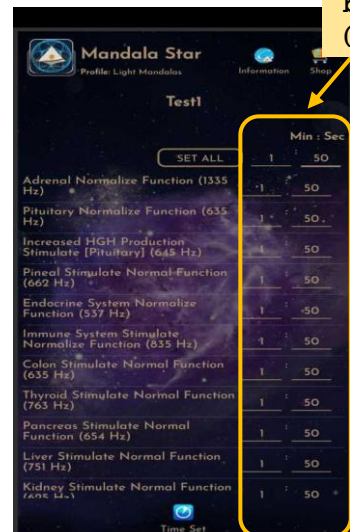
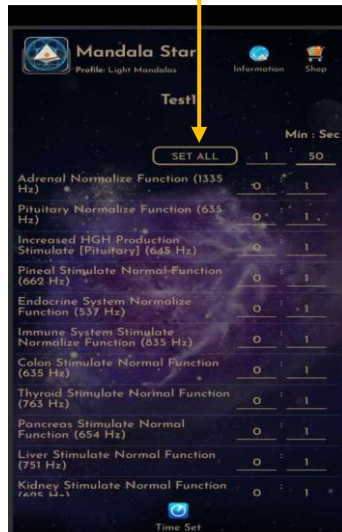
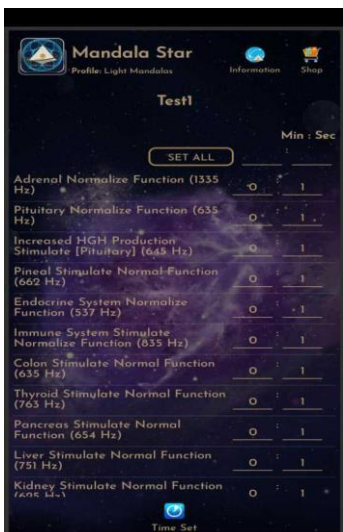
Users can customize the play time for each frequency by tapping on **Time Set** and choose the method of **Single Set** or **Set All**. When the time is set, the user can tap on **Time Set** again to save it.



Library command with set time Time Set to set the playing time.

Set All:
Set the same time for all patterns then tap on **SET ALL**

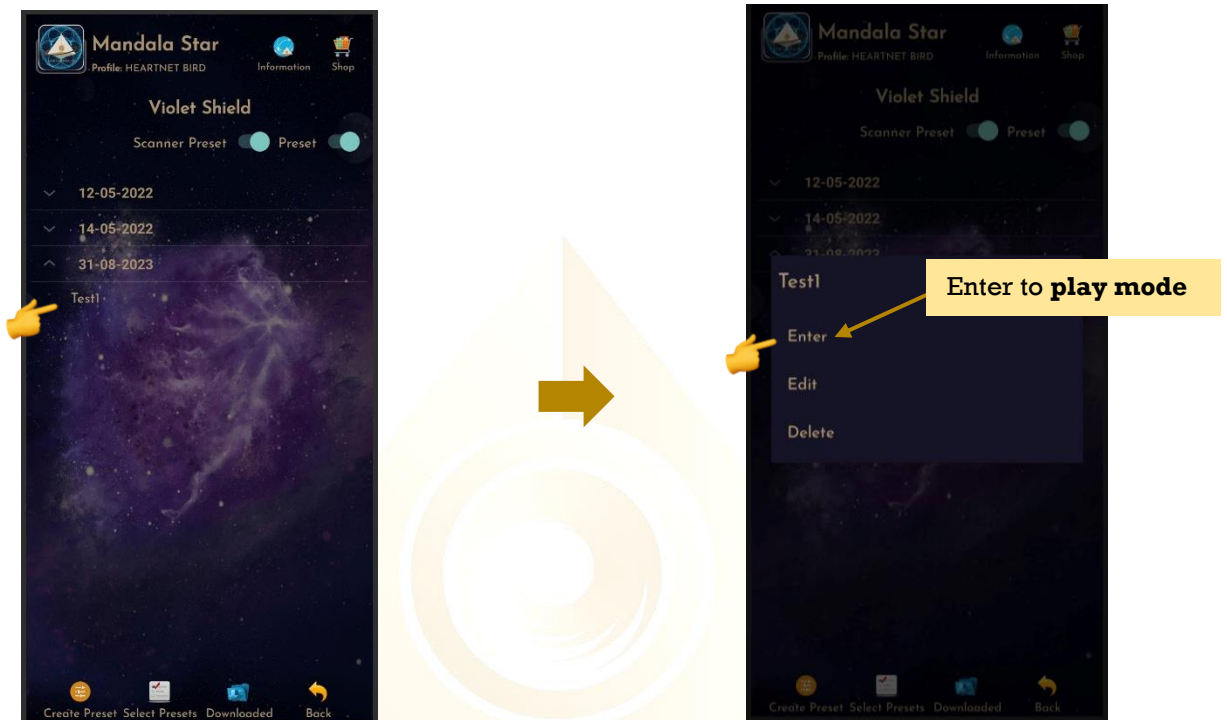
Single Set:
Set for each pattern one by one. (Min:Sec)



c. Play Mode

Select Single Preset:

Tap on any preset in the Preset Home Page you would like to play and then tap on **Enter** to enter to **Play Mode**.



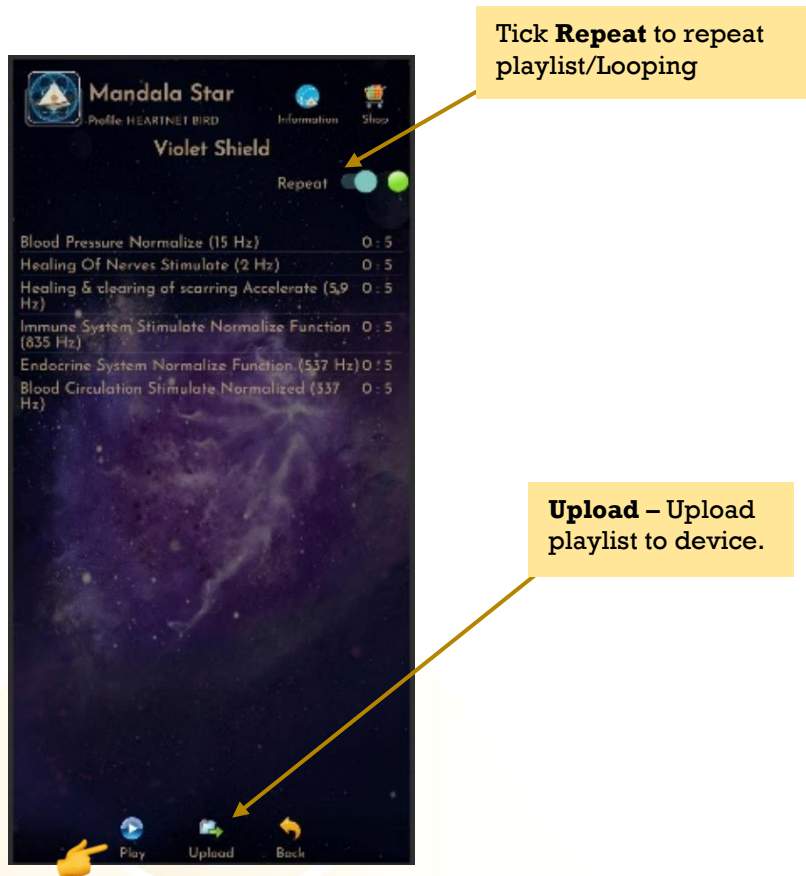
Select Multiple Presets:

Tap on **Select Presets** to create a playlist to play together. Users can select presets from **Scanned presets**, **Created Presets** or **Downloaded Basic Preset** and **Online Preset**.



Play Mode: Tap **Play** to play the created playlist.

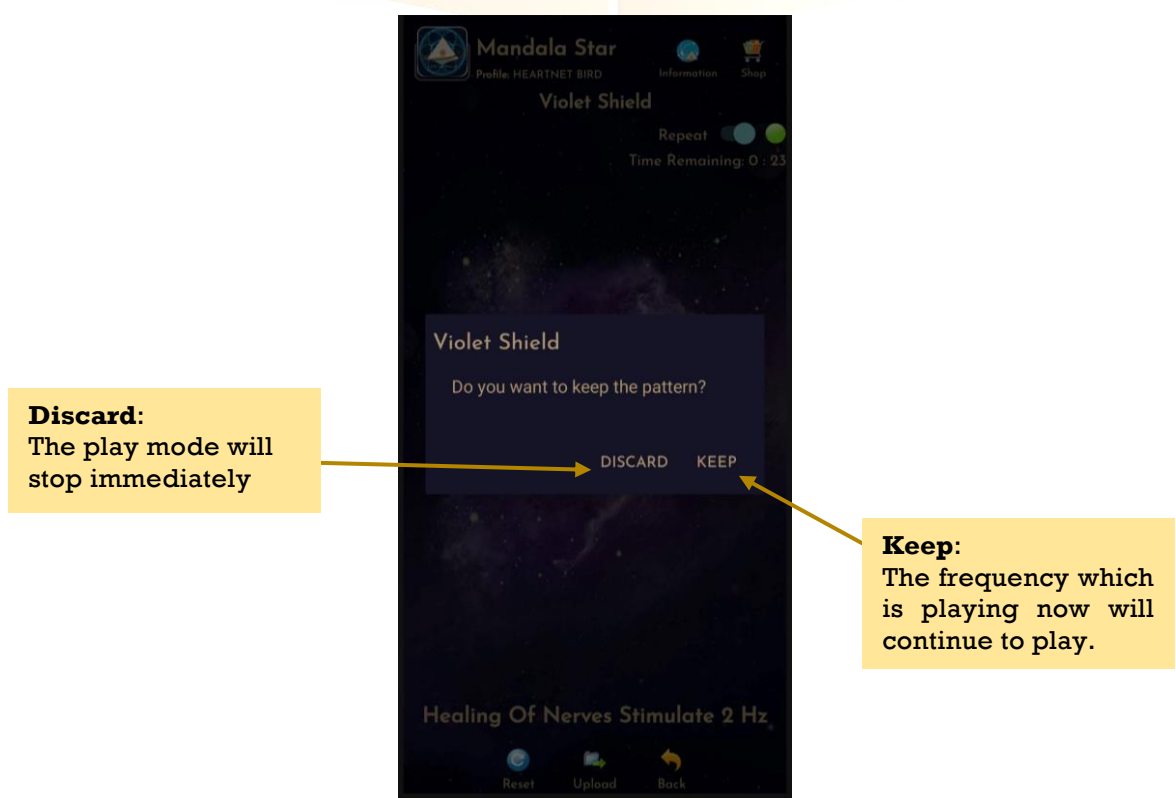
Tap **Delete Preset** to remove unwanted preset.



Tick **Repeat** to repeat playlist/Looping

Upload – Upload playlist to device.

User can tap **Back** to go back to previous page if wish to recreate the playlist.

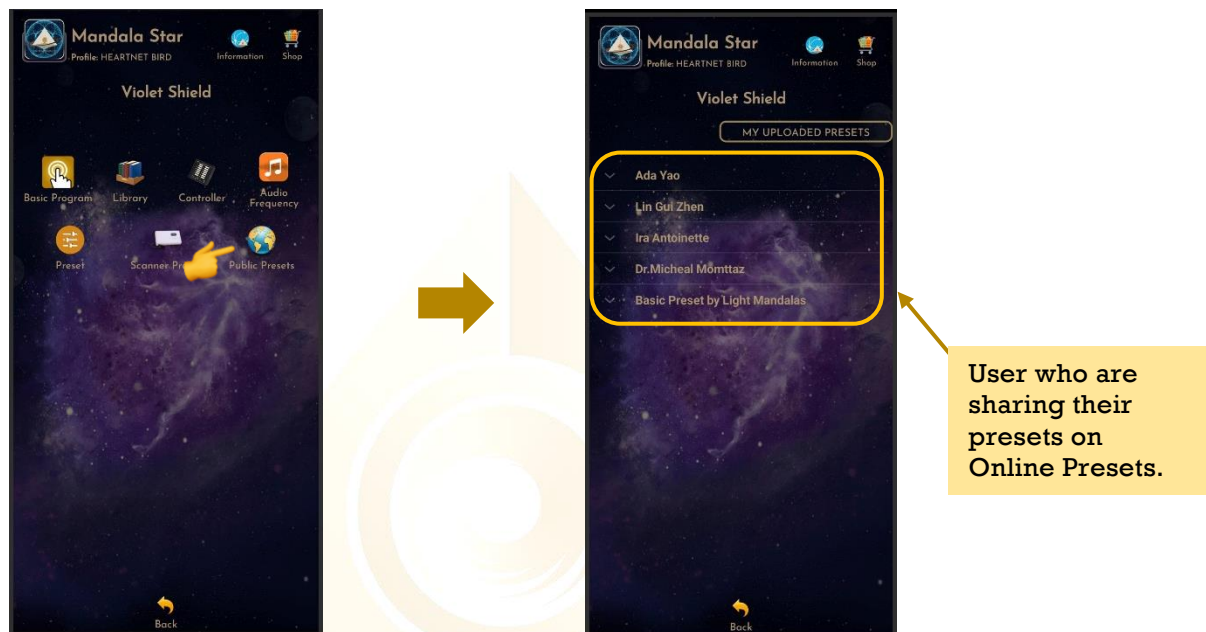


Discard:
The play mode will stop immediately

Keep:
The frequency which is playing now will continue to play.

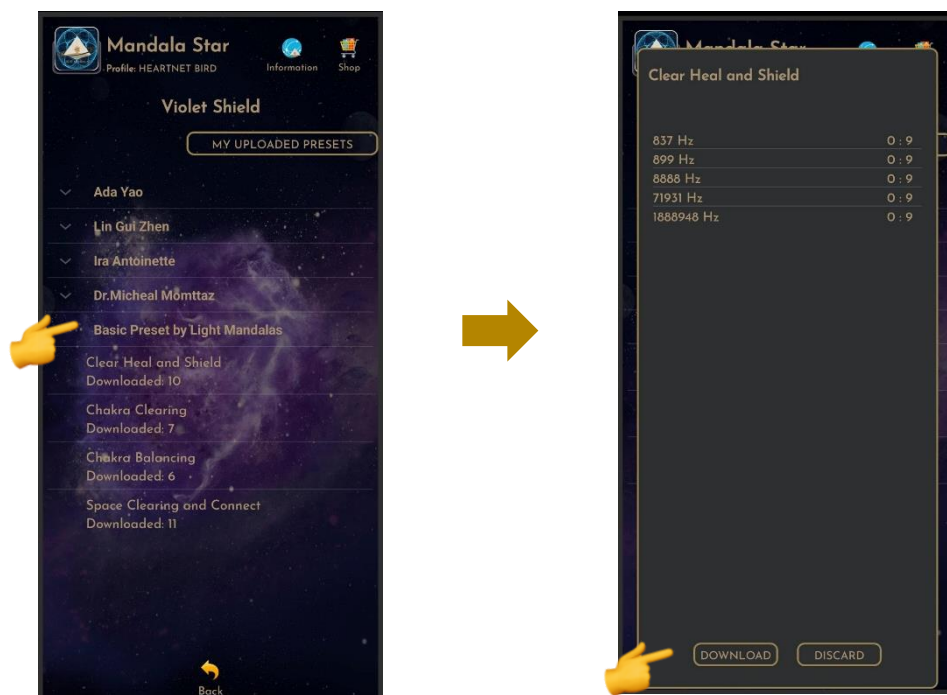
6.3 Public Presets

User can download presets shared by other users in **Public Presets**. User can also upload their preset online and share with other Light Mandalas users.



i. Download Preset

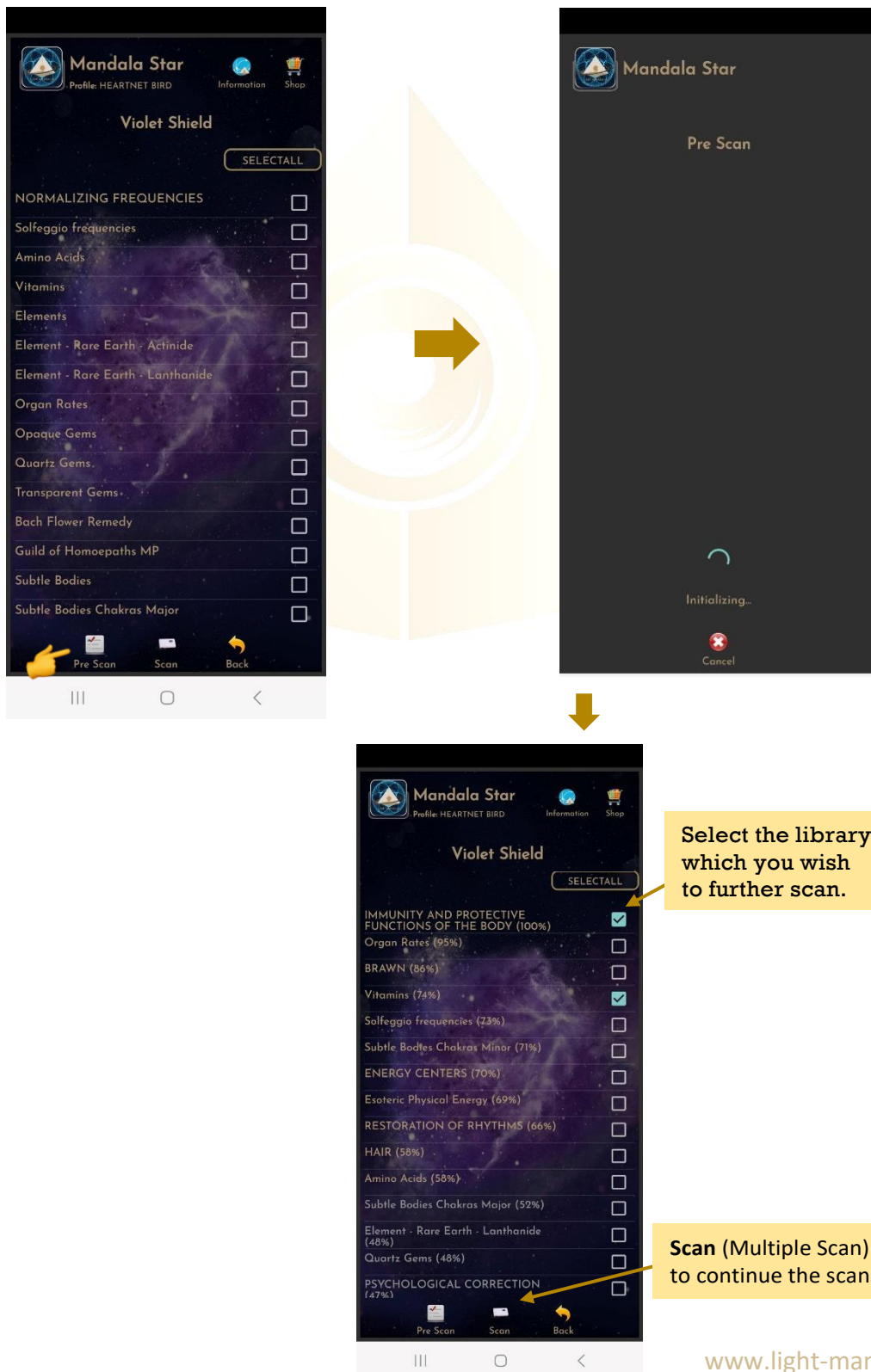
To download the online preset, tap on the user's name to see what presets they are sharing and then tap on the preset you want to download for more information and choose **Download**.



6.4 Scanner Function

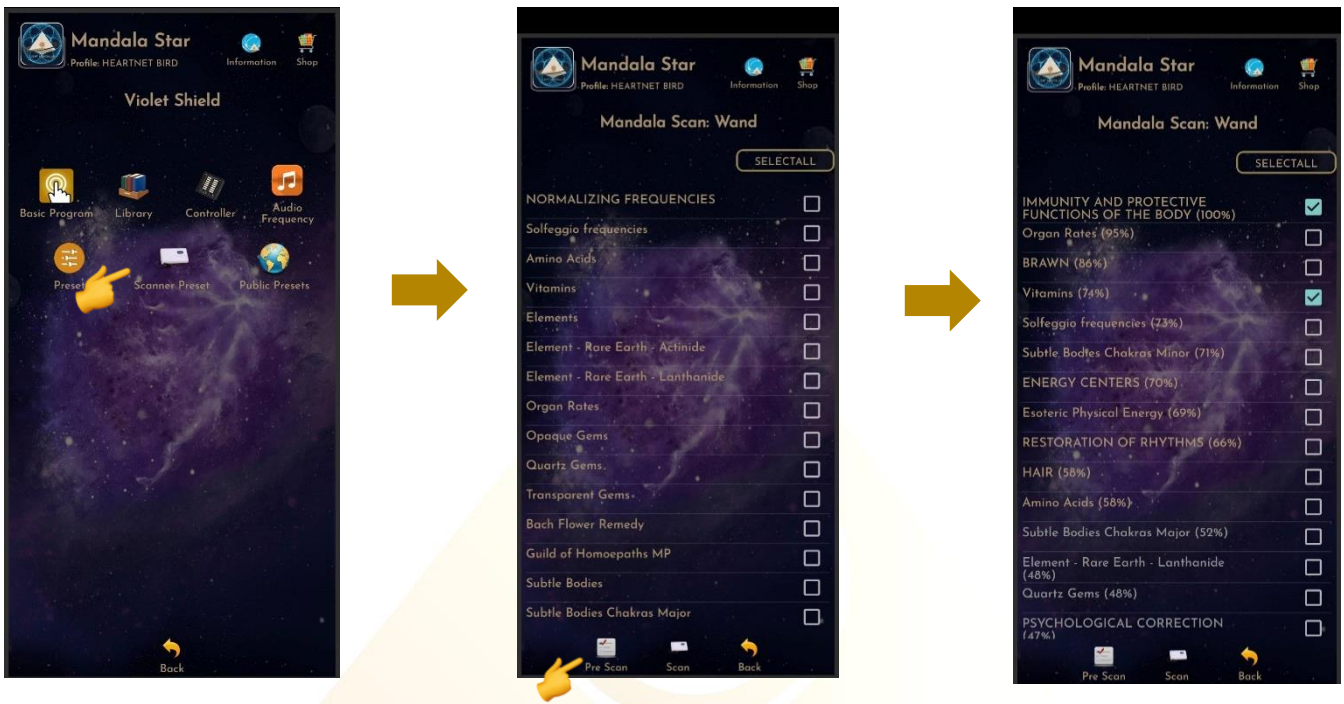
i. Pre Scan

This function will help user to choose the **priority/significant libraries** by user body coherence, then user can select the significant libraries from the scan results to continue the further scan.



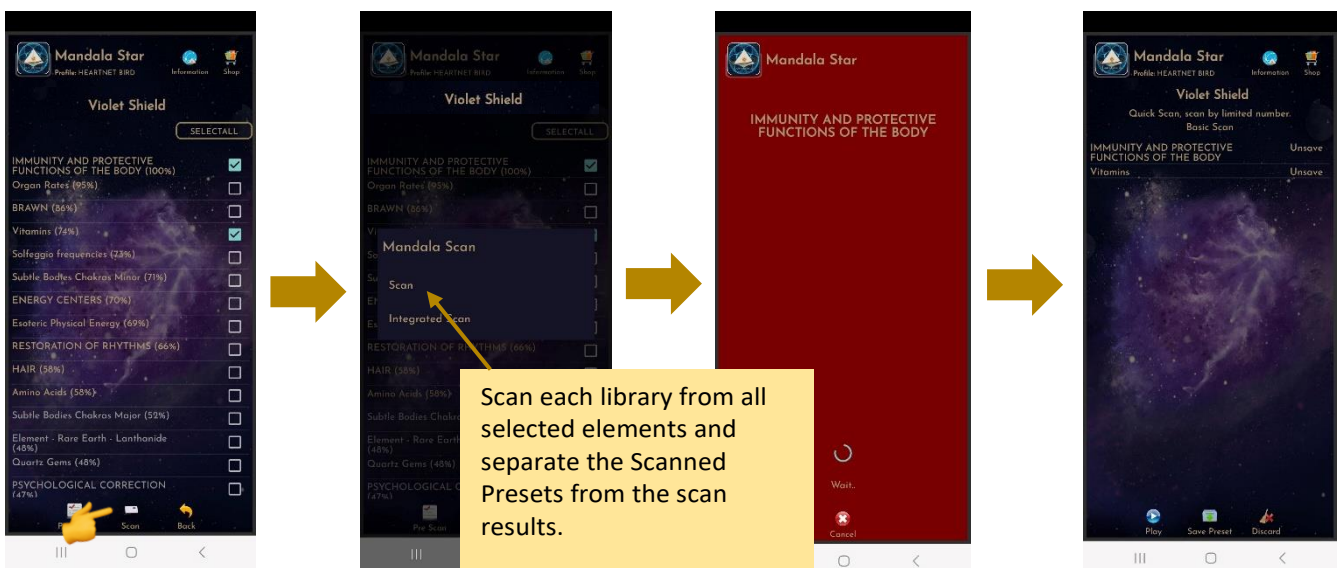
ii. Scan

User can tap on Scan icon on the Pre-Scan Results to continue the further scan or directly tap on Scan icon on the Mandala Astral Star Home Page to manually select specific library to scan.

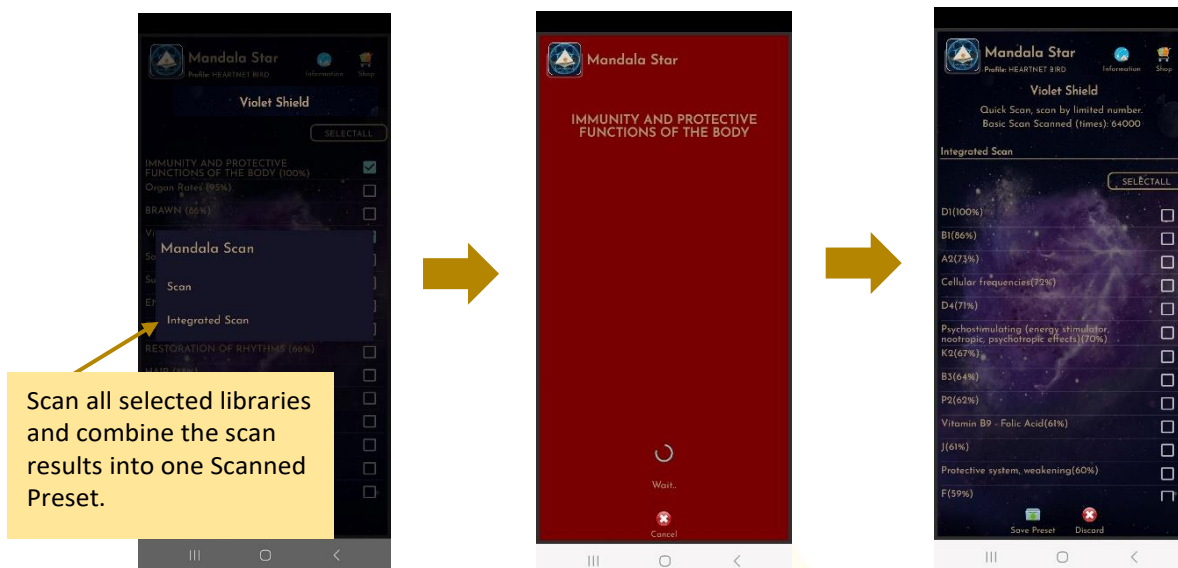


Select all library or specific library to Scan.

*** Remember to pair Mandala Dynamic Scan with tablet prior to use this function.**

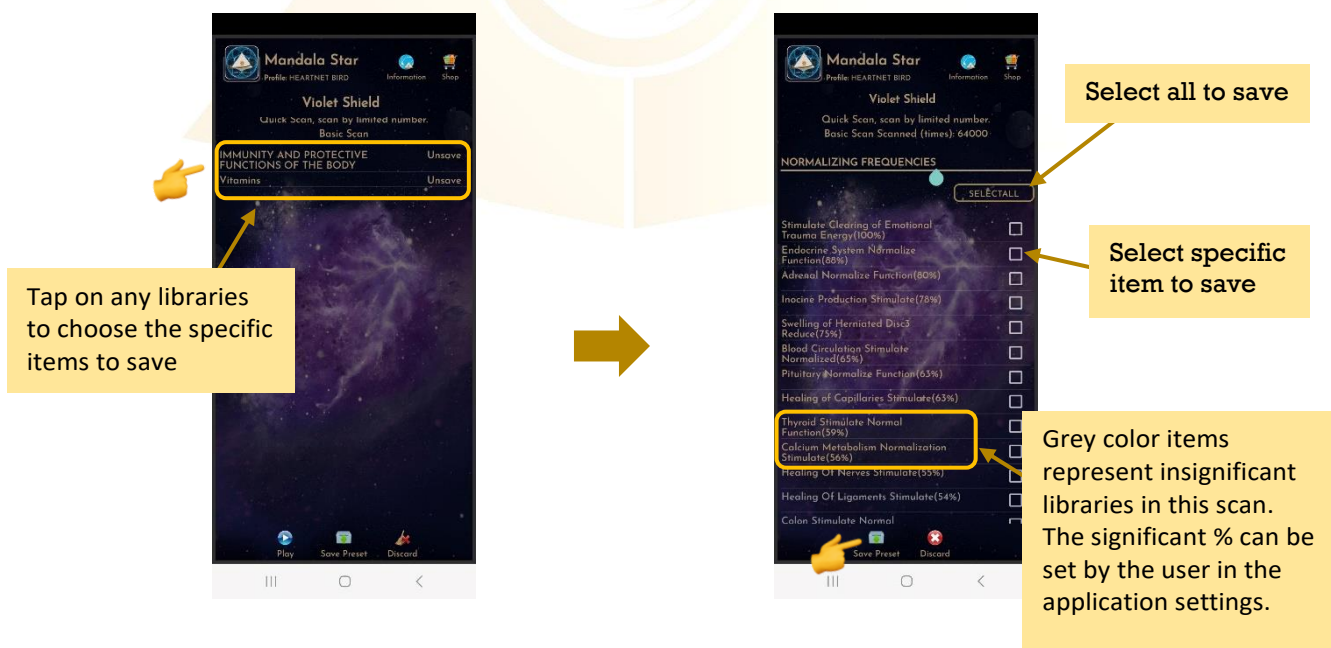


Scan each library from all selected elements and separate the Scanned Presets from the scan results.



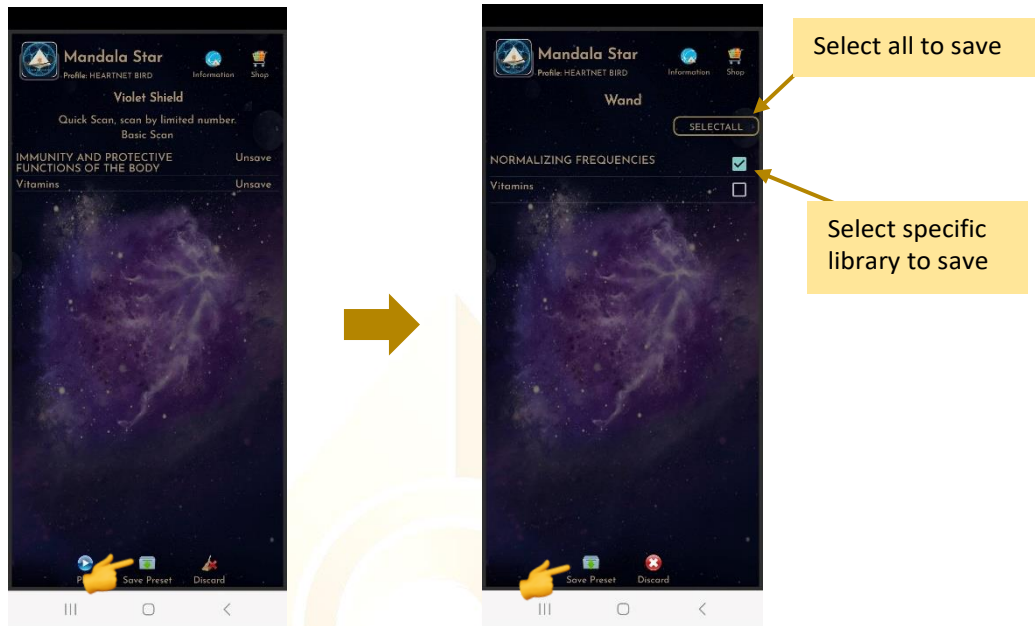
Create Scanned Preset from Multiple Scan Result:
The scan results will show after the scan is completed.

1. Choose specific preset in the library to save:



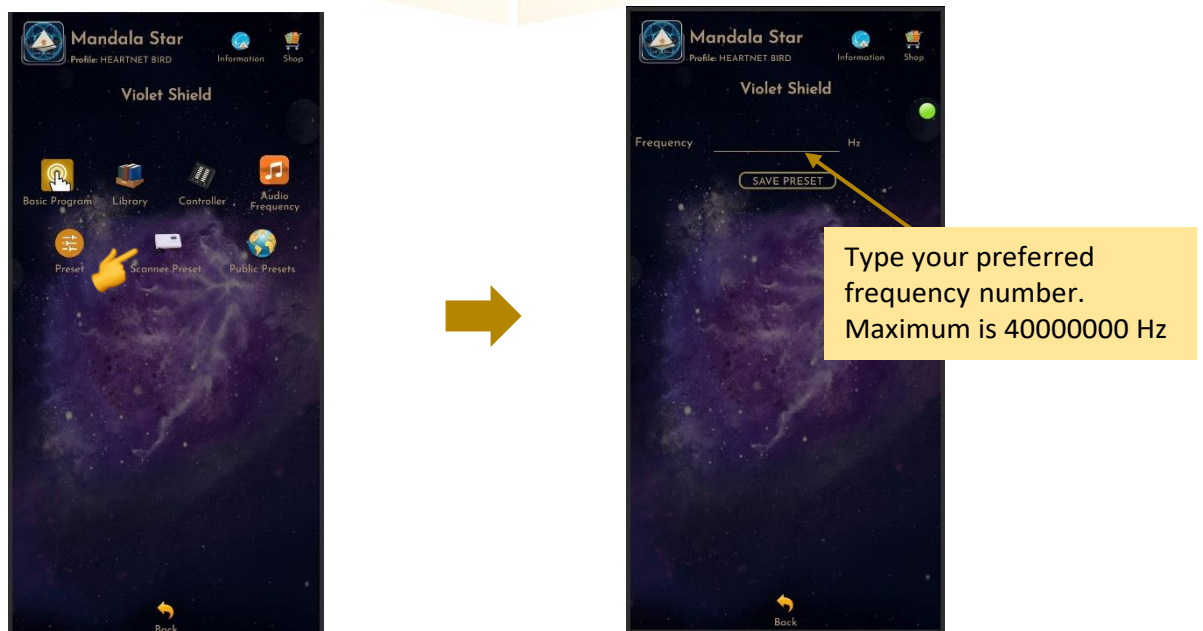
2. Choose specific libraries to save:

In this save method, all frequency/items in each library chosen will be saved including insignificant items (grey color items).

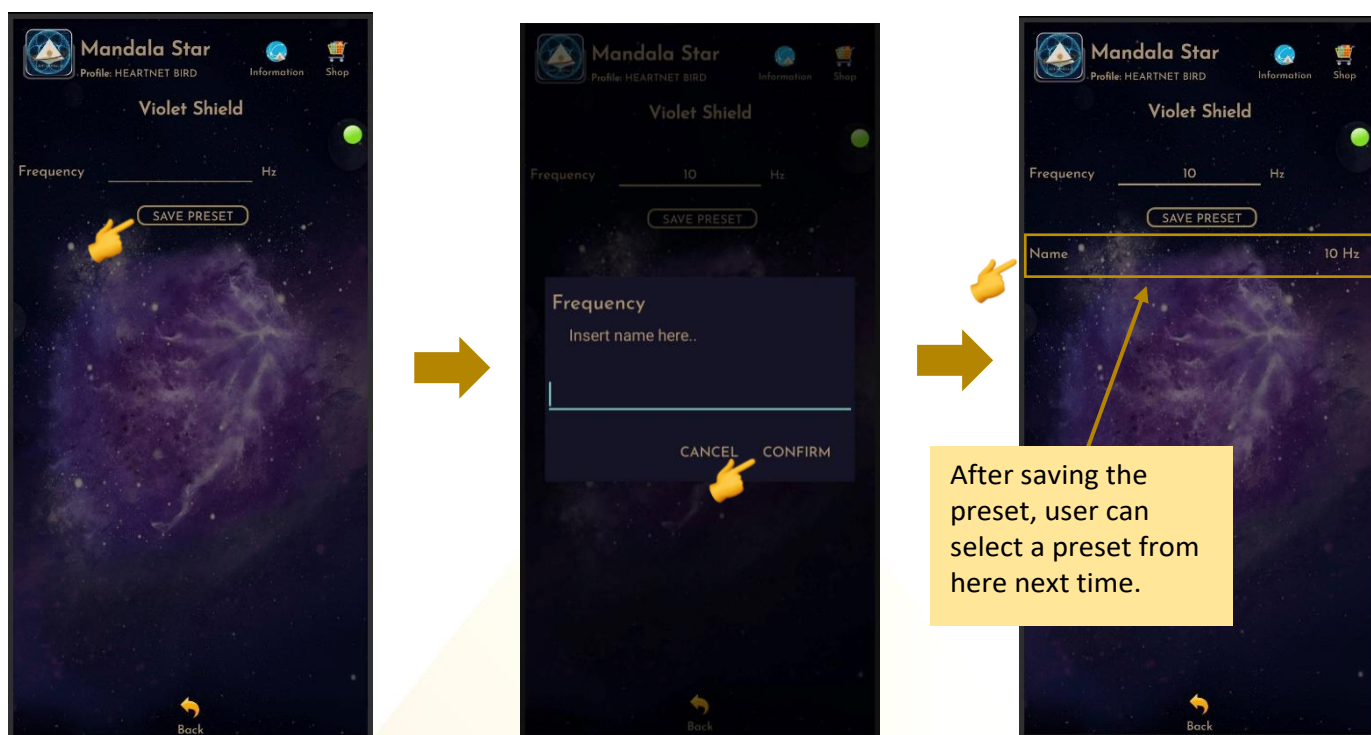


6.5 Controller

Users can choose the frequency by yourself by tapping on **Controller**.



Users can type the frequency number and click **“SAVE PRESET”** to insert user’s name then tap on **“Confirm”**



6.6 Audio Mode

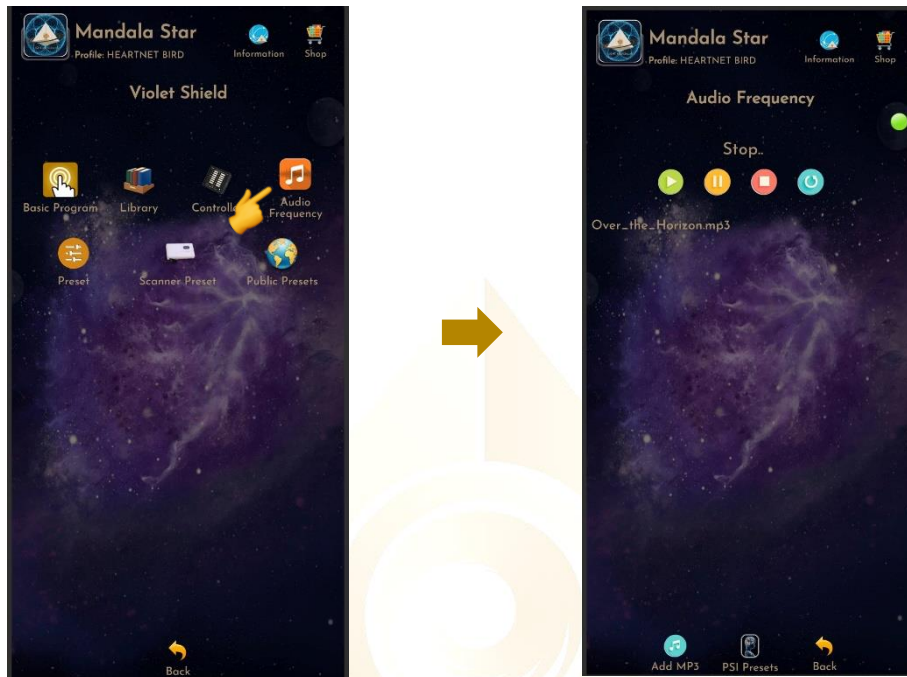
In this mode, users can **Add** and **Play Music** from the tablet. Users can enjoy both **Violet Laser** and **Music Therapy** at the same time. The lasers will pulse according to the music playing.

To do this, please make sure Mandala Violet Shield is turned to **Bluetooth Audio Mode** and **headset is plugged into Mandala Violet Shield**.

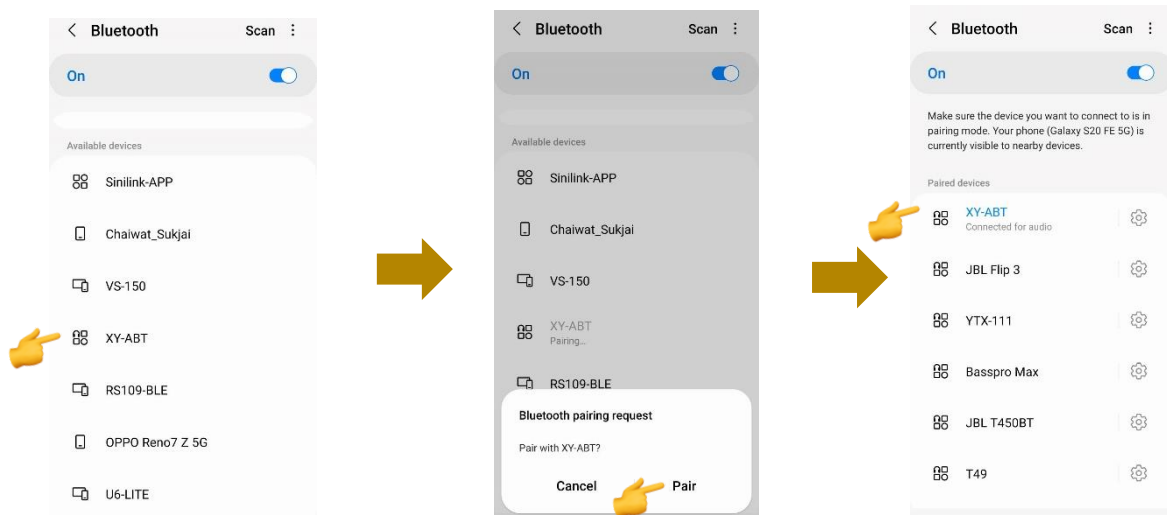


Then follow the following steps:

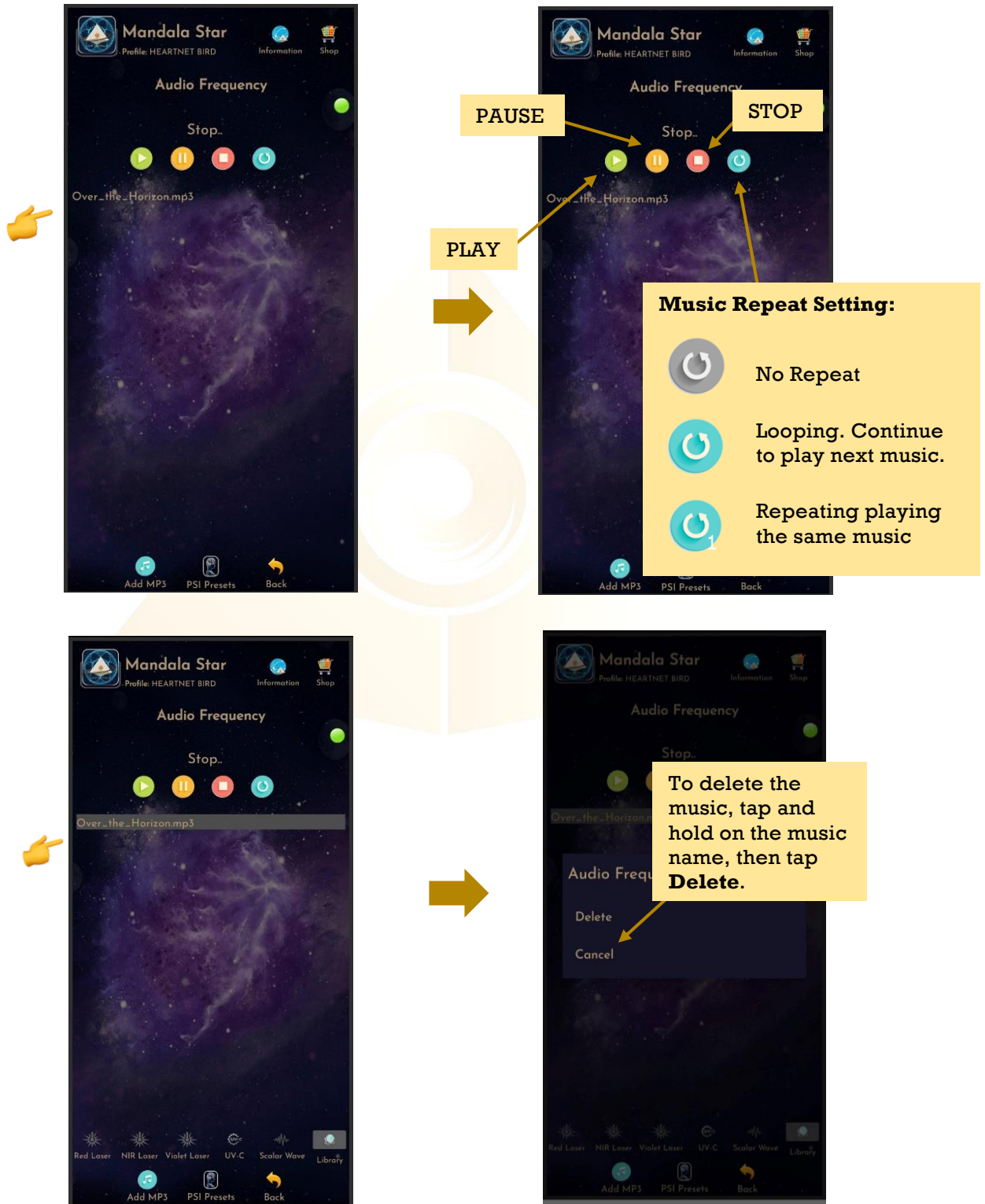
1. Go to **Mandala Violet Shield** main page, and tap on **Audio Frequency**



2. Go to **android phone setting**, turn **ON Bluetooth** and tap on **scan** to scan for the **headset name**. When the headset name **“XY-ABT”** appears, tap on it, and then select **PAIR** to pair it. ** User only need to pair the headset name for the first-time use of headset. The headset name will then be saved in the paired devices list.*



3. Go back to **Mandala Star app – Mandala Violet Shield main page**, tap on **Audio Frequency**, then tap on **Enter**. To add music you wish to play, tap on **Add**, then tap on the music name to **Play** it.



When the music is played, the user can go to Preset Library to play preset or a specific frequency form the library. Now, the lasers and scalar wave should pulse according to the music playing.

Disclaimer

All content found on the Light-mandalas.com Website, Facebook Page, YouTube, including: text, images, video, audio, or other formats are intended for informational, educational and research purposes only and neither Light Mandalas Co. Ltd. nor the publishers of this content take responsibility for possible health consequences of any person or persons reading or following the information in this educational content and is not intended to be a substitute for professional medical advice, diagnosis, treatment or cure. Always seek the advice of your physician or other qualified health professionals with any questions you may have regarding a medical condition.

“No claims other than stress detection and stress reduction may be made”

Light Mandalas products are to be used as a Heart Rate Variability Biofeedback system and Light, Color and Sound therapy, designed for stress detection and stress reduction only. The devices do not evaluate any issue other than stress. Stress can come from many sources; this system uses light and color and sound therapies to reduce stress. Remember, there has never been any reported side effects using light, color and sound therapy anywhere in the world and throughout time.

Notes on the practices of low-level laser therapy (LLLT) and Biofeedback

Low-level laser therapy (LLLT) is considered investigational by the FDA, and no medical claims of cures are permitted in the US; at this time however, low-level lasers are defined within the scope of complimentary medical practices such as physiotherapy, aesthetic, Traditional Chinese Medicine and acupuncture, etc.

The FDA does not regulate Bio resonance tools but they do regulate biofeedback tools and some Bio resonance tools are registered under this category.

*It is a legal requirement at this time that the user does not make any medical claims of diagnosis or cure.

Precaution

Light Mandalas products are working on energetic level. The standard benefit is energy clearance. During the process, your body and mind can be uncomfortable. The symptoms associated with overly rapid clearance of toxins. If those detox symptoms are too strong, you may need to stop using the products. You have to allow the clearance or detox to proceed and you can start to try the products afterwards. However, if the issues still remain the same, it may need to be completely discontinued for your own safety

***Although UVC is considered the safest of the UV wavelengths please do not place stationary on the bare skin for extended period of time (more than 1 minute) and avoid looking directly into the light source.**

Shall there be any inquiry, please contact us for further support.

Light Mandalas Co., Ltd. (Thailand Headquarters):

- **Light Mandalas Website:** www.light-mandalas.com
- **Official:** info@light-mandalas.com
- **Instagram:** @mandalawave9
- **YouTube Channel:** Light Mandalas Official
- **Technical Support Email:** cservice@light-mandalas.com

Local agents contacts:

- **Japan:** japan@light-mandalas.com
- **Taiwan:** lovelight777888@gmail.com
- **Indonesia:** lightseed2020bali@gmail.com
- **West Malaysia:** lightworker@healingtech.org
- **East Malaysia:** malaysia@light-mandalas.com
- **Hungary:** horesnyibela@light-mandalas.com
- **Switzerland, Germany, Austria, and the Netherlands:** info@light-mandalas.ch
- **France, Spain:** france-spain@light-mandalas.com
- **USA:** usa@light-mandalas.com
- **New Zealand, Australia:** tachyonhealing.nz@gmail.com